



PERFORMANCE REPORT 2020 - 2024

CAPACITY

November 2021



making the difference

Contents

Description & Analysis	3
FABEC TRAFFIC DEVELOPMENT (en-route)	4
FABEC TRAFFIC DEVELOPMENT (arrival)	6
KPI #1: En-route ATFM delay per controlled flight (FABEC)	8
KPI #2: Arrival ATFM delay per controlled flight (FABEC)	9
KPI #1: En-route ATFM delay per reason code (FABEC)	10
KPI #1: En-route ATFM delay per controlled flight (ANSP)	11
KPI #1: En-route ATFM delay per controlled flight (ACC)	12
KPI #2: Arrival ATFM delay per reason code (FABEC)	13
KPI #2: Arrival ATFM delay per controlled flight (ANSP)	14
Glossary	15

Description & Analysis

Europe

Traffic in November was at 77.2% of November 2019 levels. In November, the network traffic was aligned with the baseline of the latest EUROCONTROL traffic scenarios published on 15 October 2021. On average, the network saw 20,679 flights/day. The peak day was 05 November (23,857 flights) with traffic at 81.5% of 2019 levels. Fridays were the busiest days throughout the month with an average of 22,916 flights/day.

Traffic increased slightly from September and was aligned with the baseline of the latest EUROCONTROL traffic scenarios published on 15 October 2021. Air traffic throughout Europe was 22.8% down in November 2021 compared to November 2019. Three market segments continued to post sustained growth in November 2021 (vs. November 2019) and they were charter (+25.4%), business aviation (+22.3%) boosted by the COP26 climate conference in the UK and all-cargo (+10.7%). The traditional scheduled and low-cost segments increased with the winter schedules, reaching -32.5% and -27.2% respectively in November 2021 compared to November 2019.

The busiest airport was Amsterdam/Schiphol (990 flights/day) followed by Frankfurt/Main (963 flights/day), Paris/Charles de Gaulle (934 flights/day) and IGA Istanbul (906 flights/day).

Ryanair was by far the busiest operator with, on average, 2,095 movements per day, followed by Turkish Airlines (1,021), Lufthansa (924) and easyJet (767). DHL, Wideroe, Netjets, Loganair, Volotea and JET2.COM had increased traffic in November compared to November 2019. Ryanair group was the busiest aircraft operator group with a total of 62,841 flights, which was an increase of 2.8% compared to 2019. Compared to October 2021, Ryanair group total flights decreased from 72,089 flights to 62,741 flights (-12.8%), Air France/KLM decreased by 7.7%, IAG group decreased by 7.9%, Lufthansa group decreased by 13.6% and easyJet decreased by 29.9%.

There was a total of 191,507 minutes of ATFM delay in November. The flow measures were mainly at IGA Istanbul airport, Istanbul/Sabiha Gökçen airport and in Paris ACC. En-route delays accounted for 34.9% these ATFM delays and airports for 65.2%. Network departure punctuality remained stable at around 79% and there was a marginal increase in arrival punctuality around 83%. With fewer airspace constraints, the network excess fuel burn indicator remained low compared to 2019.

(Source: NM).

Delays from the passengers' point of view

For November 2021, the Central Office for Delay Analysis (CODA) reported that the average delay per flight on departure was 9.1 minutes per flight - an increase of 4.2 minutes per flight compared to November 2020. 13% of the total delay can be attributable to air traffic control. Airlines caused 54% of the total delay, resulting from such issues as technical problems, staff shortages or turnaround times that are too tightly scheduled. Airports caused 7% of the delays while the rest (IATA Code 85,86,71-79,97-99) of around 27% can be allocated to other reasons (Source: CODA Dashboard-11-2021, Date 17/01/2022)

FABEC

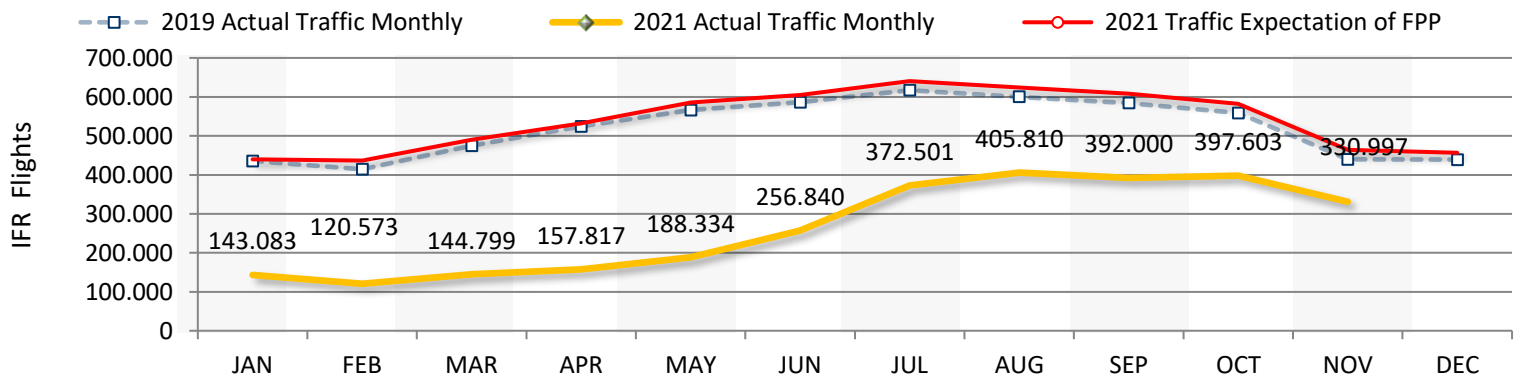
In the FABEC area, traffic decreased by 24.7% in November 2021 compared to the same month in 2019, leading to a 49.8% traffic decrease YTD. Traffic was down in a similar way in all ANSPs, from -27.9% in DFS, -24.2% in MUAC to -20.5% in skeyes or -20.0% in DSNA. Airport traffic was down to a similar extent (-26.3% in the FABEC area) but with more disparities between ANSPs. Landings decreased by 32.4% in DFS, 29.9% in skyguide, but "only" 22.0% in skeyes or 20.0% in DSNA.

In November 2021, Paris ACC (13 205 min) and Reims ACC (6 089 min) were the units to generate some en-route ATFM delays. In Paris, delays were due to 'Staffing' (84%), 'ATC-Capacity' (12%), 'Aerodrome Capacity' (2%), 'Equipment' (1%) and 'Weather' (1%). In Reims, delays were due to 'Staffing' (66%), 'ATC-Capacity' (28%) and 'Weather' (6%).

Airport ATFM delays were mainly generated in Nice-Côte d'Azur/LFMN (6 878 min), Berlin-Brandenburg/EDDB (6 557 min), Paris Charles de Gaulle/LFPG (4 986 min). In Nice Côte d'Azur, delays were due to 'Aerodrome Disruptions (ATC)' (83%), 'Staffing' (11%) and 'Aerodrome Capacity' (6%). In Berlin-Brandenburg, delays were due to 'Aerodrome Capacity' (99%) and 'Weather' (1%); in Paris Charles de Gaulle, 'Weather' (94%) and 'Aerodrome Disruptions (ATC)' (6%).

FABEC TRAFFIC DEVELOPMENT (*en-route*)

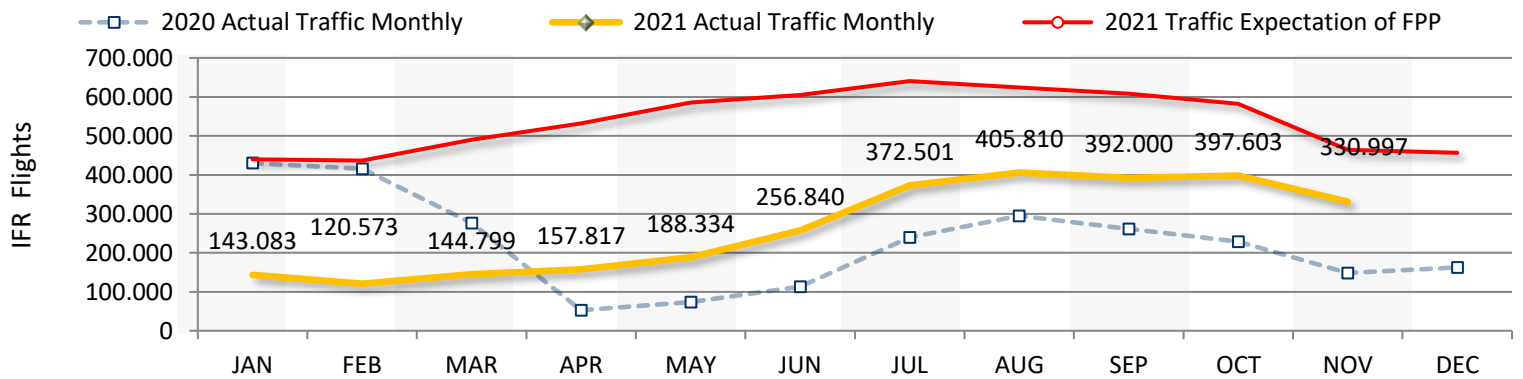
FABEC	JAN	FEB	MAR	APR	MAY	JUN	JUL	AUG	SEP	OCT	NOV	DEC	YTD
2019 Actual Traffic Monthly	435.809	414.272	474.729	524.490	566.051	586.281	617.104	600.261	584.310	558.973	439.854	438.590	5.802.134
2021 Actual Traffic Monthly	143.083	120.573	144.799	157.817	188.334	256.840	372.501	405.810	392.000	397.603	330.997		2.910.357
Growth (%)	-67,2 %	-70,9 %	-69,5 %	-69,9 %	-66,7 %	-56,2 %	-39,6 %	-32,4 %	-32,9 %	-28,9 %	-24,7 %		-49,8 %
2021 Traffic Expectation of FPP	440.186	436.609	490.117	531.721	585.472	604.612	640.569	624.188	608.495	582.617	463.715	456.759	6.465.057
2021 Traffic Evolution (%)	-67,5 %	-72,4 %	-70,5 %	-70,3 %	-67,8 %	-57,5 %	-41,8 %	-35,0 %	-35,6 %	-31,8 %	-28,6 %		
2021 Traffic Cumulated (%)	-67,5 %	-69,9 %	-70,1 %	-70,2 %	-69,6 %	-67,3 %	-62,9 %	-58,9 %	-56,0 %	-53,5 %	-51,6 %		



	JAN	FEB	MAR	APR	MAY	JUN	JUL	AUG	SEP	OCT	NOV	DEC	YTD
skeyes													
2019 Actual Traffic Monthly	46.085	42.458	49.539	53.761	57.702	58.513	62.239	59.274	59.410	57.544	46.709	46.631	593.234
2021 Actual Traffic Monthly	16.463	14.094	16.118	17.943	21.059	28.862	39.735	41.471	41.821	42.447	37.123		317.136
Growth (%)	-64,3 %	-66,8 %	-67,5 %	-66,6 %	-63,5 %	-50,7 %	-36,2 %	-30,0 %	-29,6 %	-26,2 %	-20,5 %		-46,5 %
DFS													
2019 Actual Traffic Monthly	222.009	211.766	240.686	258.289	282.291	286.199	299.444	292.210	291.681	284.915	225.050	223.636	2.894.540
2021 Actual Traffic Monthly	69.223	58.987	73.586	82.028	92.241	121.837	173.210	188.953	188.222	196.416	162.314		1.407.017
Growth (%)	-68,8 %	-72,1 %	-69,4 %	-68,2 %	-67,3 %	-57,4 %	-42,2 %	-35,3 %	-35,5 %	-31,1 %	-27,9 %		-51,4 %
DSNA													
2019 Actual Traffic Monthly	221.573	209.836	244.322	283.032	302.429	321.951	340.265	329.402	313.806	292.190	221.663	221.576	3.080.469
2021 Actual Traffic Monthly	74.364	60.927	71.495	78.739	101.198	144.886	217.301	233.949	219.460	218.318	177.239		1.597.876
Growth (%)	-66,4 %	-71,0 %	-70,7 %	-72,2 %	-66,5 %	-55,0 %	-36,1 %	-29,0 %	-30,1 %	-25,3 %	-20,0 %		-48,1 %
LVNL													
2019 Actual Traffic Monthly	46.111	44.366	50.512	53.470	57.492	55.907	57.593	57.195	56.974	57.181	47.564	47.298	584.365
2021 Actual Traffic Monthly	17.808	13.733	16.695	18.430	21.043	25.726	37.108	40.138	39.398	40.584	36.287		306.950
Growth (%)	-61,4 %	-69,0 %	-66,9 %	-65,5 %	-63,4 %	-54,0 %	-35,6 %	-29,8 %	-30,8 %	-29,0 %	-23,7 %		-47,5 %
MUAC													
2019 Actual Traffic Monthly	138.773	129.324	147.712	154.875	164.086	166.793	176.133	173.200	168.761	166.082	137.728	139.287	1.723.467
2021 Actual Traffic Monthly	44.474	34.373	41.453	46.276	52.330	69.124	98.093	109.221	110.820	117.451	104.364		827.979
Growth (%)	-68,0 %	-73,4 %	-71,9 %	-70,1 %	-68,1 %	-58,6 %	-44,3 %	-36,9 %	-34,3 %	-29,3 %	-24,2 %		-52,0 %
skyguide													
2019 Actual Traffic Monthly	89.334	86.268	99.645	110.651	120.991	127.214	133.394	127.821	124.023	115.533	86.141	89.466	1.221.015
2021 Actual Traffic Monthly	26.405	22.687	28.012	32.619	39.721	54.940	83.886	91.102	86.948	87.464	67.552		621.336
Growth (%)	-70,4 %	-73,7 %	-71,9 %	-70,5 %	-67,2 %	-56,8 %	-37,1 %	-28,7 %	-29,9 %	-24,3 %	-21,6 %		-49,1 %

FABEC TRAFFIC DEVELOPMENT (*en-route*)

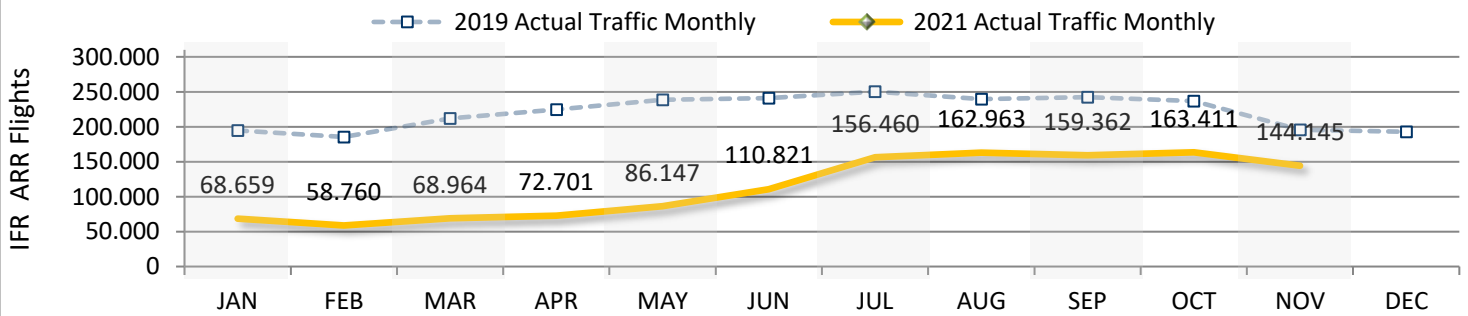
FABEC	JAN	FEB	MAR	APR	MAY	JUN	JUL	AUG	SEP	OCT	NOV	DEC	YTD
2020 Actual Traffic Monthly	430.110	415.561	276.631	52.526	73.371	113.300	239.693	294.852	261.378	228.453	147.896	162.450	2.533.771
2021 Actual Traffic Monthly	143.083	120.573	144.799	157.817	188.334	256.840	372.501	405.810	392.000	397.603	330.997		2.910.357
Growth (%)	-66,7 %	-71,0 %	-47,7 %	200,5 %	156,7 %	126,7 %	55,4 %	37,6 %	50,0 %	74,0 %	123,8 %		14,9 %
2021 Traffic Expectation of FPP	440.186	436.609	490.117	531.721	585.472	604.612	640.569	624.188	608.495	582.617	463.715	456.759	6.465.057
2021 Traffic Evolution (%)	-67,5 %	-72,4 %	-70,5 %	-70,3 %	-67,8 %	-57,5 %	-41,8 %	-35,0 %	-35,6 %	-31,8 %	-28,6 %		
2021 Traffic Cumulated (%)	-67,5 %	-69,9 %	-70,1 %	-70,2 %	-69,6 %	-67,3 %	-62,9 %	-58,9 %	-56,0 %	-53,5 %	-51,6 %		



	JAN	FEB	MAR	APR	MAY	JUN	JUL	AUG	SEP	OCT	NOV	DEC	YTD
skeyes													
2020 Actual Traffic Monthly	44.865	43.754	30.860	7.531	9.492	13.158	26.573	29.137	25.192	22.506	17.536	19.339	270.604
2021 Actual Traffic Monthly	16.463	14.094	16.118	17.943	21.059	28.862	39.735	41.471	41.821	42.447	37.123		317.136
Growth (%)	-63,3 %	-67,8 %	-47,8 %	138,3 %	121,9 %	119,3 %	49,5 %	42,3 %	66,0 %	88,6 %	111,7 %		17,2 %
DFS													
2020 Actual Traffic Monthly	218.493	209.352	141.583	32.194	42.441	60.990	115.966	139.327	132.000	118.171	77.513	79.398	1.288.030
2021 Actual Traffic Monthly	69.223	58.987	73.586	82.028	92.241	121.837	173.210	188.953	188.222	196.416	162.314		1.407.017
Growth (%)	-68,3 %	-71,8 %	-48,0 %	154,8 %	117,3 %	99,8 %	49,4 %	35,6 %	42,6 %	66,2 %	109,4 %		9,2 %
DSNA													
2020 Actual Traffic Monthly	217.787	213.859	140.091	19.006	27.568	49.864	131.897	166.442	134.236	111.919	69.265	83.459	1.281.934
2021 Actual Traffic Monthly	74.364	60.927	71.495	78.739	101.198	144.886	217.301	233.949	219.460	218.318	177.239		1.597.876
Growth (%)	-65,9 %	-71,5 %	-49,0 %	314,3 %	267,1 %	190,6 %	64,8 %	40,6 %	63,5 %	95,1 %	155,9 %		24,6 %
LVNL													
2020 Actual Traffic Monthly	46.552	44.046	32.102	6.404	9.188	12.648	22.853	30.023	28.650	25.096	19.150	19.934	276.712
2021 Actual Traffic Monthly	17.808	13.733	16.695	18.430	21.043	25.726	37.108	40.138	39.398	40.584	36.287		306.950
Growth (%)	-61,7 %	-68,8 %	-48,0 %	187,8 %	129,0 %	103,4 %	62,4 %	33,7 %	37,5 %	61,7 %	89,5 %		10,9 %
MUAC													
2020 Actual Traffic Monthly	133.754	127.979	91.834	18.524	24.874	32.882	65.762	86.306	79.956	71.184	47.963	51.870	781.018
2021 Actual Traffic Monthly	44.474	34.373	41.453	46.276	52.330	69.124	98.093	109.221	110.820	117.451	104.364		827.979
Growth (%)	-66,7 %	-73,1 %	-54,9 %	149,8 %	110,4 %	110,2 %	49,2 %	26,6 %	38,6 %	65,0 %	117,6 %		6,0 %
skyguide													
2020 Actual Traffic Monthly	90.405	88.622	52.617	8.004	11.569	20.805	50.662	62.083	51.333	43.305	25.675	30.073	505.080
2021 Actual Traffic Monthly	26.405	22.687	28.012	32.619	39.721	54.940	83.886	91.102	86.948	87.464	67.552		621.336
Growth (%)	-70,8 %	-74,4 %	-46,8 %	307,5 %	243,3 %	164,1 %	65,6 %	46,7 %	69,4 %	102,0 %	163,1 %		23,0 %

FABEC TRAFFIC DEVELOPMENT (*arrival*)

FABEC	JAN	FEB	MAR	APR	MAY	JUN	JUL	AUG	SEP	OCT	NOV	DEC	YTD
2019 Actual Traffic Monthly	194.850	185.420	211.796	224.471	238.490	240.788	250.186	239.483	242.195	236.830	195.678	192.743	2.460.187
2021 Actual Traffic Monthly	68.659	58.760	68.964	72.701	86.147	110.821	156.460	162.963	159.362	163.411	144.145		1.252.393
Growth (%)	-64,8 %	-68,3 %	-67,4 %	-67,6 %	-63,9 %	-54,0 %	-37,5 %	-32,0 %	-34,2 %	-31,0 %	-26,3 %		-49,1 %



	JAN	FEB	MAR	APR	MAY	JUN	JUL	AUG	SEP	OCT	NOV	DEC	YTD
ANA LUX													
2019 Actual Traffic Monthly	2.728	2.640	3.007	3.285	3.451	3.420	3.410	3.160	3.445	3.466	3.150	3.022	35.162
2021 Actual Traffic Monthly	1.307	1.097	1.270	1.451	1.677	1.957	2.362	2.447	2.603	2.694	2.449		21.314
Growth (%)	-52,1 %	-58,4 %	-57,8 %	-55,8 %	-51,4 %	-42,8 %	-30,7 %	-22,6 %	-24,4 %	-22,3 %	-22,3 %		-39,4 %

	JAN	FEB	MAR	APR	MAY	JUN	JUL	AUG	SEP	OCT	NOV	DEC	YTD
skeyes													
2019 Actual Traffic Monthly	9.804	8.825	10.293	11.083	11.763	11.678	12.607	12.086	12.016	11.632	10.315	9.981	122.102
2021 Actual Traffic Monthly	4.154	3.655	4.074	4.379	5.095	6.322	8.419	8.799	8.622	8.480	8.042		70.041
Growth (%)	-57,6 %	-58,6 %	-60,4 %	-60,5 %	-56,7 %	-45,9 %	-33,2 %	-27,2 %	-28,2 %	-27,1 %	-22,0 %		-42,6 %

	JAN	FEB	MAR	APR	MAY	JUN	JUL	AUG	SEP	OCT	NOV	DEC	YTD
DFS													
2019 Actual Traffic Monthly	78.274	75.894	85.673	88.848	96.254	95.027	98.049	95.422	98.321	97.898	79.529	76.266	989.189
2021 Actual Traffic Monthly	20.815	18.158	23.398	25.886	28.960	36.973	52.200	55.684	57.467	61.619	53.725		434.885
Growth (%)	-73,4 %	-76,1 %	-72,7 %	-70,9 %	-69,9 %	-61,1 %	-46,8 %	-41,6 %	-41,6 %	-37,1 %	-32,4 %		-56,0 %

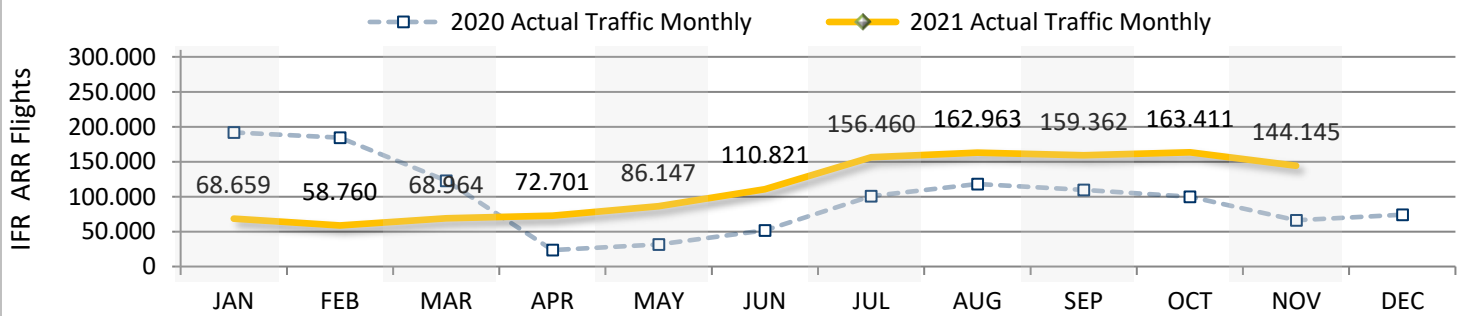
	JAN	FEB	MAR	APR	MAY	JUN	JUL	AUG	SEP	OCT	NOV	DEC	YTD
DSNA													
2019 Actual Traffic Monthly	66.766	63.317	73.401	81.023	84.477	88.656	92.799	86.055	86.206	81.851	67.332	66.631	871.883
2021 Actual Traffic Monthly	30.058	26.603	29.318	28.379	35.836	47.349	65.705	66.191	61.823	60.497	53.878		505.637
Growth (%)	-55,0 %	-58,0 %	-60,1 %	-65,0 %	-57,6 %	-46,6 %	-29,2 %	-23,1 %	-28,3 %	-26,1 %	-20,0 %		-42,0 %

	JAN	FEB	MAR	APR	MAY	JUN	JUL	AUG	SEP	OCT	NOV	DEC	YTD
LVNL													
2019 Actual Traffic Monthly	18.998	18.021	20.363	21.455	22.973	22.330	22.933	23.046	22.639	22.777	19.390	19.628	234.925
2021 Actual Traffic Monthly	7.583	5.531	6.437	7.215	8.290	10.212	15.217	16.532	15.854	16.496	14.858		124.225
Growth (%)	-60,1 %	-69,3 %	-68,4 %	-66,4 %	-63,9 %	-54,3 %	-33,6 %	-28,3 %	-30,0 %	-27,6 %	-23,4 %		-47,1 %

	JAN	FEB	MAR	APR	MAY	JUN	JUL	AUG	SEP	OCT	NOV	DEC	YTD
skyguide													
2019 Actual Traffic Monthly	18.280	16.723	19.059	18.777	19.572	19.677	20.388	19.714	19.568	19.206	15.962	17.215	206.926
2021 Actual Traffic Monthly	4.742	3.716	4.467	5.391	6.289	8.008	12.557	13.310	12.993	13.625	11.193		96.291
Growth (%)	-74,1 %	-77,8 %	-76,6 %	-71,3 %	-67,9 %	-59,3 %	-38,4 %	-32,5 %	-33,6 %	-29,1 %	-29,9 %		-53,5 %

FABEC TRAFFIC DEVELOPMENT (*arrival*)

FABEC	JAN	FEB	MAR	APR	MAY	JUN	JUL	AUG	SEP	OCT	NOV	DEC	YTD
2020 Actual Traffic Monthly	191.890	184.251	122.668	23.552	31.760	51.750	100.748	117.893	109.808	99.745	66.007	74.203	1.100.072
2021 Actual Traffic Monthly	68.659	58.760	68.964	72.701	86.147	110.821	156.460	162.963	159.362	163.411	144.145		1.252.393
Growth (%)	-64,2 %	-68,1 %	-43,8 %	208,7 %	171,2 %	114,1 %	55,3 %	38,2 %	45,1 %	63,8 %	118,4 %		13,8 %



	JAN	FEB	MAR	APR	MAY	JUN	JUL	AUG	SEP	OCT	NOV	DEC	YTD
ANA LUX													
2020 Actual Traffic Monthly	2.881	2.739	1.943	563	694	1.112	1.856	1.881	1.808	1.778	1.456	1.476	18.711
2021 Actual Traffic Monthly	1.307	1.097	1.270	1.451	1.677	1.957	2.362	2.447	2.603	2.694	2.449		21.314
Growth (%)	-54,6 %	-59,9 %	-34,6 %	157,7 %	141,6 %	76,0 %	27,3 %	30,1 %	44,0 %	51,5 %	68,2 %		13,9 %

	skeyes												YTD
2020 Actual Traffic Monthly	9.672	9.405	6.820	2.284	2.770	3.248	5.434	5.647	4.944	4.860	4.195	4.738	59.279
2021 Actual Traffic Monthly	4.154	3.655	4.074	4.379	5.095	6.322	8.419	8.799	8.622	8.480	8.042		70.041
Growth (%)	-57,1 %	-61,1 %	-40,3 %	91,7 %	83,9 %	94,6 %	54,9 %	55,8 %	74,4 %	74,5 %	91,7 %		18,2 %

	DFS												YTD
2020 Actual Traffic Monthly	75.120	72.932	48.729	10.990	13.307	19.202	34.829	39.685	39.172	36.662	24.273	23.968	414.901
2021 Actual Traffic Monthly	20.815	18.158	23.398	25.886	28.960	36.973	52.200	55.684	57.467	61.619	53.725		434.885
Growth (%)	-72,3 %	-75,1 %	-52,0 %	135,5 %	117,6 %	92,5 %	49,9 %	40,3 %	46,7 %	68,1 %	121,3 %		4,8 %

	DSNA												YTD
2020 Actual Traffic Monthly	67.407	64.707	41.888	6.207	9.979	20.145	42.434	49.570	44.825	39.774	24.103	30.323	411.039
2021 Actual Traffic Monthly	30.058	26.603	29.318	28.379	35.836	47.349	65.705	66.191	61.823	60.497	53.878		505.637
Growth (%)	-55,4 %	-58,9 %	-30,0 %	357,2 %	259,1 %	135,0 %	54,8 %	33,5 %	37,9 %	52,1 %	123,5 %		23,0 %

	LVNL												YTD
2020 Actual Traffic Monthly	19.188	17.938	12.953	2.274	3.146	4.383	8.362	12.014	11.506	10.112	7.696	8.300	109.572
2021 Actual Traffic Monthly	7.583	5.531	6.437	7.215	8.290	10.212	15.217	16.532	15.854	16.496	14.858		124.225
Growth (%)	-60,5 %	-69,2 %	-50,3 %	217,3 %	163,5 %	133,0 %	82,0 %	37,6 %	37,8 %	63,1 %	93,1 %		13,4 %

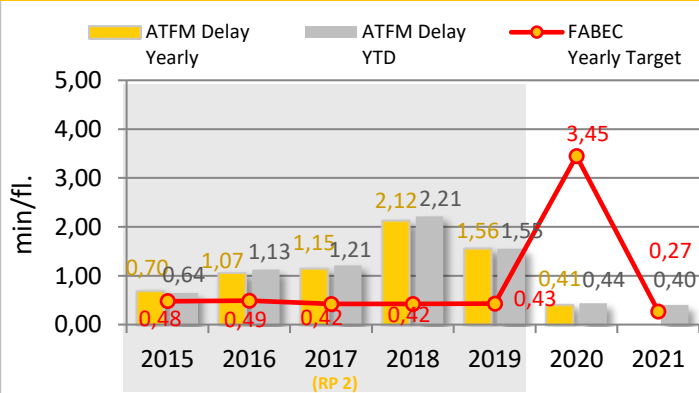
	skyguide												YTD
2020 Actual Traffic Monthly	17.622	16.530	10.335	1.234	1.864	3.660	7.833	9.096	7.553	6.559	4.284	5.398	86.570
2021 Actual Traffic Monthly	4.742	3.716	4.467	5.391	6.289	8.008	12.557	13.310	12.993	13.625	11.193		96.291
Growth (%)	-73,1 %	-77,5 %	-56,8 %	336,9 %	237,4 %	118,8 %	60,3 %	46,3 %	72,0 %	107,7 %	161,3 %		11,2 %

KPI #1: En-route ATFM delay per controlled flight (FABEC)

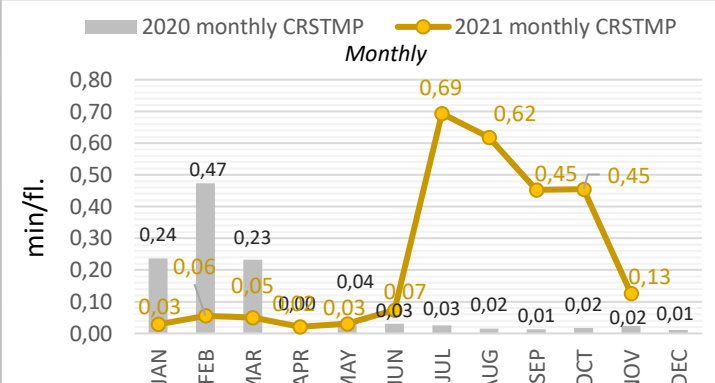
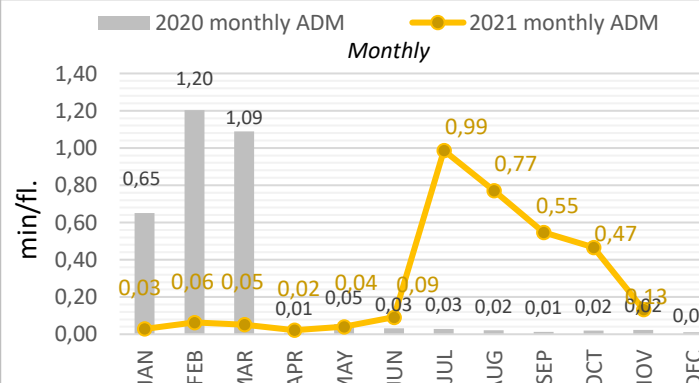
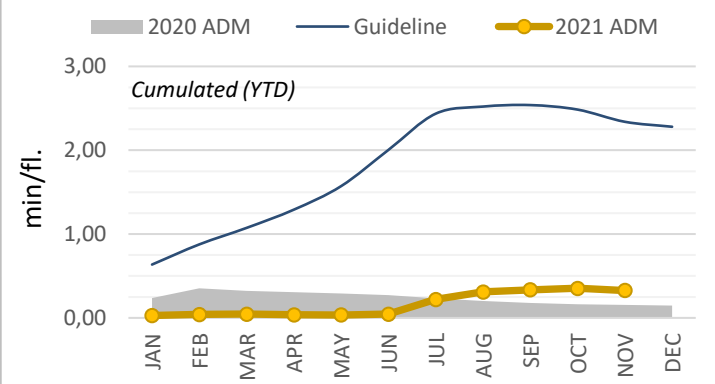
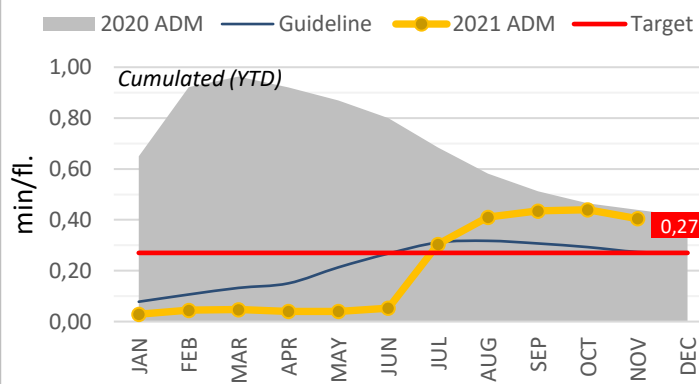
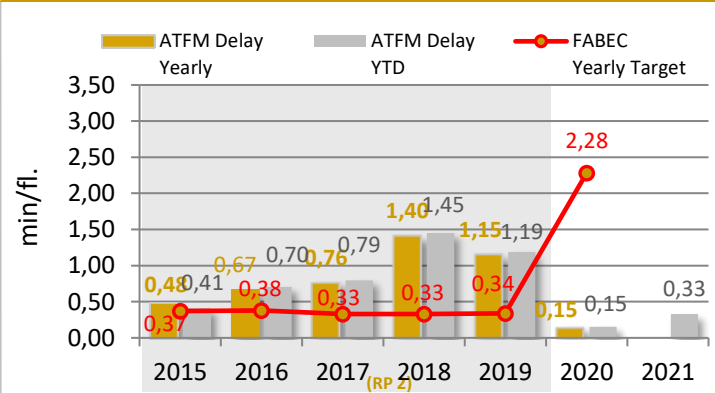
	YTD 2021	YTD 2020	YTD 2021	YTD 2020
En-route Delay All causes	0,40	0,44	En-route Delay CRSTMP causes	0,33
FABEC Target (yearly value)	0,27		FABEC Target (yearly value)	n.a.
Guideline	0,27		Guideline	2,34
Minute ('000) ALL causes	1.178	1.113	Minute ('000) CRSTMP causes	955
Diff. 2021 - 2020	+ 5,9 %		Diff. 2021 - 2020	+ 145 %
Traffic ('000)	2.910	2.534	<i>Potential savings (*) due to underbid the delay Target</i>	
Diff. 2021 - 2020	+ 14,9 %		<i>(all Causes) in Mio EURO (YTD)</i> ▶ + 0,01	

* Cost of ATFM-delay per min = 87 €

All Delay Causes



CRSTMP Delay Causes



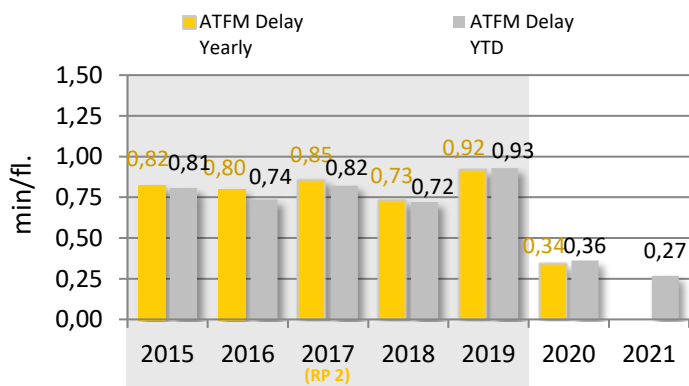
The guideline for the en-route ATFM delay per movement is a basic cumulative extrapolation of the previous three years monthly allocation and is designed to give an impression, how the YTD figures should be, in order to reach the yearly 2021 published targets (3,88 min per flight for all delay causes and 2,56 min per flight for the delay causes CRSTMP). It should be noted that the FPP is still being coordinated and it is therefore very likely that the target value will be adjusted.

KPI #2: Arrival ATFM delay per controlled flight (FABEC)

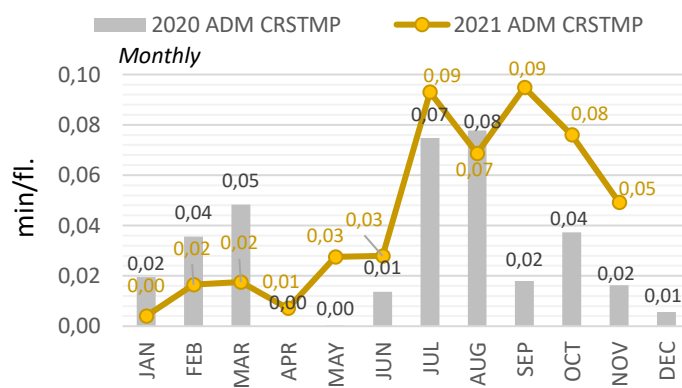
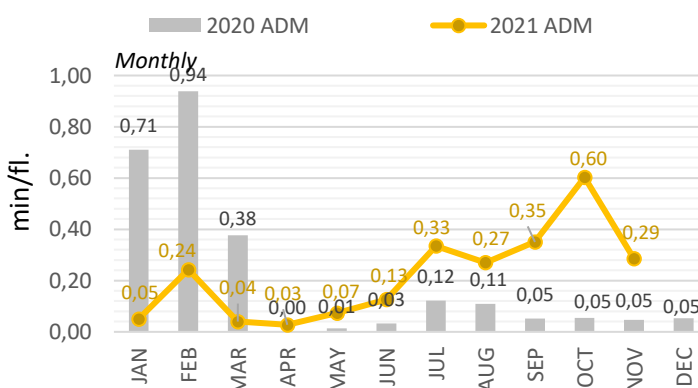
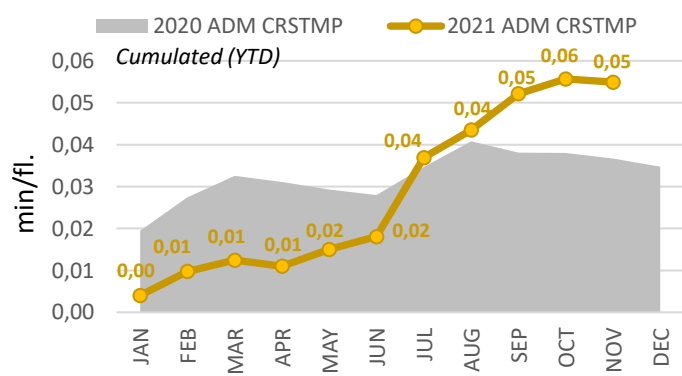
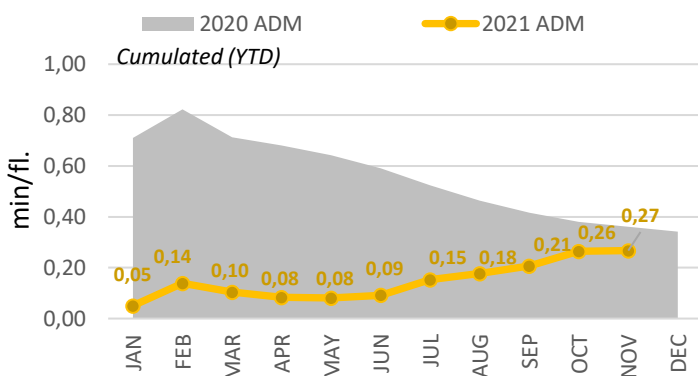
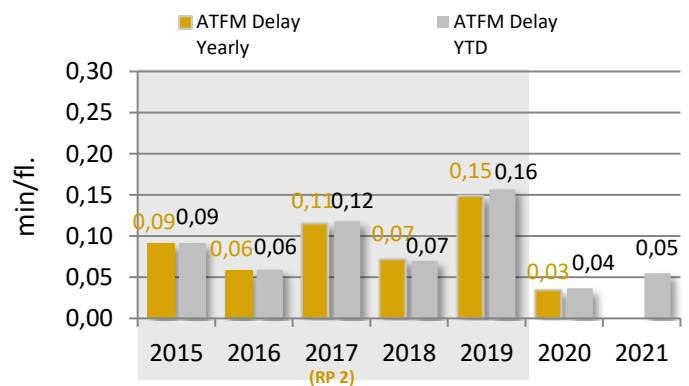
	YTD 2021	YTD 2020
Arrival Delay All causes	0,27	0,36
Diff. 2021 - 2020	- 26 %	
Minute ('000) ALL causes	335	397
Diff. 2021 - 2020	- 16 %	
Traffic ('000)	1.252	1.100
Diff. 2021 - 2020	+ 13,8 %	

	YTD 2021	YTD 2020
Arrival Delay CRSTMP causes	0,05	0,04
Diff. 2021 - 2020	+ 50 %	
Minute ('000) CRSTMP causes	69	40
Diff. 2021 - 2020	+ 70 %	

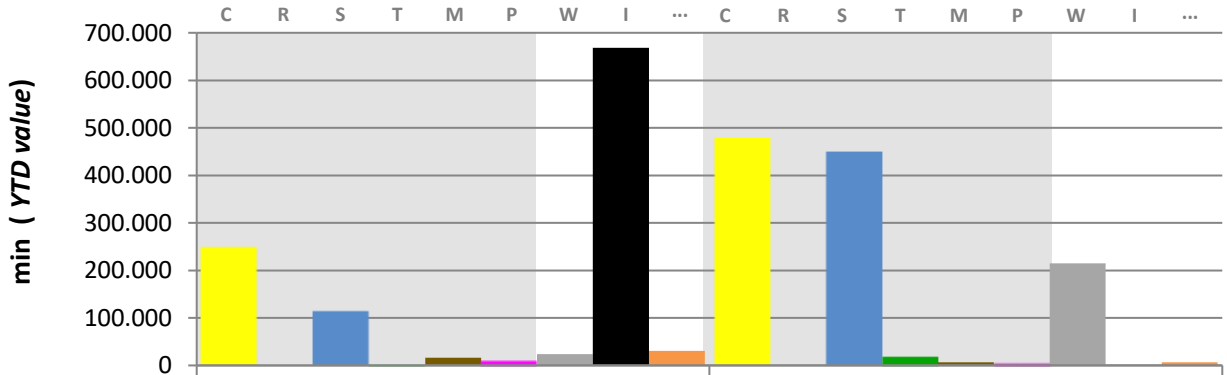
All Delay Causes



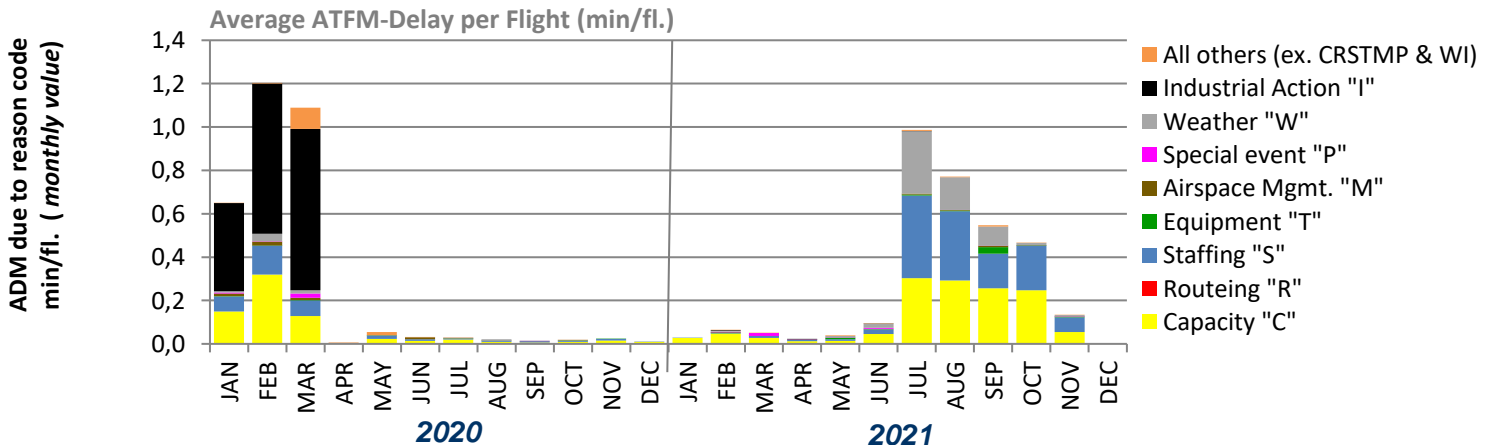
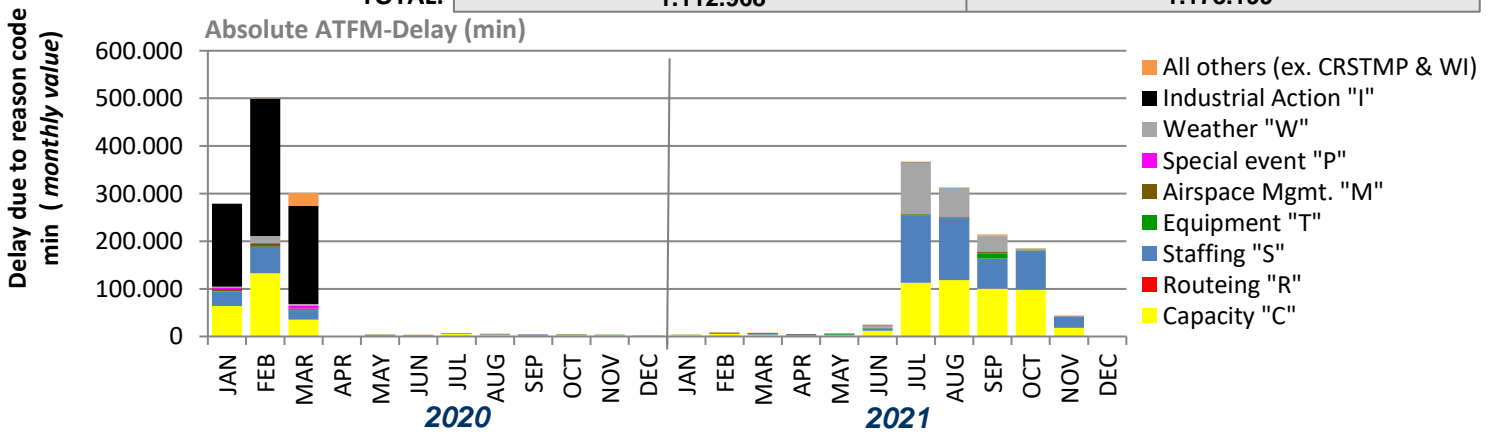
CRSTMP Delay Causes



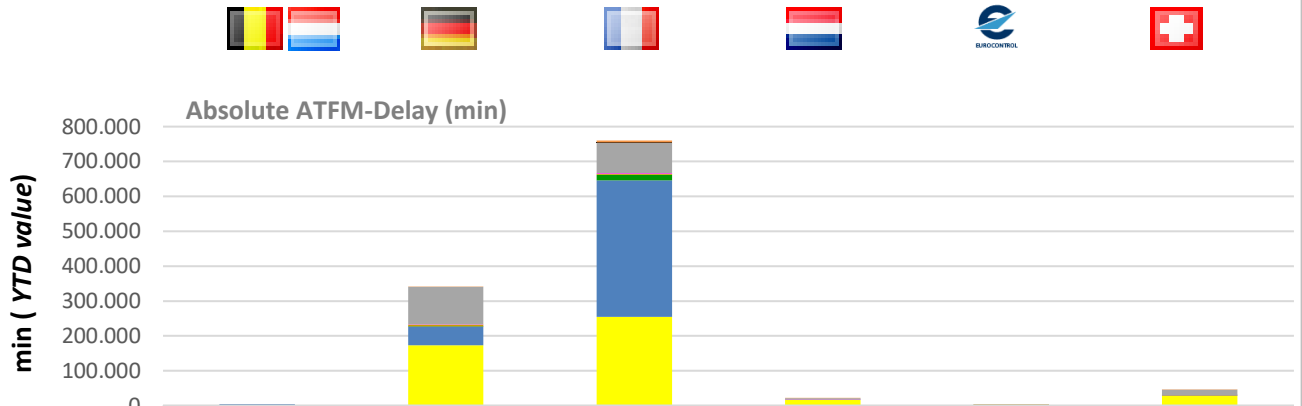
KPI #1: En-route ATFM delay per reason code (FABEC)



Delay due to reason code:	2020	2021
Capacity "C"	249.477	477.650
Routeing "R"	0	0
Staffing "S"	114.416	449.272
Equipment "T"	2.321	17.578
Airspace Mgmt. "M"	15.963	6.713
Special event "P"	8.199	3.870
Weather "W"	23.595	214.910
Industrial Action "I"	668.510	1.274
All others (ex. CRSTMP & WI)	30.487	6.932
CRSTMP:	390.376	955.083
TOTAL:	1.112.968	1.178.199



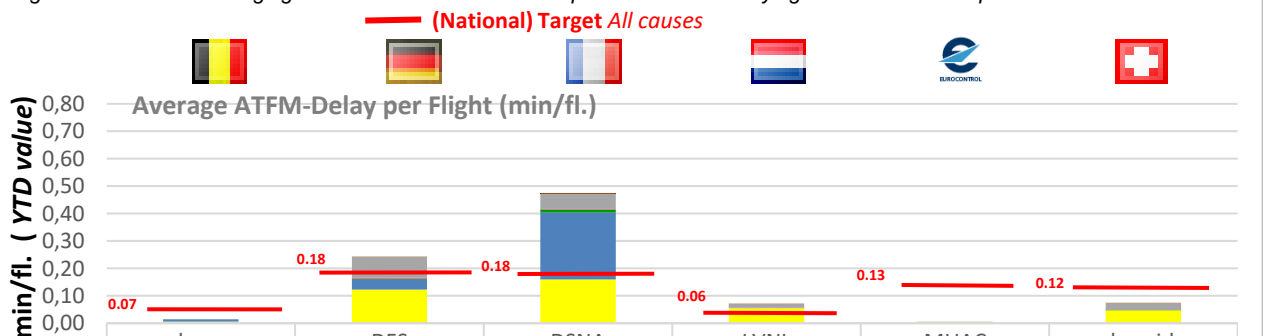
KPI #1: En-route ATFM delay per controlled flight (ANSP)



	skeyes	DFS	DSNA	LVNL	MUAC	skyguide
All others (ex. CRSTMP & WI)		520	5.603	319	257	233
Industrial Action "I"			1.274			
Weather "W"		107.988	87.019	4.405	179	15.319
Special event "P"		1.435	2.182	189		64
Airspace Mgmt. "M"		4.184	2.059		470	
Equipment "T"		221	16.123		781	453
Staffing "S"	2.315	54.358	391.317	580	642	60
Routeing "R"						
Capacity "C"	2.067	173.073	254.736	16.750	1.208	29.816

CRSTMP:	4.382	233.271	666.417	17.519	3.101	30.393
TOTAL:	4.382	341.779	760.313	22.243	3.537	45.945

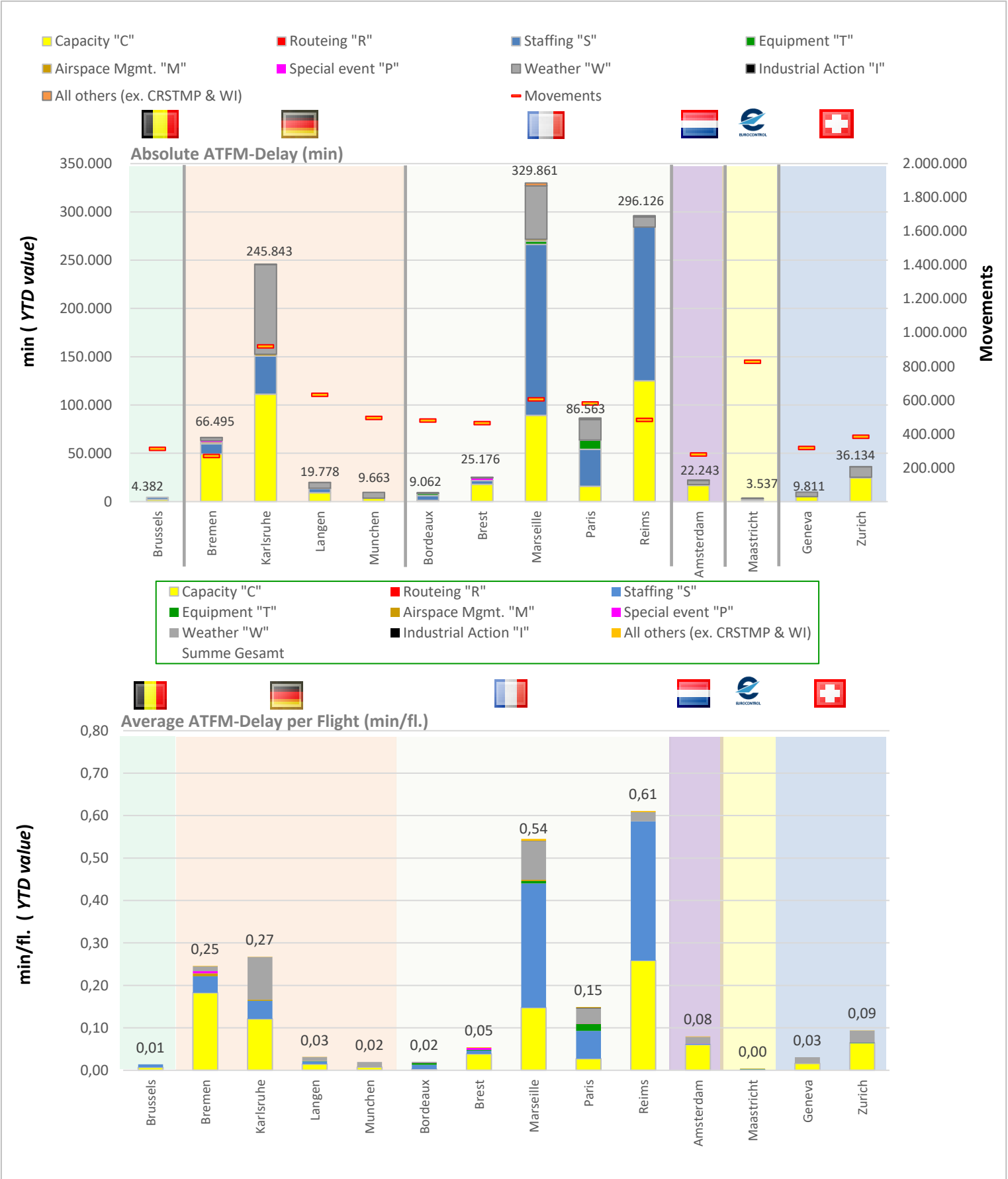
*Belgium and Luxembourg are in a common charging zone and FIR. There is no separate en-route delay figure and incentives/penalties are shared.



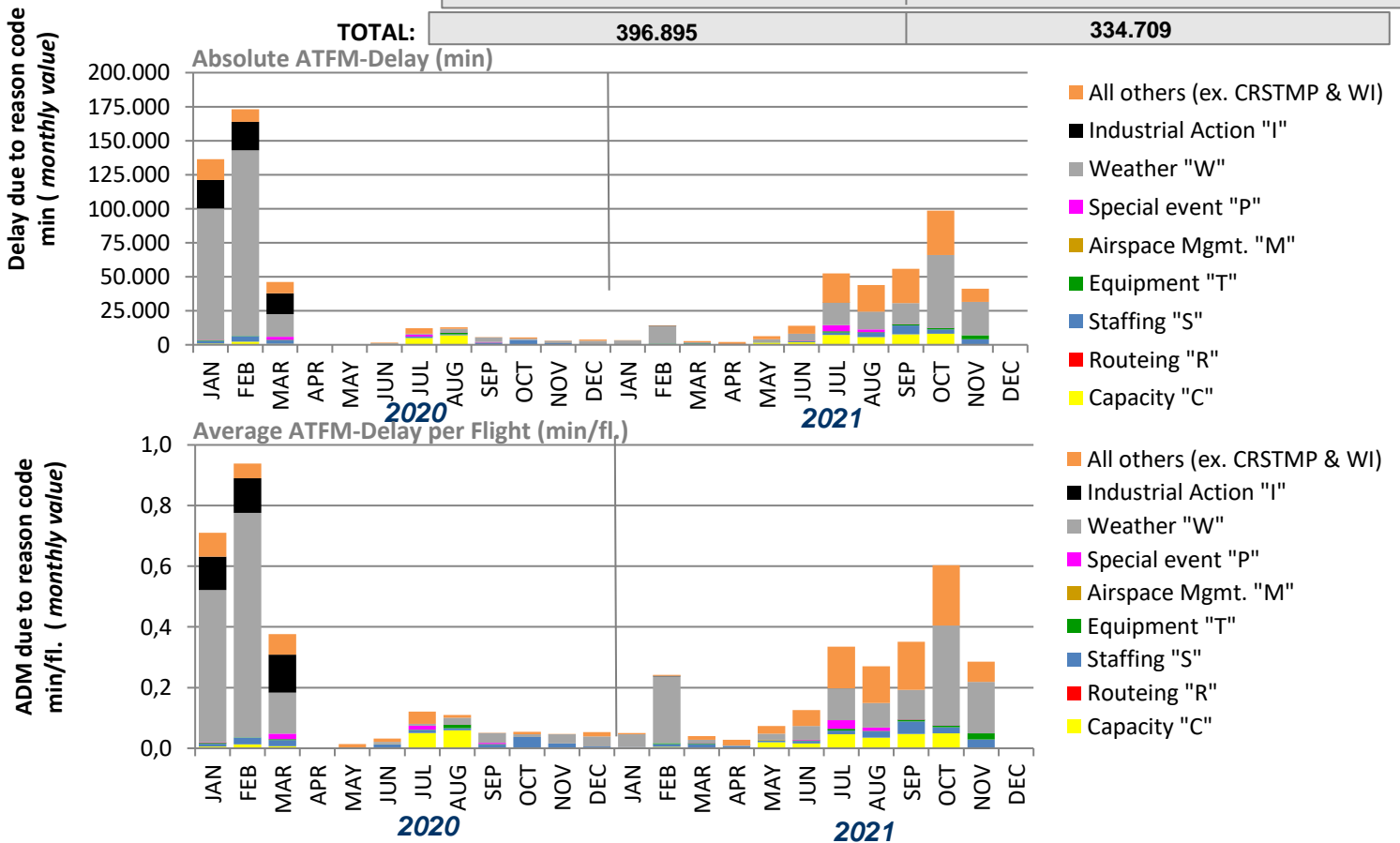
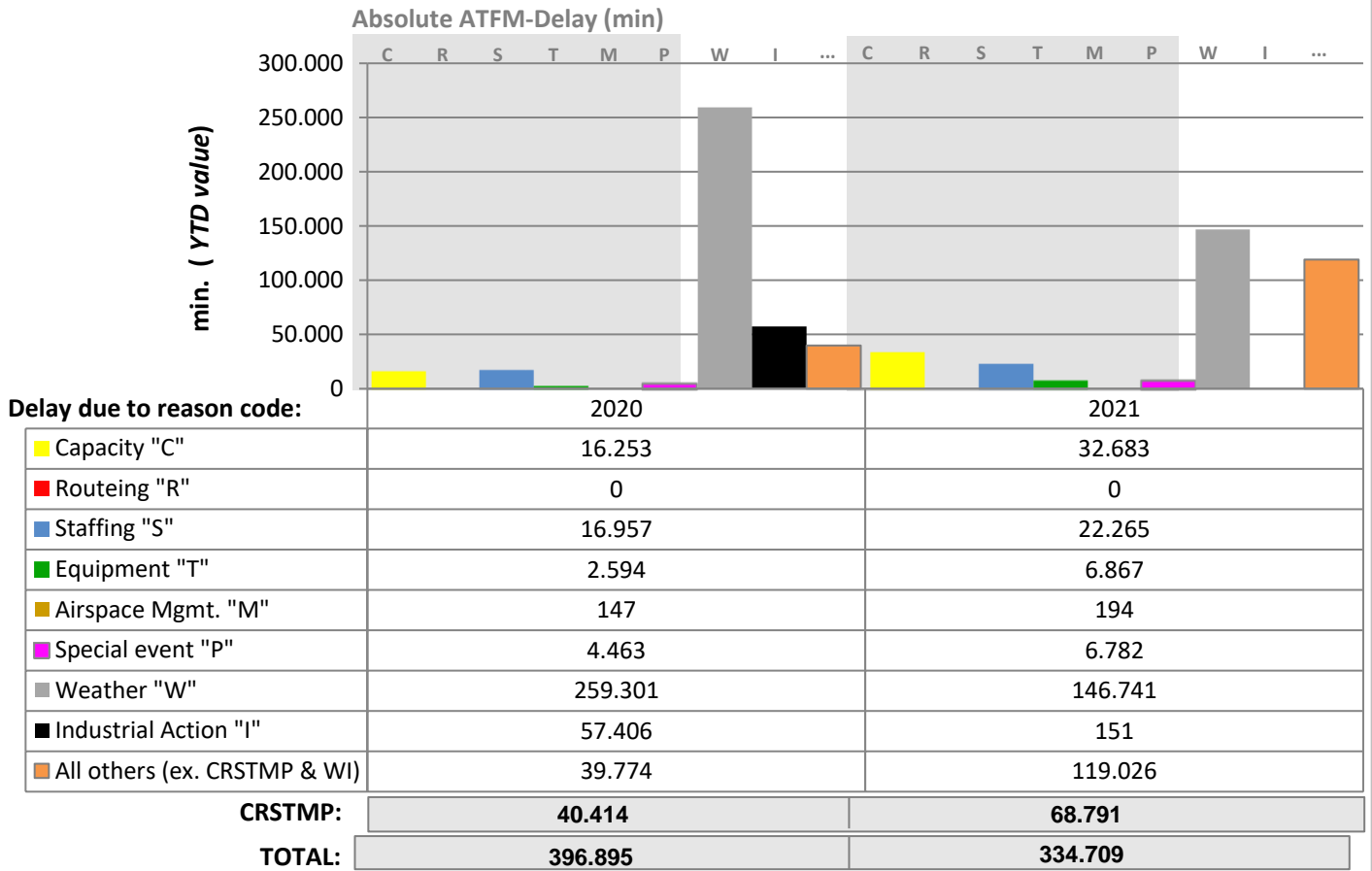
	skeyes	DFS	DSNA	LVNL	MUAC	skyguide
All others (ex. CRSTMP & WI)		0,00	0,00	0,00	0,00	0,00
Industrial Action "I"			0,00			
Weather "W"		0,08	0,05	0,01	0,00	0,02
Special event "P"		0,00	0,00	0,00		0,00
Airspace Mgmt. "M"		0,00	0,00		0,00	
Equipment "T"		0,00	0,01		0,00	0,00
Staffing "S"	0,01	0,04	0,24	0,00	0,00	0,00
Routeing "R"						
Capacity "C"	0,01	0,12	0,16	0,05	0,00	0,05

CRSTMP:	0,01	0,17	0,42	0,06	0,00	0,05
TOTAL:	0,01	0,24	0,48	0,07	0,00	0,07

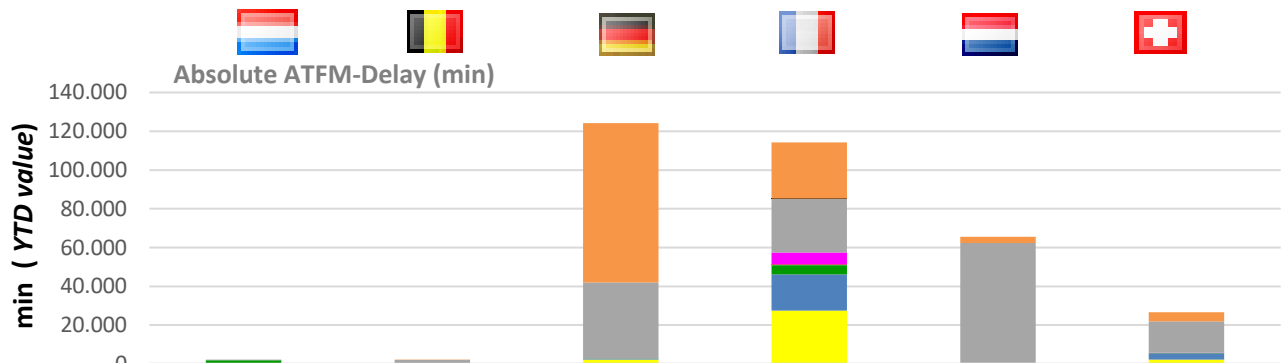
KPI #1: En-route ATFM delay per controlled flight (ACC)



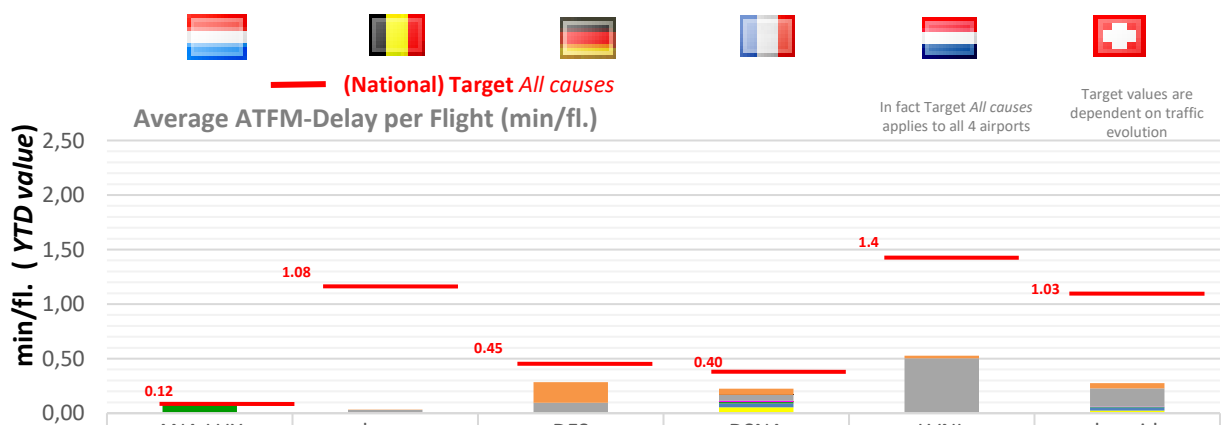
KPI #2: Arrival ATFM delay per reason code (FABEC)



KPI #2: Arrival ATFM delay per controlled flight (ANSP)



	ANA LUX	skeyes	DFS	DSNA	LVNL	skyguide
All others (ex. CRSTMP & WI)		20	82.166	28.871	3.234	4.735
Industrial Action "I"				151		
Weather "W"	336	1.639	39.166	27.639	61.788	16.173
Special event "P"		239		6.362		181
Airspace Mgmt. "M"				194		
Equipment "T"	1.804		100	4.794		169
Staffing "S"			507	18.650		3.108
Routeing "R"						
Capacity "C"		171	2.166	27.518	593	2.235
CRSTMP:	1.804	410	2.773	57.518	593	5.693
TOTAL:	2.140	2.069	124.105	114.179	65.615	26.601



	ANA LUX	skeyes	DFS	DSNA	LVNL	skyguide
All others (ex. CRSTMP & WI)		0,00	0,19	0,06	0,03	0,05
Industrial Action "I"				0,00		
Weather "W"	0,02	0,02	0,09	0,05	0,50	0,17
Special event "P"		0,00	0,00	0,01	0,00	0,00
Airspace Mgmt. "M"				0,00		
Equipment "T"	0,08		0,00	0,01	0,00	0,00
Staffing "S"			0,00	0,04		0,03
Routeing "R"						
Capacity "C"		0,00	0,00	0,05	0,00	0,02
CRSTMP:	0,08	0,01	0,01	0,11	0,00	0,06
TOTAL:	0,10	0,03	0,29	0,23	0,53	0,28

In fact Target All causes applies to all 4 airports
Target values are dependent on traffic evolution

Glossary

KPI #1:

KPI #1 is set by IR (EU) 2019/317 and is expressed in minutes per flight. The EU-wide targets set for RP3 for this indicator are for 2020: 0.9 min/fl., 2021: 0,35 min/fl., 2022: 0.5 min/fl., 2023: 0.5 min/fl., 2024: 0.5 min/fl.

The targets set at FABEC level are as follows for the indicator 'En-route ATFM delay (all regulation causes) per controlled flight' for **2020**: 3.45 min/fl., **2021**: 0.27 min/fl., **2022**: 0.37 min/fl., **2023**: 0.37 min/fl., **2024**: 0.37 min/fl.

The targets set at FABEC level are as follows for the indicator 'En-route ATFM delay (CRSTMP regulation causes) per controlled flight' for **2020**: n.a., **2021**: n.a., **2022**: 0.24 min/fl., **2023**: 0.24 min/fl., **2024**: 0.24 min/fl.

KPI #2:

KPI #2 is set by IR (EU) 2019/317 and is expressed in minutes per flight. For this indicator, no targets have been defined at EU and FABEC level for RP3. The targets have been set at local level.

Cause	CODE	Guidelines for Application
ATC Capacity	C	En Route: Demand exceeds or complexity reduces declared or expected ATC capacity Airport: Demand exceeds declared or expected ATC capacity.
ATC Industrial Action	I	Reduction in any capacity due to industrial action by ATC staff
ATC Routeings	R	Network solutions / scenarios used to balance demand and capacity
ATC Staffing	S	Unplanned staff shortage reducing expected capacity.
ATC Equipment	T	Reduction of expected or declared capacity due to the non-availability or degradation of equipment used to provide an ATC service.
Accident / Incident	A	Reduction of expected ATC capacity due to an aircraft accident / incident.
Aerodrome Capacity	G	Reduction in declared or expected capacity due to the degradation or non-availability of infrastructure at an airport. e.g. Work in Progress, shortage of aircraft stands etc. Or when demand exceeds expected aerodrome capacity.
Equipment NON ATC- to be Aerodrome Services	E	Reduced capacity due to the degradation or non-availability of support equipment at an airport e.g. Fire Service, De-icing / snow removal equipment or other ground handling equipment.
Industrial Action NON ATC	N	A reduction in expected / planned capacity due to industrial action by non ATC personnel.
Airspace Management	M	Reduction in declared or expected capacity following changes in airspace / route availability due to small scale military activity.
Special Event	P	Reduction in planned, declared or expected capacity or when demand exceeds the above capacities as a result of a major sporting, governmental or social event. It may also be used for ATM system upgrades and transitions. Large multinational military exercises may also use this reason. This category should only be used with prior approval during the planning process.
Weather	W	Reduction in expected capacity due to any weather phenomena. This includes where weather impacts airport infrastructure capacity, but where aerodrome services are operating as planned / expected.
Environmental Issues	V	Reduction in any capacity or when demand exceeds any capacity due to agreed local noise, runway usage or similar procedures. This category should only be used with prior agreement in the planning process.
Other	O	This should only be used in exceptional circumstances when no other category is sufficient. An explanatory ANM remark MUST be given to allow post ops analysis.

CRSTMP:

ATC Capacity (**C**), ATC Routeings (**R**), ATC Staffing (**S**), ATC Equipment (**T**), Airspace Management (**M**), Special Event (**P**); a set of regulation codes which are defined in the Common Charging Scheme Regulation (IR 2019/317) and subject to financial incentive.

Note: Arrival figures (traffic and delay) do only include EBBR and EBLG for Belgium and only EHAM for the Netherlands.

TABLE OF ABBREVIATIONS

ADM - Average en-route ATFM Delay per Movement
ANSP - Air Navigation Service Provider
ATFM - Air Traffic Flow Management
ANM - Aeronautical Notification Message
FABEC - Functional Airspace Block Europe Central

ATM - Air Traffic Management
PRU - Performance Review Unit
YTD - Year to Date value
FPP - FABEC Performance Plan
CODA - Central Office for Delay Analysis

FABEC Performance Report Capacity:

Editor: FABEC PMG

Sources: EUROCONTROL, FABEC ANSPs

Status: November 2021

www.FABEC.eu

Notice

The FABEC PMG has made every effort to ensure that the information and analysis contained in this document are as accurate and complete as possible.

Only information from quoted sources has been used and information relating to named parties has been checked with the parties concerned.

Despite these precautions, should you find any errors or inconsistencies we would be grateful if you could please bring them to the FABEC PMG's attention.