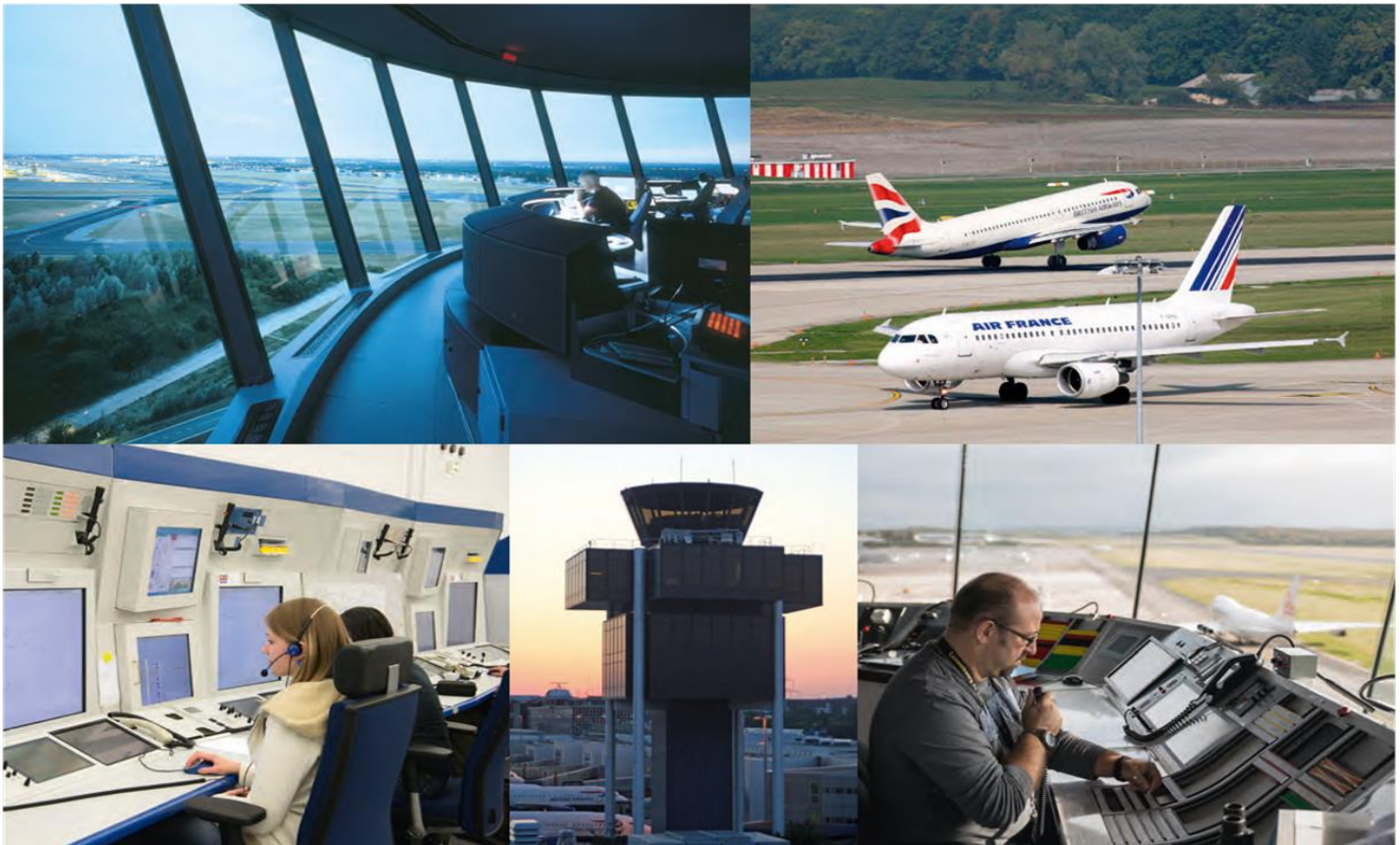




PERFORMANCE REPORT 2020 - 2024

CAPACITY

December 2021



making the difference

Contents

Description & Analysis	3
FABEC TRAFFIC DEVELOPMENT (en-route)	4
FABEC TRAFFIC DEVELOPMENT (arrival)	6
KPI #1: En-route ATFM delay per controlled flight (FABEC)	8
KPI #2: Arrival ATFM delay per controlled flight (FABEC)	9
KPI #1: En-route ATFM delay per reason code (FABEC)	10
KPI #1: En-route ATFM delay per controlled flight (ANSP)	11
KPI #1: En-route ATFM delay per controlled flight (ACC)	12
KPI #2: Arrival ATFM delay per reason code (FABEC)	13
KPI #2: Arrival ATFM delay per controlled flight (ANSP)	14
Glossary	15

Description & Analysis

Europe

Traffic in December was at 77.9% of December 2019 levels. Tightened travel restrictions to fight the Omicron wave constrained flight activity in December and therefore traffic was below the baseline of the latest EUROCONTROL traffic scenarios published on 15 October 2021. Traffic recovered to around 80% of 2019 levels in the second half of December holiday period. On average, the network saw 20,028 flights/day. The peak day was 17 December (24,029 flights) with traffic at 91.4% of 2019 levels. Week 50 (from 13 to 19 December) was the busiest of the month with an average of 21,216 flights per day. Ryanair remained the busiest carrier in December with on average 2,025 flights/day and was at its 2019 traffic level, followed by Turkish Airlines (1,016 flights/day), easyJet (984 flights/day) and Lufthansa (857 flights/day). The busiest airport was Amsterdam/Schiphol (1,011 flights/day) followed by Paris/Charles de Gaulle (956 flights/day), IGA Istanbul (908 flights/day) and Frankfurt/Main (902 flights/day).

The charter segment surged to an increase of 27.5% in December 2021 compared to December 2019. All-Cargo posted its most significant increase of the year and grew 18.4% whereas business aviation increased by 14.0% on December 2019. On the other hand, while still negative, the traditional scheduled and low-cost segments recorded an improved decrease of -30.6% and -25.5% respectively in December 2021 (vs. December 2019).

There was a total of 271,203 minutes of ATFM delay in December. The flow measures were mainly in Reims, Warsaw, and Karlsruhe ACCs. En-route delays accounted for 60.5% of these ATFM delays and airports for 39.5%. Network departure punctuality decreased around 75% and arrival punctuality decreased around 78%. With fewer airspace constraints, the network excess fuel burn indicator remained low compared to 2019. For 2021 overall, traffic was at -44% of 2019 levels and ATFM delays at -88%. (Source: NM).

Delays from the passengers' point of view

For December 2021, the Central Office for Delay Analysis (CODA) reported that the average delay per flight on departure was 12.4 minutes per flight - an increase of 4.0 minutes per flight compared to December 2020. 14% of the total delay can be attributable to air traffic control. Airlines caused 52% of the total delay, resulting from such issues as technical problems, staff shortages or turnaround times that are too tightly scheduled. Airports caused 6% of the delays while the rest (IATA Code 85,86,71-79,97-99) of around 28% can be allocated to other reasons (Source: CODA Dashboard-12-2021, Date 31/01/2022).

FABEC

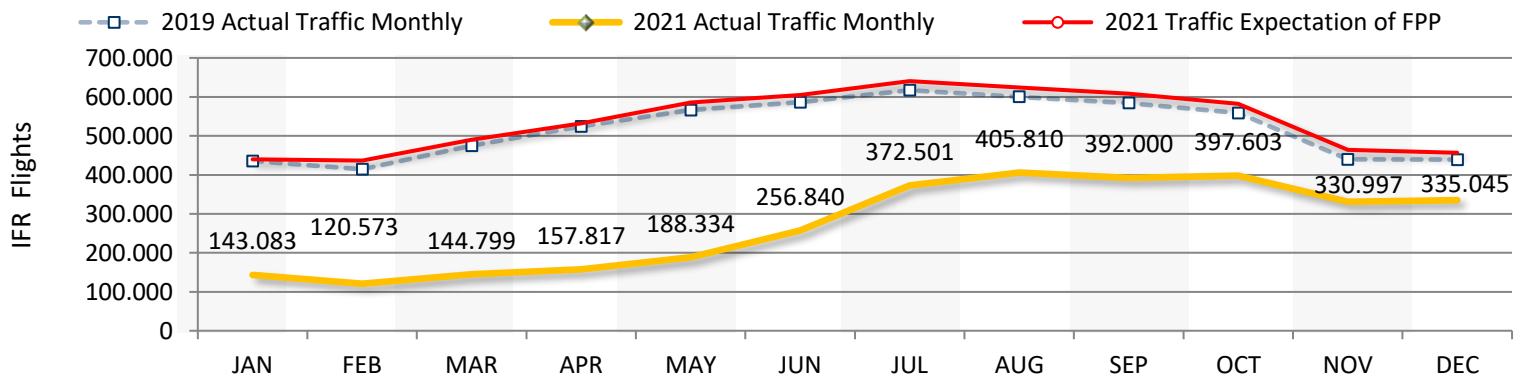
In the FABEC area, traffic decreased by 23.6% in December 2021 compared to the same month in 2019, leading to a 48% traffic decrease for the entire year. Traffic was down in a similar way in all ANSPs, from -27.3% in DFS, -22.2% in MUAC to -19.7% in Skyguide or -18.5% in DSN. Airport traffic was down to a similar extent (-25.1% in the FABEC area, -47.4% for the entire year vs. 2019) but with more disparities between ANSPs. Landings decreased by 33% in DFS, 28.7% in Skyguide, but "only" 19.8% in skeyes, 17.8% in DSN or 16.1% in ANA LUX.

In December 2021, Reims ACC (36 726 min), Karlsruhe UAC (24 500 min), Paris ACC (15 190 min) and Bremen ACC (13 320 min) were the units to generate some en-route ATFM delays. In Reims, delays were due to 'Staffing' (87%) and 'ATC-Capacity' (13%). In Karlsruhe, delays were due to 'ATC-Capacity' (74%), 'Staffing' (24%), 'Weather' (1%) and 'Other' (1%); in Paris, 'Staffing' (91%) and 'ATC-Capacity' (9%); in Bremen, 'Equipment (ATC)' (72%), 'Staffing' (19%), 'ATC-Capacity' (5%), 'Special Event' (2%) and 'Airspace management' (1%).

Airport ATFM delays were mainly generated in Amsterdam Schiphol/EHAM (18 347 min), Frankfurt am Main/EDDF (5 669 min), Zurich/LSZH (4 513 min) and Paris Orly/LFPO (4 325 min). In Amsterdam Schiphol, delays were due to 'Weather' (89%), 'Aerodrome Capacity' (9%) and 'Aerodrome Capacity (ATC)' (2%); in Frankfurt am Main, delays were due to 'Aerodrome Services' (65%) and 'Weather' (35%); in Zurich, 'Weather' (57%), 'Aerodrome Disruptions (ATC)' (22%), 'Aerodrome Capacity (ATC)' (12%) and 'Aerodrome Capacity' (8%); in Paris Orly, 'Weather' (49%), 'Staffing' (47%), 'Aerodrome Disruptions (ATC)' (2%), 'Aerodrome Capacity (ATC)' (1%) and 'Aerodrome Capacity' (1%).

FABEC TRAFFIC DEVELOPMENT (*en-route*)

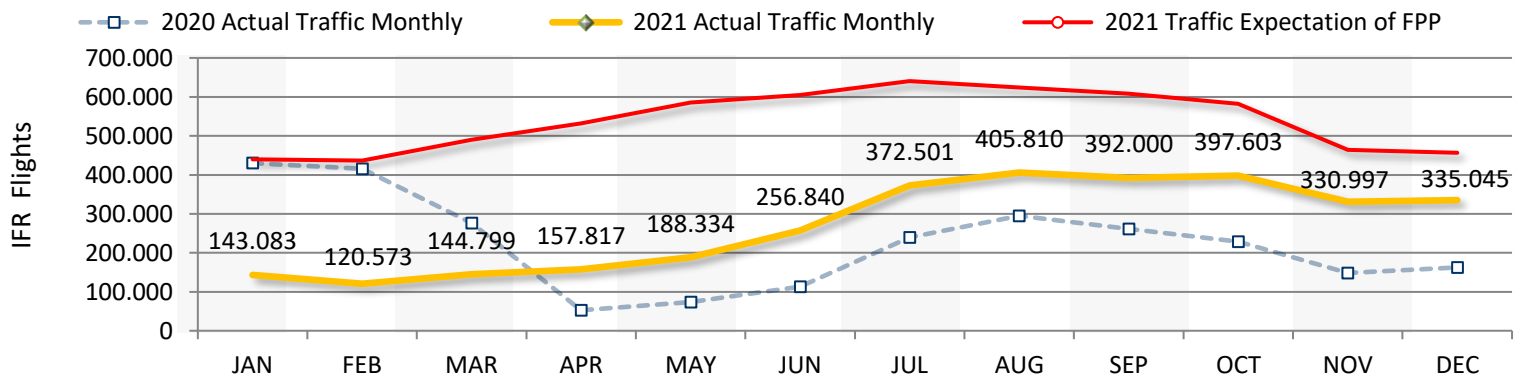
FABEC	JAN	FEB	MAR	APR	MAY	JUN	JUL	AUG	SEP	OCT	NOV	DEC	YTD
2019 Actual Traffic Monthly	435.809	414.272	474.729	524.490	566.051	586.281	617.104	600.261	584.310	558.973	439.854	438.590	6.240.724
2021 Actual Traffic Monthly	143.083	120.573	144.799	157.817	188.334	256.840	372.501	405.810	392.000	397.603	330.997	335.045	3.245.402
Growth (%)	-67,2 %	-70,9 %	-69,5 %	-69,9 %	-66,7 %	-56,2 %	-39,6 %	-32,4 %	-32,9 %	-28,9 %	-24,7 %	-23,6 %	-48,0 %
2021 Traffic Expectation of FPP	440.186	436.609	490.117	531.721	585.472	604.612	640.569	624.188	608.495	582.617	463.715	456.759	6.465.057
2021 Traffic Evolution (%)	-67,5 %	-72,4 %	-70,5 %	-70,3 %	-67,8 %	-57,5 %	-41,8 %	-35,0 %	-35,6 %	-31,8 %	-28,6 %	-26,6 %	
2021 Traffic Cumulated (%)	-67,5 %	-69,9 %	-70,1 %	-70,2 %	-69,6 %	-67,3 %	-62,9 %	-58,9 %	-56,0 %	-53,5 %	-51,6 %	-49,8 %	



	JAN	FEB	MAR	APR	MAY	JUN	JUL	AUG	SEP	OCT	NOV	DEC	YTD
skeyes													
2019 Actual Traffic Monthly	46.085	42.458	49.539	53.761	57.702	58.513	62.239	59.274	59.410	57.544	46.709	46.631	639.865
2021 Actual Traffic Monthly	16.463	14.094	16.118	17.943	21.059	28.862	39.735	41.471	41.821	42.447	37.123	36.707	353.843
Growth (%)	-64,3 %	-66,8 %	-67,5 %	-66,6 %	-63,5 %	-50,7 %	-36,2 %	-30,0 %	-29,6 %	-26,2 %	-20,5 %	-21,3 %	-44,7 %
DFS													
2019 Actual Traffic Monthly	222.009	211.766	240.686	258.289	282.291	286.199	299.444	292.210	291.681	284.915	225.050	223.636	3.118.176
2021 Actual Traffic Monthly	69.223	58.987	73.586	82.028	92.241	121.837	173.210	188.953	188.222	196.416	162.314	162.625	1.569.642
Growth (%)	-68,8 %	-72,1 %	-69,4 %	-68,2 %	-67,3 %	-57,4 %	-42,2 %	-35,3 %	-35,5 %	-31,1 %	-27,9 %	-27,3 %	-49,7 %
DSNA													
2019 Actual Traffic Monthly	221.573	209.836	244.322	283.032	302.429	321.951	340.265	329.402	313.806	292.190	221.663	221.576	3.302.045
2021 Actual Traffic Monthly	74.364	60.927	71.495	78.739	101.198	144.886	217.301	233.949	219.460	218.318	177.239	180.584	1.778.460
Growth (%)	-66,4 %	-71,0 %	-70,7 %	-72,2 %	-66,5 %	-55,0 %	-36,1 %	-29,0 %	-30,1 %	-25,3 %	-20,0 %	-18,5 %	-46,1 %
LVNL													
2019 Actual Traffic Monthly	46.111	44.366	50.512	53.470	57.492	55.907	57.593	57.195	56.974	57.181	47.564	47.298	631.663
2021 Actual Traffic Monthly	17.808	13.733	16.695	18.430	21.043	25.726	37.108	40.138	39.398	40.584	36.287	37.132	344.082
Growth (%)	-61,4 %	-69,0 %	-66,9 %	-65,5 %	-63,4 %	-54,0 %	-35,6 %	-29,8 %	-30,8 %	-29,0 %	-23,7 %	-21,5 %	-45,5 %
MUAC													
2019 Actual Traffic Monthly	138.773	129.324	147.712	154.875	164.086	166.793	176.133	173.200	168.761	166.082	137.728	139.287	1.862.754
2021 Actual Traffic Monthly	44.474	34.373	41.453	46.276	52.330	69.124	98.093	109.221	110.820	117.451	104.364	108.381	936.360
Growth (%)	-68,0 %	-73,4 %	-71,9 %	-70,1 %	-68,1 %	-58,6 %	-44,3 %	-36,9 %	-34,3 %	-29,3 %	-24,2 %	-22,2 %	-49,7 %
Skyguide													
2019 Actual Traffic Monthly	89.334	86.268	99.645	110.651	120.991	127.214	133.394	127.821	124.023	115.533	86.141	89.466	1.310.481
2021 Actual Traffic Monthly	26.405	22.687	28.012	32.619	39.721	54.940	83.886	91.102	86.948	87.464	67.552	71.855	693.191
Growth (%)	-70,4 %	-73,7 %	-71,9 %	-70,5 %	-67,2 %	-56,8 %	-37,1 %	-28,7 %	-29,9 %	-24,3 %	-21,6 %	-19,7 %	-47,1 %

FABEC TRAFFIC DEVELOPMENT (*en-route*)

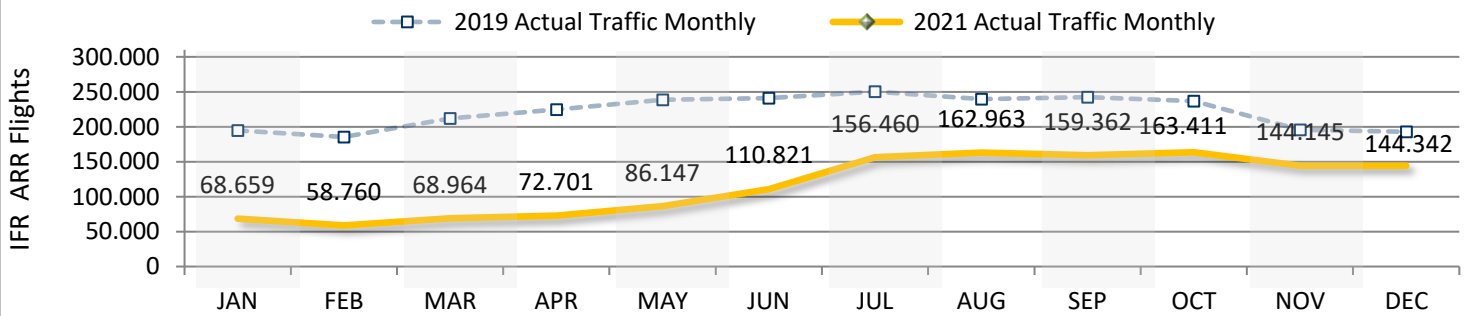
FABEC	JAN	FEB	MAR	APR	MAY	JUN	JUL	AUG	SEP	OCT	NOV	DEC	YTD
2020 Actual Traffic Monthly	430.110	415.561	276.631	52.526	73.371	113.300	239.693	294.852	261.378	228.453	147.896	162.450	2.696.221
2021 Actual Traffic Monthly	143.083	120.573	144.799	157.817	188.334	256.840	372.501	405.810	392.000	397.603	330.997	335.045	3.245.402
Growth (%)	-66,7 %	-71,0 %	-47,7 %	200,5 %	156,7 %	126,7 %	55,4 %	37,6 %	50,0 %	74,0 %	123,8 %	106,2 %	20,4 %
2021 Traffic Expectation of FPP	440.186	436.609	490.117	531.721	585.472	604.612	640.569	624.188	608.495	582.617	463.715	456.759	6.465.057
2021 Traffic Evolution (%)	-67,5 %	-72,4 %	-70,5 %	-70,3 %	-67,8 %	-57,5 %	-41,8 %	-35,0 %	-35,6 %	-31,8 %	-28,6 %	-26,6 %	
2021 Traffic Cumulated (%)	-67,5 %	-69,9 %	-70,1 %	-70,2 %	-69,6 %	-67,3 %	-62,9 %	-58,9 %	-56,0 %	-53,5 %	-51,6 %	-49,8 %	



	JAN	FEB	MAR	APR	MAY	JUN	JUL	AUG	SEP	OCT	NOV	DEC	YTD
skeyes													
2020 Actual Traffic Monthly	44.865	43.754	30.860	7.531	9.492	13.158	26.573	29.137	25.192	22.506	17.536	19.339	289.943
2021 Actual Traffic Monthly	16.463	14.094	16.118	17.943	21.059	28.862	39.735	41.471	41.821	42.447	37.123	36.707	353.843
Growth (%)	-63,3 %	-67,8 %	-47,8 %	138,3 %	121,9 %	119,3 %	49,5 %	42,3 %	66,0 %	88,6 %	111,7 %	89,8 %	22,0 %
DFS													
2020 Actual Traffic Monthly	218.493	209.352	141.583	32.194	42.441	60.990	115.966	139.327	132.000	118.171	77.513	79.398	1.367.428
2021 Actual Traffic Monthly	69.223	58.987	73.586	82.028	92.241	121.837	173.210	188.953	188.222	196.416	162.314	162.625	1.569.642
Growth (%)	-68,3 %	-71,8 %	-48,0 %	154,8 %	117,3 %	99,8 %	49,4 %	35,6 %	42,6 %	66,2 %	109,4 %	104,8 %	14,8 %
DSNA													
2020 Actual Traffic Monthly	217.787	213.859	140.091	19.006	27.568	49.864	131.897	166.442	134.236	111.919	69.265	83.459	1.365.393
2021 Actual Traffic Monthly	74.364	60.927	71.495	78.739	101.198	144.886	217.301	233.949	219.460	218.318	177.239	180.584	1.778.460
Growth (%)	-65,9 %	-71,5 %	-49,0 %	314,3 %	267,1 %	190,6 %	64,8 %	40,6 %	63,5 %	95,1 %	155,9 %	116,4 %	30,3 %
LVNL													
2020 Actual Traffic Monthly	46.552	44.046	32.102	6.404	9.188	12.648	22.853	30.023	28.650	25.096	19.150	19.934	296.646
2021 Actual Traffic Monthly	17.808	13.733	16.695	18.430	21.043	25.726	37.108	40.138	39.398	40.584	36.287	37.132	344.082
Growth (%)	-61,7 %	-68,8 %	-48,0 %	187,8 %	129,0 %	103,4 %	62,4 %	33,7 %	37,5 %	61,7 %	89,5 %	86,3 %	16,0 %
MUAC													
2020 Actual Traffic Monthly	133.754	127.979	91.834	18.524	24.874	32.882	65.762	86.306	79.956	71.184	47.963	51.870	832.888
2021 Actual Traffic Monthly	44.474	34.373	41.453	46.276	52.330	69.124	98.093	109.221	110.820	117.451	104.364	108.381	936.360
Growth (%)	-66,7 %	-73,1 %	-54,9 %	149,8 %	110,4 %	110,2 %	49,2 %	26,6 %	38,6 %	65,0 %	117,6 %	108,9 %	12,4 %
Skyguide													
2020 Actual Traffic Monthly	90.405	88.622	52.617	8.004	11.569	20.805	50.662	62.083	51.333	43.305	25.675	30.073	535.153
2021 Actual Traffic Monthly	26.405	22.687	28.012	32.619	39.721	54.940	83.886	91.102	86.948	87.464	67.552	71.855	693.191
Growth (%)	-70,8 %	-74,4 %	-46,8 %	307,5 %	243,3 %	164,1 %	65,6 %	46,7 %	69,4 %	102,0 %	163,1 %	138,9 %	29,5 %

FABEC TRAFFIC DEVELOPMENT (*arrival*)

FABEC	JAN	FEB	MAR	APR	MAY	JUN	JUL	AUG	SEP	OCT	NOV	DEC	YTD
2019 Actual Traffic Monthly	194.850	185.420	211.796	224.471	238.490	240.788	250.186	239.483	242.195	236.830	195.678	192.743	2.652.930
2021 Actual Traffic Monthly	68.659	58.760	68.964	72.701	86.147	110.821	156.460	162.963	159.362	163.411	144.145	144.342	1.396.735
Growth (%)	-64,8 %	-68,3 %	-67,4 %	-67,6 %	-63,9 %	-54,0 %	-37,5 %	-32,0 %	-34,2 %	-31,0 %	-26,3 %	-25,1 %	-47,4 %



	JAN	FEB	MAR	APR	MAY	JUN	JUL	AUG	SEP	OCT	NOV	DEC	YTD
ANA LUX													
2019 Actual Traffic Monthly	2.728	2.640	3.007	3.285	3.451	3.420	3.410	3.160	3.445	3.466	3.150	3.022	38.184
2021 Actual Traffic Monthly	1.307	1.097	1.270	1.451	1.677	1.957	2.362	2.447	2.603	2.694	2.449	2.534	23.848
Growth (%)	-52,1 %	-58,4 %	-57,8 %	-55,8 %	-51,4 %	-42,8 %	-30,7 %	-22,6 %	-24,4 %	-22,3 %	-22,3 %	-16,1 %	-37,5 %

	JAN	FEB	MAR	APR	MAY	JUN	JUL	AUG	SEP	OCT	NOV	DEC	YTD
skeyes													
2019 Actual Traffic Monthly	9.804	8.825	10.293	11.083	11.763	11.678	12.607	12.086	12.016	11.632	10.315	9.981	132.083
2021 Actual Traffic Monthly	4.154	3.655	4.074	4.379	5.095	6.322	8.419	8.799	8.622	8.480	8.042	8.000	78.041
Growth (%)	-57,6 %	-58,6 %	-60,4 %	-60,5 %	-56,7 %	-45,9 %	-33,2 %	-27,2 %	-28,2 %	-27,1 %	-22,0 %	-19,8 %	-40,9 %

	JAN	FEB	MAR	APR	MAY	JUN	JUL	AUG	SEP	OCT	NOV	DEC	YTD
DFS													
2019 Actual Traffic Monthly	78.274	75.894	85.673	88.848	96.254	95.027	98.049	95.422	98.321	97.898	79.529	76.266	1.065.455
2021 Actual Traffic Monthly	20.815	18.158	23.398	25.886	28.960	36.973	52.200	55.684	57.467	61.619	53.725	51.093	485.978
Growth (%)	-73,4 %	-76,1 %	-72,7 %	-70,9 %	-69,9 %	-61,1 %	-46,8 %	-41,6 %	-41,6 %	-37,1 %	-32,4 %	-33,0 %	-54,4 %

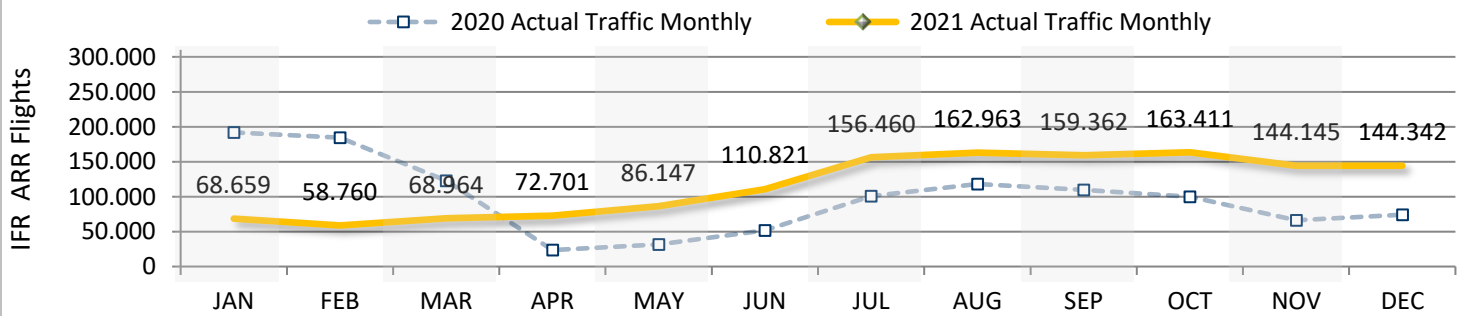
	JAN	FEB	MAR	APR	MAY	JUN	JUL	AUG	SEP	OCT	NOV	DEC	YTD
DSNA													
2019 Actual Traffic Monthly	66.766	63.317	73.401	81.023	84.477	88.656	92.799	86.055	86.206	81.851	67.332	66.631	938.514
2021 Actual Traffic Monthly	30.058	26.603	29.318	28.379	35.836	47.349	65.705	66.191	61.823	60.497	53.878	54.776	560.413
Growth (%)	-55,0 %	-58,0 %	-60,1 %	-65,0 %	-57,6 %	-46,6 %	-29,2 %	-23,1 %	-28,3 %	-26,1 %	-20,0 %	-17,8 %	-40,3 %

	JAN	FEB	MAR	APR	MAY	JUN	JUL	AUG	SEP	OCT	NOV	DEC	YTD
LVNL													
2019 Actual Traffic Monthly	18.998	18.021	20.363	21.455	22.973	22.330	22.933	23.046	22.639	22.777	19.390	19.628	254.553
2021 Actual Traffic Monthly	7.583	5.531	6.437	7.215	8.290	10.212	15.217	16.532	15.854	16.496	14.858	15.667	139.892
Growth (%)	-60,1 %	-69,3 %	-68,4 %	-66,4 %	-63,9 %	-54,3 %	-33,6 %	-28,3 %	-30,0 %	-27,6 %	-23,4 %	-20,2 %	-45,0 %

	JAN	FEB	MAR	APR	MAY	JUN	JUL	AUG	SEP	OCT	NOV	DEC	YTD
Skyguide													
2019 Actual Traffic Monthly	18.280	16.723	19.059	18.777	19.572	19.677	20.388	19.714	19.568	19.206	15.962	17.215	224.141
2021 Actual Traffic Monthly	4.742	3.716	4.467	5.391	6.289	8.008	12.557	13.310	12.993	13.625	11.193	12.272	108.563
Growth (%)	-74,1 %	-77,8 %	-76,6 %	-71,3 %	-67,9 %	-59,3 %	-38,4 %	-32,5 %	-33,6 %	-29,1 %	-29,9 %	-28,7 %	-51,6 %

FABEC TRAFFIC DEVELOPMENT (*arrival*)

FABEC	JAN	FEB	MAR	APR	MAY	JUN	JUL	AUG	SEP	OCT	NOV	DEC	YTD
2020 Actual Traffic Monthly	191.890	184.251	122.668	23.552	31.760	51.750	100.748	117.893	109.808	99.745	66.007	74.203	1.174.275
2021 Actual Traffic Monthly	68.659	58.760	68.964	72.701	86.147	110.821	156.460	162.963	159.362	163.411	144.145	144.342	1.396.735
Growth (%)	-64,2 %	-68,1 %	-43,8 %	208,7 %	171,2 %	114,1 %	55,3 %	38,2 %	45,1 %	63,8 %	118,4 %	94,5 %	18,9 %



	JAN	FEB	MAR	APR	MAY	JUN	JUL	AUG	SEP	OCT	NOV	DEC	YTD
ANA LUX													
2020 Actual Traffic Monthly	2.881	2.739	1.943	563	694	1.112	1.856	1.881	1.808	1.778	1.456	1.476	20.187
2021 Actual Traffic Monthly	1.307	1.097	1.270	1.451	1.677	1.957	2.362	2.447	2.603	2.694	2.449	2.534	23.848
Growth (%)	-54,6 %	-59,9 %	-34,6 %	157,7 %	141,6 %	76,0 %	27,3 %	30,1 %	44,0 %	51,5 %	68,2 %	71,7 %	18,1 %

	skeyes												YTD
2020 Actual Traffic Monthly	9.672	9.405	6.820	2.284	2.770	3.248	5.434	5.647	4.944	4.860	4.195	4.738	64.017
2021 Actual Traffic Monthly	4.154	3.655	4.074	4.379	5.095	6.322	8.419	8.799	8.622	8.480	8.042	8.000	78.041
Growth (%)	-57,1 %	-61,1 %	-40,3 %	91,7 %	83,9 %	94,6 %	54,9 %	55,8 %	74,4 %	74,5 %	91,7 %	68,8 %	21,9 %

	DFS												YTD
2020 Actual Traffic Monthly	75.120	72.932	48.729	10.990	13.307	19.202	34.829	39.685	39.172	36.662	24.273	23.968	438.869
2021 Actual Traffic Monthly	20.815	18.158	23.398	25.886	28.960	36.973	52.200	55.684	57.467	61.619	53.725	51.093	485.978
Growth (%)	-72,3 %	-75,1 %	-52,0 %	135,5 %	117,6 %	92,5 %	49,9 %	40,3 %	46,7 %	68,1 %	121,3 %	113,2 %	10,7 %

	DSNA												YTD
2020 Actual Traffic Monthly	67.407	64.707	41.888	6.207	9.979	20.145	42.434	49.570	44.825	39.774	24.103	30.323	441.362
2021 Actual Traffic Monthly	30.058	26.603	29.318	28.379	35.836	47.349	65.705	66.191	61.823	60.497	53.878	54.776	560.413
Growth (%)	-55,4 %	-58,9 %	-30,0 %	357,2 %	259,1 %	135,0 %	54,8 %	33,5 %	37,9 %	52,1 %	123,5 %	80,6 %	27,0 %

	LVNL												YTD
2020 Actual Traffic Monthly	19.188	17.938	12.953	2.274	3.146	4.383	8.362	12.014	11.506	10.112	7.696	8.300	117.872
2021 Actual Traffic Monthly	7.583	5.531	6.437	7.215	8.290	10.212	15.217	16.532	15.854	16.496	14.858	15.667	139.892
Growth (%)	-60,5 %	-69,2 %	-50,3 %	217,3 %	163,5 %	133,0 %	82,0 %	37,6 %	37,8 %	63,1 %	93,1 %	88,8 %	18,7 %

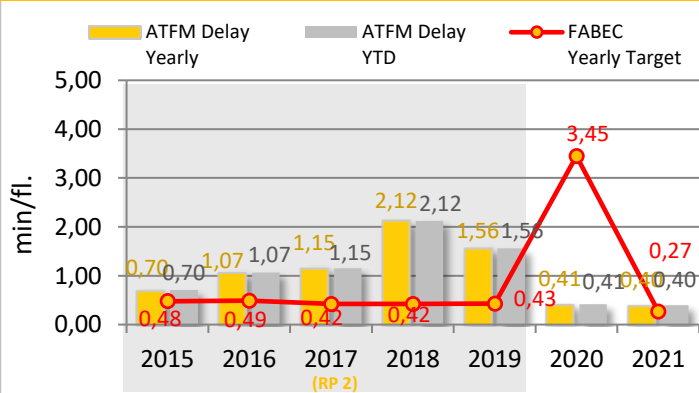
	Skyguide												YTD
2020 Actual Traffic Monthly	17.622	16.530	10.335	1.234	1.864	3.660	7.833	9.096	7.553	6.559	4.284	5.398	91.968
2021 Actual Traffic Monthly	4.742	3.716	4.467	5.391	6.289	8.008	12.557	13.310	12.993	13.625	11.193	12.272	108.563
Growth (%)	-73,1 %	-77,5 %	-56,8 %	336,9 %	237,4 %	118,8 %	60,3 %	46,3 %	72,0 %	107,7 %	161,3 %	127,3 %	18,0 %

KPI #1: En-route ATFM delay per controlled flight (FABEC)

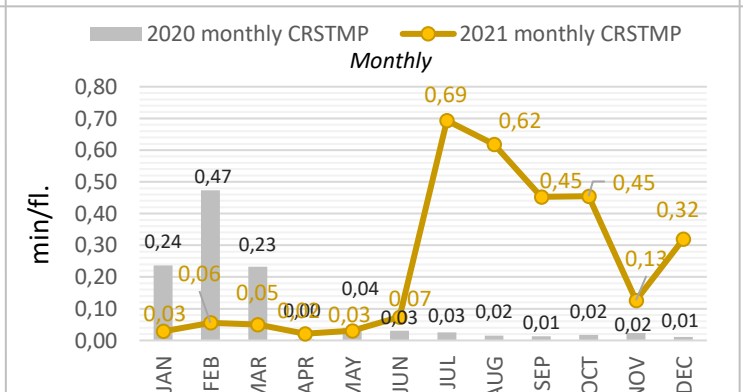
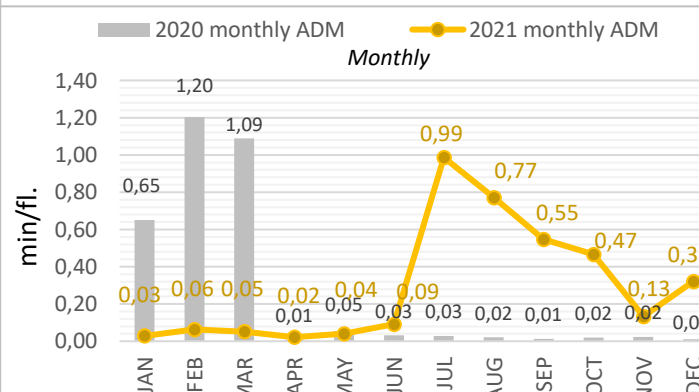
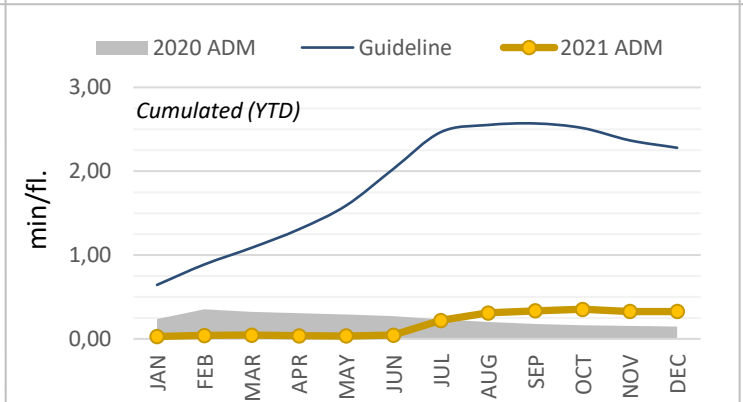
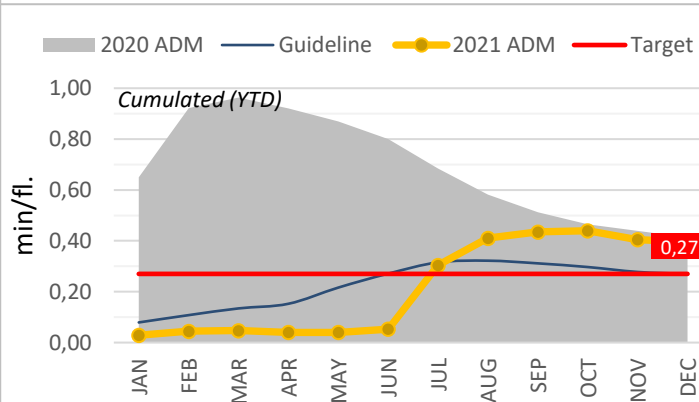
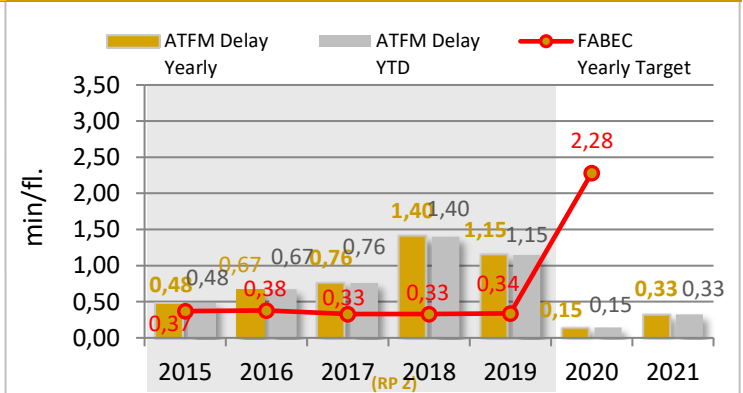
	YTD 2021	YTD 2020	YTD 2021	YTD 2020
En-route Delay All causes	0,40	0,41	0,33	0,15
FABEC Target (yearly value)	0,27		n.a.	
Guideline	0,27		2,28	
Minute ('000) ALL causes	1.286	1.115	1.062	392
Diff. 2021 - 2020	+ 15,3 %		+ 171 %	
Traffic ('000)	3.245	2.696		
Diff. 2021 - 2020	+ 20,4 %			
<i>Potential savings (*) due to underbid the delay Target (all Causes) in Mio EURO (YTD) + 0,01</i>				

* Cost of ATFM-delay per min = 87 €

All Delay Causes



CRSTMP Delay Causes



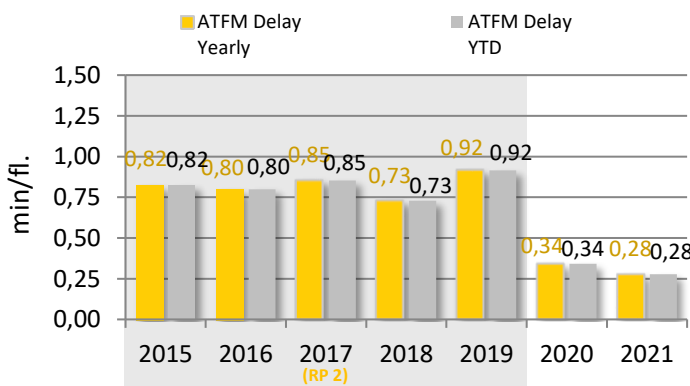
The guideline for the en-route ATFM delay per movement is a basic cumulative extrapolation of the previous three years monthly allocation and is designed to give an impression, how the YTD figures should be, in order to reach the yearly 2021 published targets (3,88 min per flight for all delay causes and 2,56 min per flight for the delay causes CRSTMP). It should be noted that the FPP is still being coordinated and it is therefore very likely that the target value will be adjusted.

KPI #2: Arrival ATFM delay per controlled flight (FABEC)

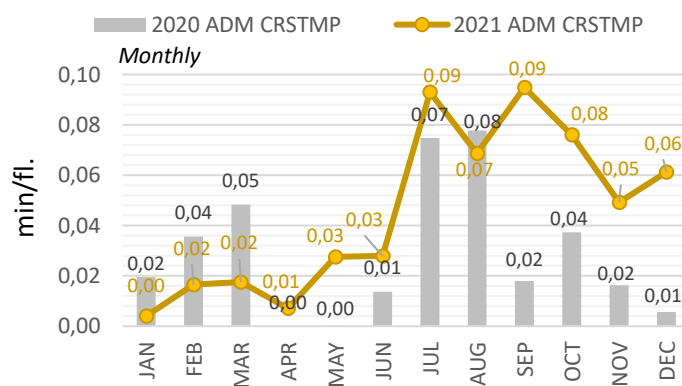
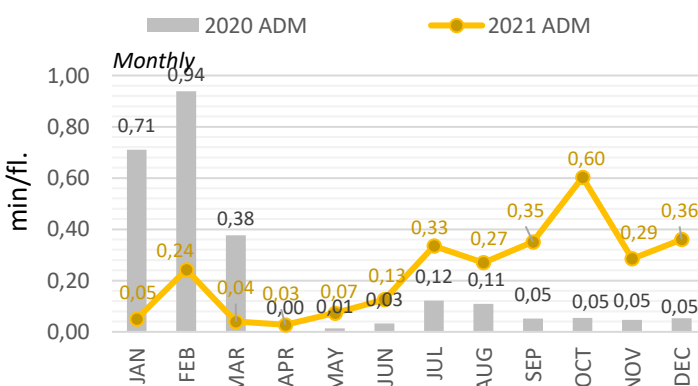
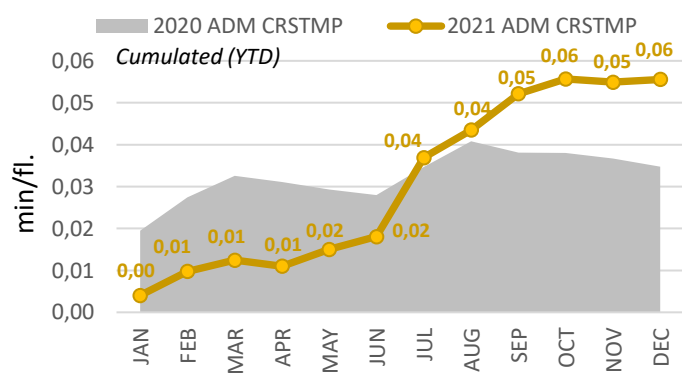
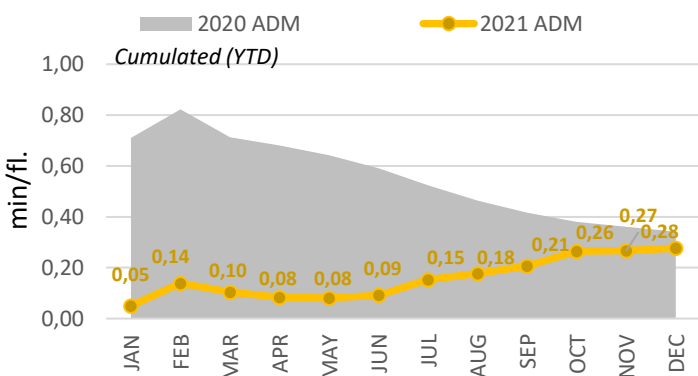
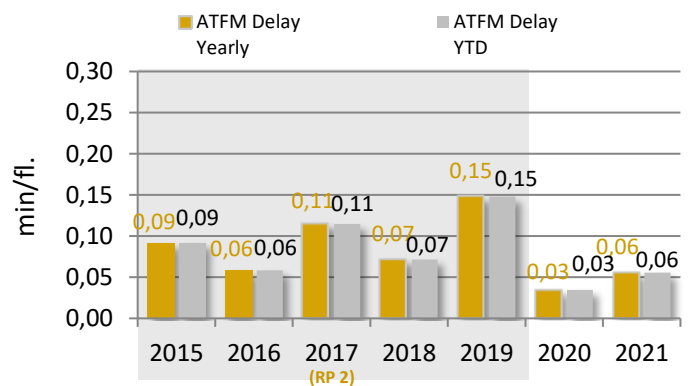
	YTD 2021	YTD 2020
Arrival Delay All causes	0,28	0,34
Diff. 2021 - 2020	- 19 %	
Minute ('000) ALL causes	387	401
Diff. 2021 - 2020	- 4 %	
Traffic ('000)	1.397	1.174
Diff. 2021 - 2020	+ 18,9 %	

	YTD 2021	YTD 2020
Arrival Delay CRSTMP causes	0,06	0,03
Diff. 2021 - 2020	+ 60 %	
Minute ('000) CRSTMP causes	78	41
Diff. 2021 - 2020	+ 90 %	

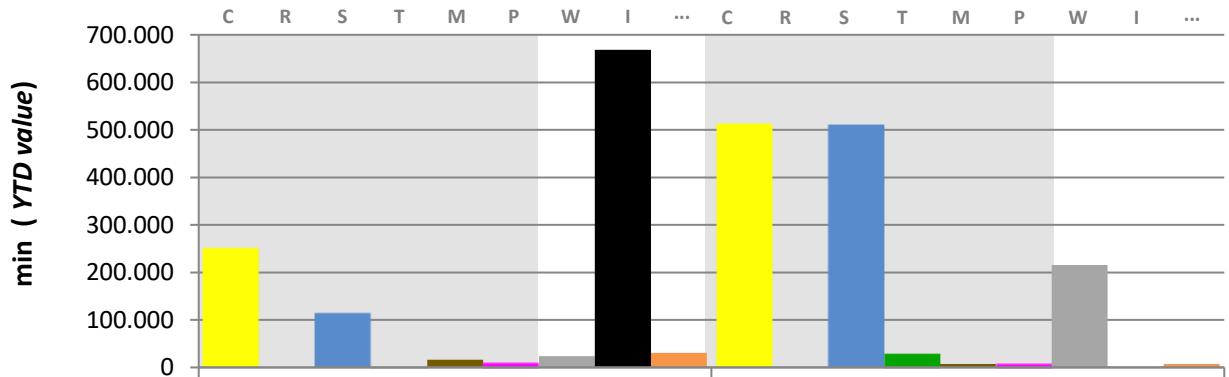
All Delay Causes



CRSTMP Delay Causes

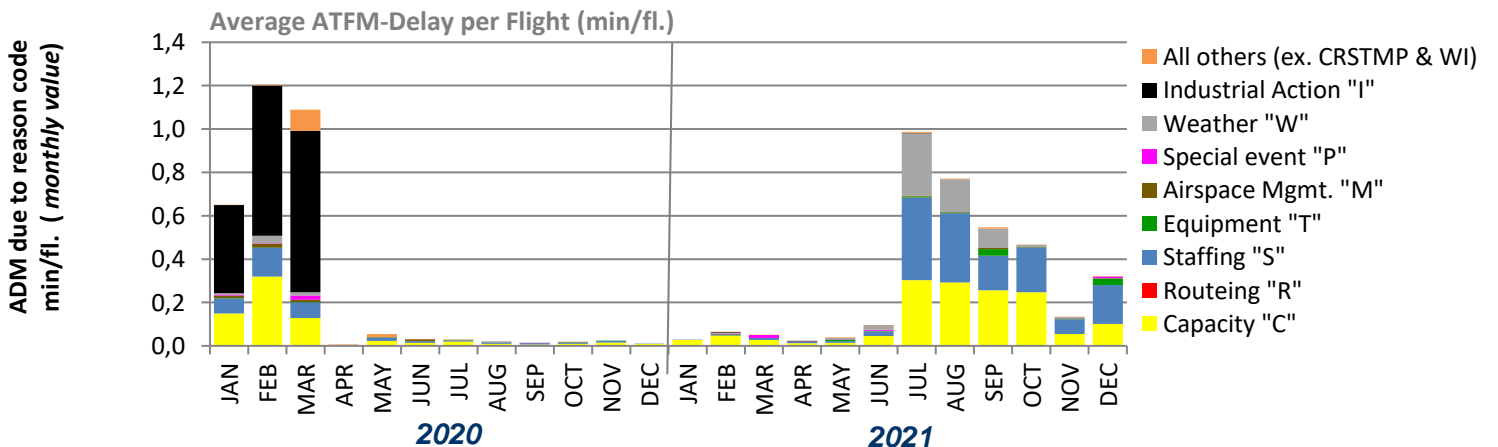
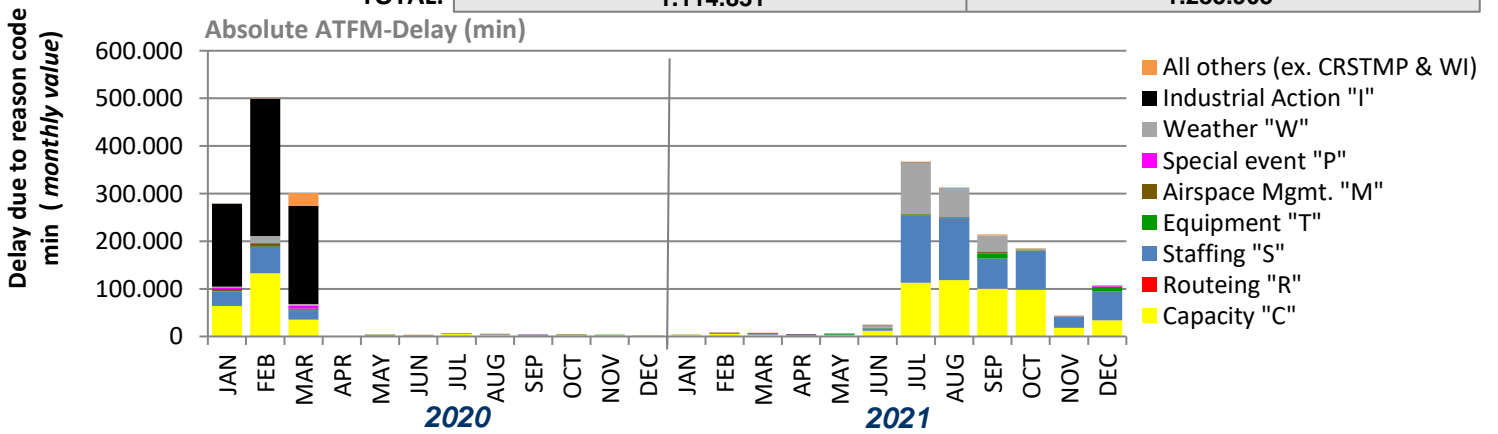


KPI #1: En-route ATFM delay per reason code (FABEC)

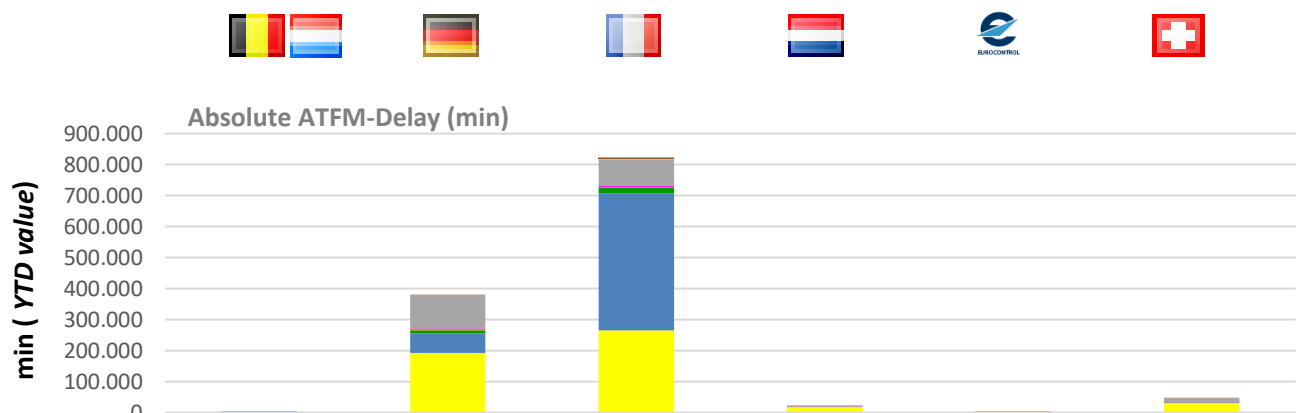


Delay due to reason code:

	2020	2021
Capacity "C"	250.963	511.383
Routeing "R"	0	0
Staffing "S"	114.793	509.666
Equipment "T"	2.321	27.522
Airspace Mgmt. "M"	15.963	7.049
Special event "P"	8.199	6.383
Weather "W"	23.595	215.525
Industrial Action "I"	668.510	1.274
All others (ex. CRSTMP & WI)	30.487	7.103
CRSTMP:	392.239	1.062.003
TOTAL:	1.114.831	1.285.905



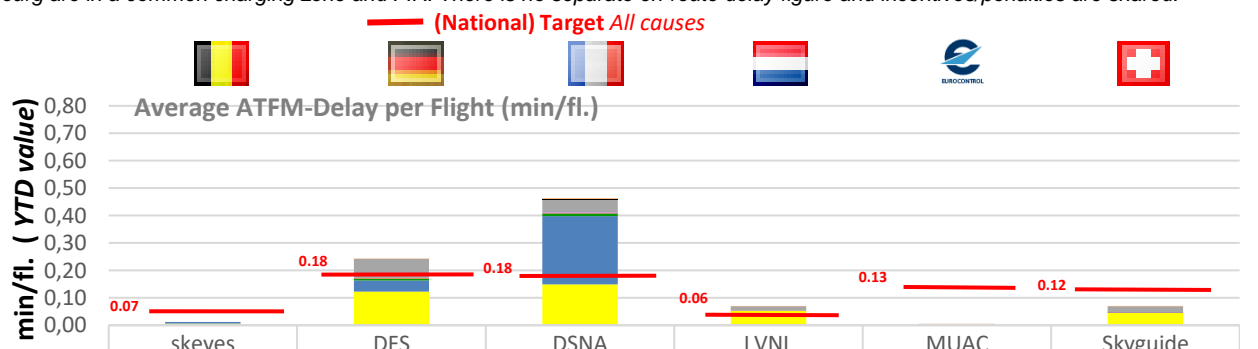
KPI #1: En-route ATFM delay per controlled flight (ANSP)



	skeyes	DFS	DSNA	LVNL	MUAC	Skyguide
All others (ex. CRSTMP & WI)		691	5.603	319	257	233
Industrial Action "I"			1.274			
Weather "W"		108.280	87.019	4.601	306	15.319
Special event "P"		1.675	4.455	189		64
Airspace Mgmt. "M"		4.383	2.059		607	
Equipment "T"		9.860	16.351		781	530
Staffing "S"	2.325	62.917	442.792	580	642	410
Routeing "R"						
Capacity "C"	2.067	192.989	265.105	18.276	1.420	31.526

CRSTMP:	4.392	271.824	730.762	19.045	3.450	32.530
TOTAL:	4.392	380.795	824.658	23.965	4.013	48.082

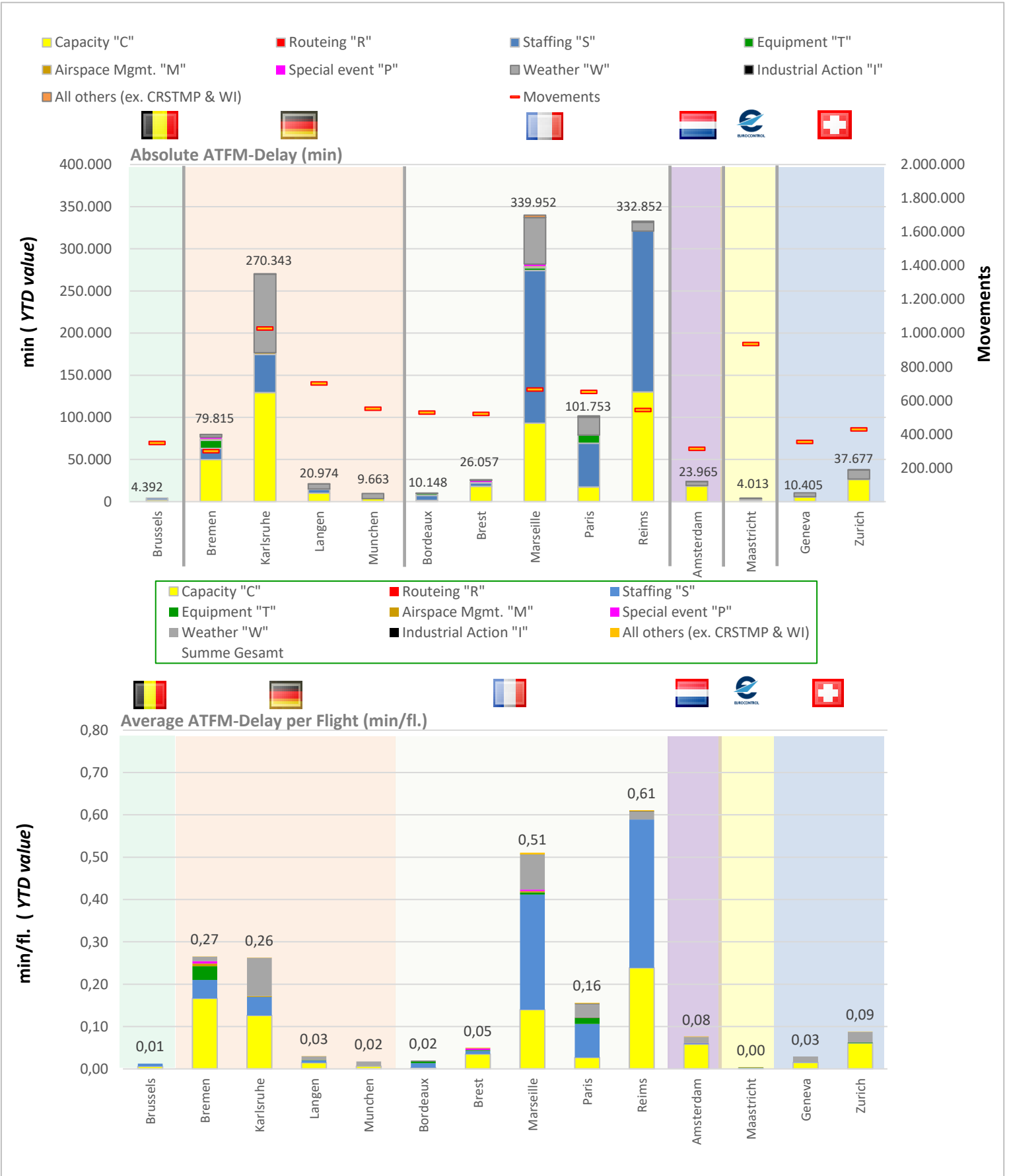
*Belgium and Luxembourg are in a common charging zone and FIR. There is no separate en-route delay figure and incentives/penalties are shared.



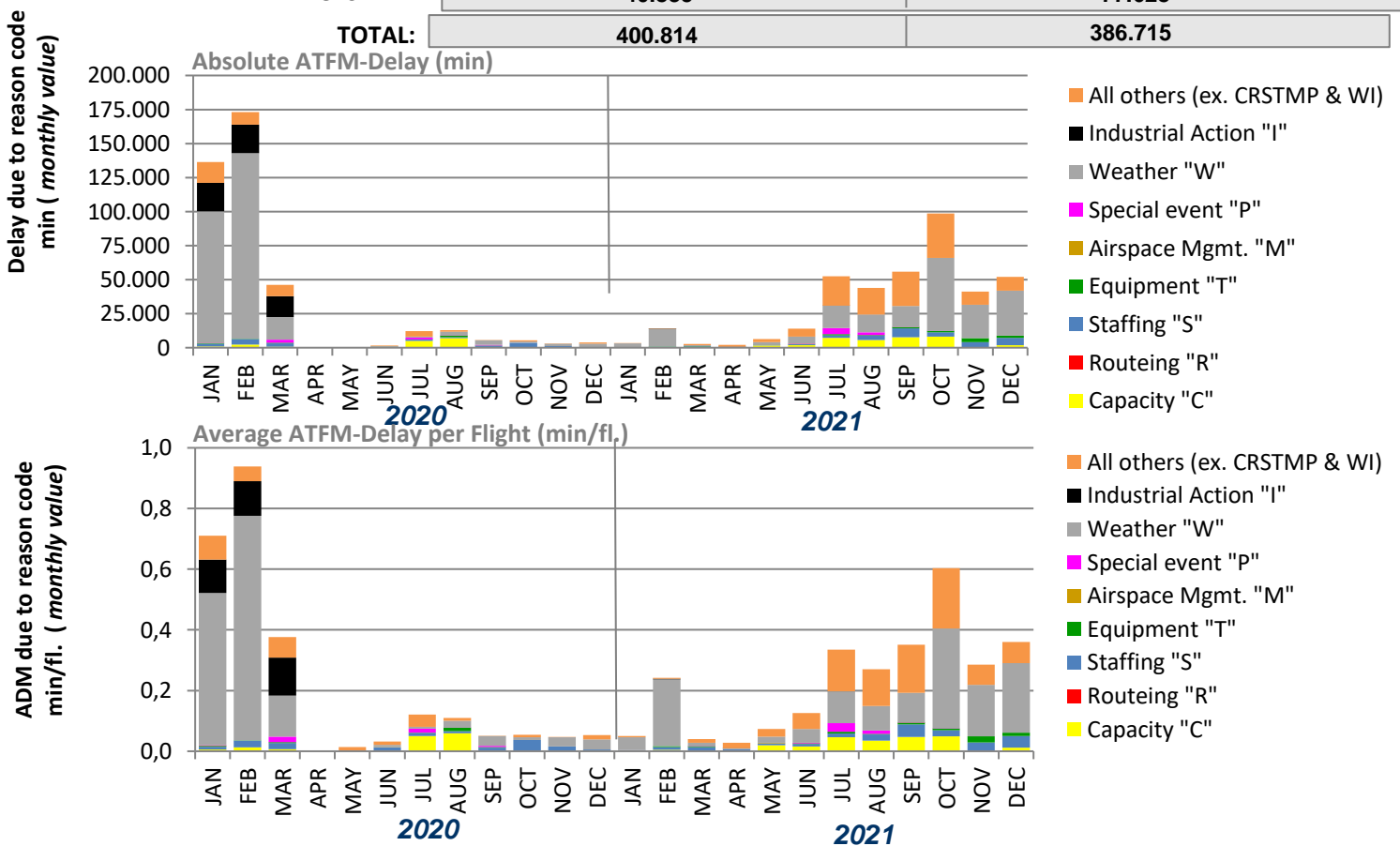
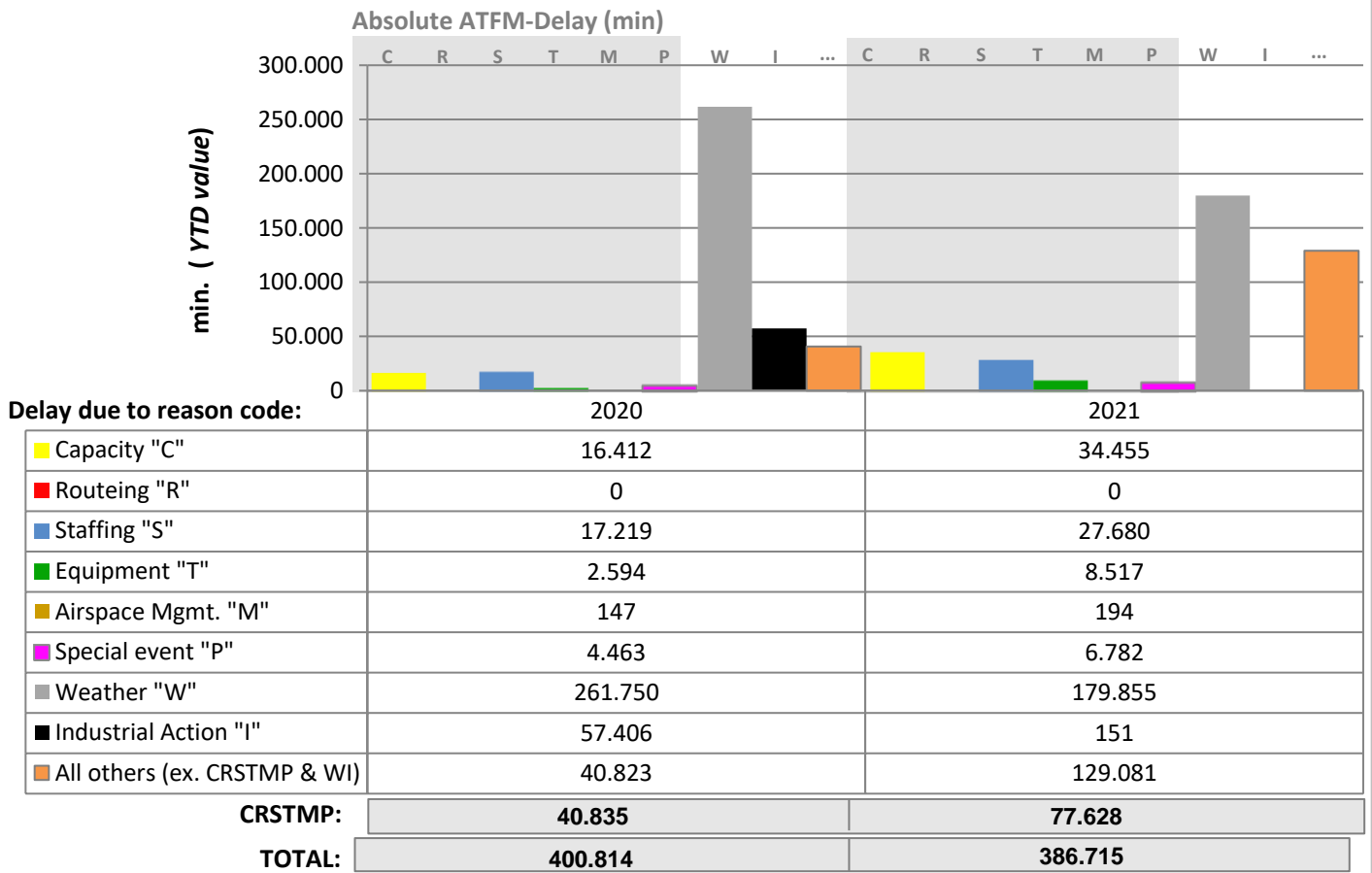
	skeyes	DFS	DSNA	LVNL	MUAC	Skyguide
All others (ex. CRSTMP & WI)		0,00	0,00	0,00	0,00	0,00
Industrial Action "I"			0,00			
Weather "W"		0,07	0,05	0,01	0,00	0,02
Special event "P"		0,00	0,00	0,00		0,00
Airspace Mgmt. "M"		0,00	0,00		0,00	
Equipment "T"		0,01	0,01		0,00	0,00
Staffing "S"	0,01	0,04	0,25	0,00	0,00	0,00
Routeing "R"						
Capacity "C"	0,01	0,12	0,15	0,05	0,00	0,05

CRSTMP:	0,01	0,17	0,41	0,06	0,00	0,05
TOTAL:	0,01	0,24	0,46	0,07	0,00	0,07

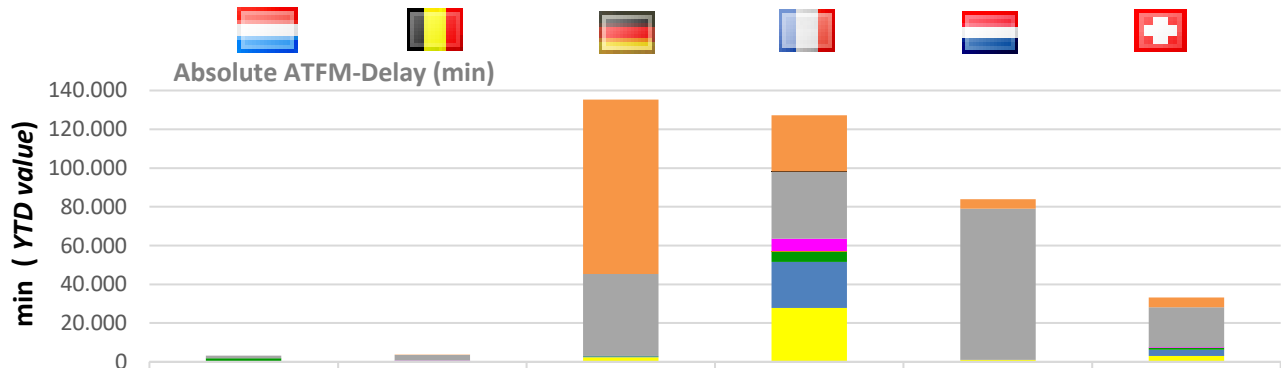
KPI #1: En-route ATFM delay per controlled flight (ACC)



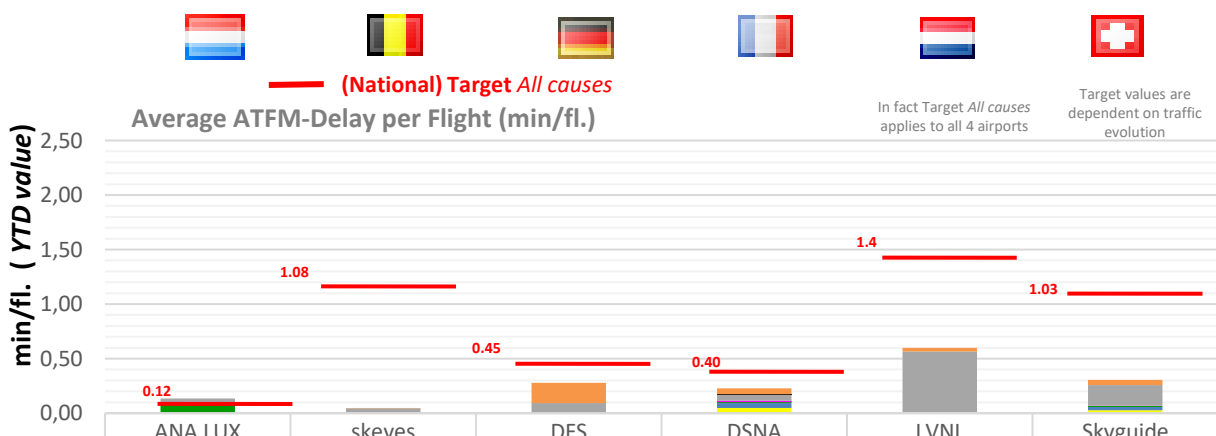
KPI #2: Arrival ATFM delay per reason code (FABEC)



KPI #2: Arrival ATFM delay per controlled flight (ANSP)



	ANA LUX	skeyes	DFS	DSNA	LVNL	Skyguide
All others (ex. CRSTMP & WI)		45	90.043	28.992	4.851	5.150
Industrial Action "I"				151		
Weather "W"	1.369	2.863	42.298	34.602	78.108	20.615
Special event "P"		239		6.362		181
Airspace Mgmt. "M"				194		
Equipment "T"	1.859		100	5.385		1.173
Staffing "S"		315	507	23.733		3.125
Routeing "R"						
Capacity "C"		171	2.390	27.849	1.003	3.042
CRSTMP:	1.859	725	2.997	63.523	1.003	7.521
TOTAL:	3.228	3.633	135.338	127.268	83.962	33.286



	ANA LUX	skeyes	DFS	DSNA	LVNL	Skyguide
All others (ex. CRSTMP & WI)		0,00	0,19	0,05	0,03	0,05
Industrial Action "I"				0,00		
Weather "W"	0,06	0,04	0,09	0,06	0,56	0,19
Special event "P"		0,00	0,00	0,01	0,00	0,00
Airspace Mgmt. "M"				0,00		
Equipment "T"	0,08		0,00	0,01	0,00	0,01
Staffing "S"		0,00	0,00	0,04		0,03
Routeing "R"						
Capacity "C"		0,00	0,00	0,05	0,01	0,03
CRSTMP:	0,08	0,01	0,01	0,11	0,01	0,07
TOTAL:	0,14	0,05	0,28	0,23	0,60	0,31

Glossary

KPI #1:

KPI #1 is set by IR (EU) 2019/317 and is expressed in minutes per flight. The EU-wide targets set for RP3 for this indicator are for 2020: 0.9 min/fl., 2021: 0,35 min/fl., 2022: 0.5 min/fl., 2023: 0.5 min/fl., 2024: 0.5 min/fl.

The targets set at FABEC level are as follows for the indicator 'En-route ATFM delay (all regulation causes) per controlled flight' for **2020**: 3.45 min/fl., **2021**: 0.27 min/fl., **2022**: 0.37 min/fl., **2023**: 0.37 min/fl., **2024**: 0.37 min/fl.

The targets set at FABEC level are as follows for the indicator 'En-route ATFM delay (CRSTMP regulation causes) per controlled flight' for **2020**: n.a., **2021**: n.a., **2022**: 0.24 min/fl., **2023**: 0.24 min/fl., **2024**: 0.24 min/fl.

KPI #2:

KPI #2 is set by IR (EU) 2019/317 and is expressed in minutes per flight. For this indicator, no targets have been defined at EU and FABEC level for RP3. The targets have been set at local level.

Cause	CODE	Guidelines for Application
ATC Capacity	C	En Route: Demand exceeds or complexity reduces declared or expected ATC capacity Airport: Demand exceeds declared or expected ATC capacity.
ATC Industrial Action	I	Reduction in any capacity due to industrial action by ATC staff
ATC Routeings	R	Network solutions / scenarios used to balance demand and capacity
ATC Staffing	S	Unplanned staff shortage reducing expected capacity.
ATC Equipment	T	Reduction of expected or declared capacity due to the non-availability or degradation of equipment used to provide an ATC service.
Accident / Incident	A	Reduction of expected ATC capacity due to an aircraft accident / incident.
Aerodrome Capacity	G	Reduction in declared or expected capacity due to the degradation or non-availability of infrastructure at an airport. e.g. Work in Progress, shortage of aircraft stands etc. Or when demand exceeds expected aerodrome capacity.
Equipment NON ATC- to be Aerodrome Services	E	Reduced capacity due to the degradation or non-availability of support equipment at an airport e.g. Fire Service, De-icing / snow removal equipment or other ground handling equipment.
Industrial Action NON ATC	N	A reduction in expected / planned capacity due to industrial action by non ATC personnel.
Airspace Management	M	Reduction in declared or expected capacity following changes in airspace / route availability due to small scale military activity.
Special Event	P	Reduction in planned, declared or expected capacity or when demand exceeds the above capacities as a result of a major sporting, governmental or social event. It may also be used for ATM system upgrades and transitions. Large multinational military exercises may also use this reason. This category should only be used with prior approval during the planning process.
Weather	W	Reduction in expected capacity due to any weather phenomena. This includes where weather impacts airport infrastructure capacity, but where aerodrome services are operating as planned / expected.
Environmental Issues	V	Reduction in any capacity or when demand exceeds any capacity due to agreed local noise, runway usage or similar procedures. This category should only be used with prior agreement in the planning process.
Other	O	This should only be used in exceptional circumstances when no other category is sufficient. An explanatory ANM remark MUST be given to allow post ops analysis.

CRSTMP:

ATC Capacity (**C**), ATC Routeings (**R**), ATC Staffing (**S**), ATC Equipment (**T**), Airspace Management (**M**), Special Event (**P**); a set of regulation codes which are defined in the Common Charging Scheme Regulation (IR 2019/317) and subject to financial incentive.

Note: Arrival figures (traffic and delay) do only include EBBR and EBLG for Belgium and only EHAM for the Netherlands.

TABLE OF ABBREVIATIONS

ADM - Average en-route ATFM Delay per Movement
ANSP - Air Navigation Service Provider
ATFM - Air Traffic Flow Management
ANM - Aeronautical Notification Message
FABEC - Functional Airspace Block Europe Central

ATM - Air Traffic Management
PRU - Performance Review Unit
YTD - Year to Date value
FPP - FABEC Performance Plan
CODA - Central Office for Delay Analysis

FABEC Performance Report Capacity:

Editor: FABEC PMG

Sources: EUROCONTROL, FABEC ANSPs

Status: December 2021

www.FABEC.eu

Notice

The FABEC PMG has made every effort to ensure that the information and analysis contained in this document are as accurate and complete as possible.

Only information from quoted sources has been used and information relating to named parties has been checked with the parties concerned.

Despite these precautions, should you find any errors or inconsistencies we would be grateful if you could please bring them to the FABEC PMG's attention.