



PERFORMANCE REPORT 2020 - 2024

CAPACITY

August 2021



making the difference

Contents

Description & Analysis	3
FABEC TRAFFIC DEVELOPMENT (en-route)	4
FABEC TRAFFIC DEVELOPMENT (arrival)	6
KPI #1: En-route ATFM delay per controlled flight (FABEC)	8
KPI #2: Arrival ATFM delay per controlled flight (FABEC)	9
KPI #1: En-route ATFM delay per reason code (FABEC)	10
KPI #1: En-route ATFM delay per controlled flight (ANSP)	11
KPI #1: En-route ATFM delay per controlled flight (ACC)	12
KPI #2: Arrival ATFM delay per reason code (FABEC)	13
KPI #2: Arrival ATFM delay per controlled flight (ANSP)	14
Glossary	15

Description & Analysis

Europe

Traffic in August was at 70.6% of August 2019 levels. The high traffic growth during summer has eased. August saw a slight increase in traffic each week. Since July, the network traffic is slightly above the most optimistic scenario of the latest EUROCONTROL traffic scenarios published on 1 June 2021. On average, the network saw 24,635 flights/day. The peak day was 27 August (26,773 flights) with traffic at 73.3% of 2019 levels. Ryanair was the busiest carrier in August with on average 2,318 flights/day, followed by Turkish Airlines (1,320 flight/day), easyJet (1,171 flights/day) and Lufthansa (816 flights/day). Five low-cost carriers were included in the TOP 10 airlines in August 2021. Volotea, Netjets, Transavia France and Loganair are above their 2019 levels.

Traffic has been increasing over the last sixteen weeks and is slightly above the EUROCONTROL's Traffic Scenario 1 shown below. Air traffic throughout Europe was 29.4% down in August 2021 compared to August 2019. Business aviation and all-cargo remained the only segments surpassing 2019 flight levels. Business aviation recorded an increase of 20.1% in August 2021 compared to August 2019 whereas all-cargo was up 6.0%. The charter segment was stable at -15.3%. The traditional and low-cost segments have consistently increased since May, with Low-cost (-33.4%) outpacing Traditional Scheduled (-42.7%) in August 2021 compared with August 2019.

Amsterdam/Schiphol was the busiest airport with 1,066 flights per day followed by IGA Istanbul (1,007), Paris/Charles de Gaulle (951) and Frankfurt/Main (932). Increase at Berlin/Brandenburg airport was mainly due to the closure of Berlin/Tegel airport and operations transferred to Berlin/Brandenburg airport.

There was a total of 789,449 minutes of ATFM delay in August. The flow measures were mainly applied in Marseille ACC, Reims ACC, Athens ACC and at Athens airport. Network departure punctuality dropped to around 74% and arrival punctuality to around 79%. (Source: NM).

Delays from the passengers' point of view

For August 2021, the Central Office for Delay Analysis (CODA) reported that the average delay per flight on departure was 12.2 minutes per flight - an increase of 7.2 minutes per flight compared to August 2020. 14% of the total delay can be attributable to air traffic control. Airlines caused 65% of the total delay, resulting from such issues as technical problems, staff shortages or turnaround times that are too tightly scheduled. Airports caused 5% of the delays while the rest (IATA Code 85,86,71-79,97-99) of around 14% can be allocated to other reasons (Source: CODA Dashboard-08-2021, Date 27/09/2021).

FABEC

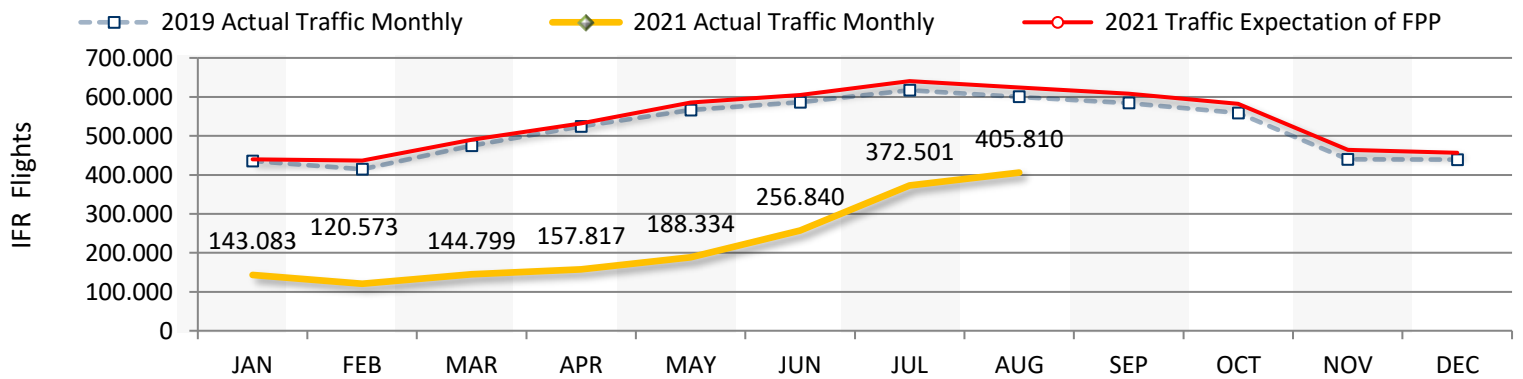
In the FABEC area, traffic decreased by 32.4% in August 2021 compared to the same month in 2019, leading to a 57.6% traffic decrease YTD. Traffic was down in a similar way in all ANSPs, from -36.9% in MUAC, -35.3% in DFS to -29.0 in DSNA or -28.7% in Skyguide. Airport traffic was down to a similar extent (-32.0% in the FABEC area) but with more disparities between ANSPs. Landings decreased by 41.6% in DFS, 32.5% in Skyguide, but "only" 23.1% in DSNA or 22.6% in ANA LUX.

In August 2021, Marseille ACC (101 450 min), Reims ACC (93 006 min) and Karlsruhe UAC (63 895 min), were the units to generate en-route ATFM delays. In Marseille, delays were due to 'Staffing' (67%), 'ATC-Capacity' (24%) and 'Weather' (9%). In Reims, delays were due to 'ATC-Capacity' (49%), 'Staffing' (49%), 'Weather' (2%) and 'Environmental Issues' (1%); in Karlsruhe, 'Weather' (54%), 'ATC-Capacity' (36%), 'Staffing' (9%) and 'Airspace Management' (1%).

Airport ATFM delays were mainly generated in Koeln-Bonn/EDDK (6 934 min), Berlin Brandenburg/EDDB (6 674 min) and Amsterdam Schiphol/EHAM (6 105 min). In Koeln-Bonn, delays were due to 'Aerodrome Capacity' (60%), 'Aerodrome Services' (40%); in Berlin Brandenburg, 'Aerodrome Capacity' (76.6%), 'Aerodrome capacity (ATC)' (11.8%) and 'Weather' (11.6%); in Amsterdam Schiphol, 'Weather' (91.8%) and 'Aerodrome Capacity' (8.2%).

FABEC TRAFFIC DEVELOPMENT (*en-route*)

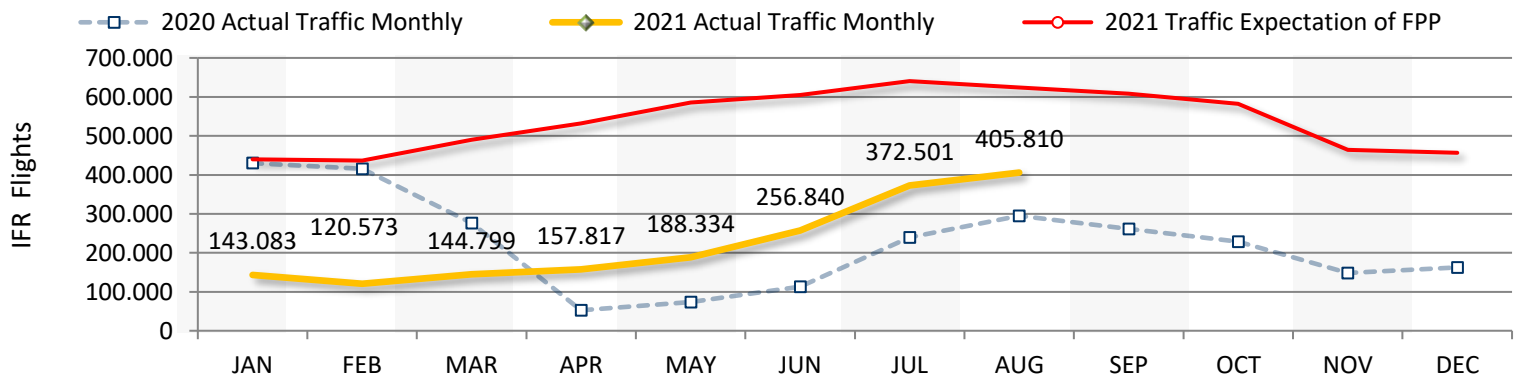
FABEC	JAN	FEB	MAR	APR	MAY	JUN	JUL	AUG	SEP	OCT	NOV	DEC	YTD
2019 Actual Traffic Monthly	435.809	414.272	474.729	524.490	566.051	586.281	617.104	600.261	584.310	558.973	439.854	438.590	4.218.997
2021 Actual Traffic Monthly	143.083	120.573	144.799	157.817	188.334	256.840	372.501	405.810					1.789.757
Growth (%)	-67,2 %	-70,9 %	-69,5 %	-69,9 %	-66,7 %	-56,2 %	-39,6 %	-32,4 %					-57,6 %
2021 Traffic Expectation of FPP	440.186	436.609	490.117	531.721	585.472	604.612	640.569	624.188	608.495	582.617	463.715	456.759	6.465.057
2021 Traffic Evolution (%)	-67,5 %	-72,4 %	-70,5 %	-70,3 %	-67,8 %	-57,5 %	-41,8 %	-35,0 %					
2021 Traffic Cumulated (%)	-67,5 %	-69,9 %	-70,1 %	-70,2 %	-69,6 %	-67,3 %	-62,9 %	-58,9 %					



	JAN	FEB	MAR	APR	MAY	JUN	JUL	AUG	SEP	OCT	NOV	DEC	YTD
skeyes													
2019 Actual Traffic Monthly	46.085	42.458	49.539	53.761	57.702	58.513	62.239	59.274	59.410	57.544	46.709	46.631	429.571
2021 Actual Traffic Monthly	16.463	14.094	16.118	17.943	21.059	28.862	39.735	41.471					195.745
Growth (%)	-64,3 %	-66,8 %	-67,5 %	-66,6 %	-63,5 %	-50,7 %	-36,2 %	-30,0 %					-54,4 %
DFS													
2019 Actual Traffic Monthly	222.009	211.766	240.686	258.289	282.291	286.199	299.444	292.210	291.681	284.915	225.050	223.636	2.092.894
2021 Actual Traffic Monthly	69.223	58.987	73.586	82.028	92.241	121.837	173.210	188.953					860.065
Growth (%)	-68,8 %	-72,1 %	-69,4 %	-68,2 %	-67,3 %	-57,4 %	-42,2 %	-35,3 %					-58,9 %
DSNA													
2019 Actual Traffic Monthly	221.573	209.836	244.322	283.032	302.429	321.951	340.265	329.402	313.806	292.190	221.663	221.576	2.252.810
2021 Actual Traffic Monthly	74.364	60.927	71.495	78.739	101.198	144.886	217.301	233.949					982.859
Growth (%)	-66,4 %	-71,0 %	-70,7 %	-72,2 %	-66,5 %	-55,0 %	-36,1 %	-29,0 %					-56,4 %
LVNL													
2019 Actual Traffic Monthly	46.111	44.366	50.512	53.470	57.492	55.907	57.593	57.195	56.974	57.181	47.564	47.298	422.646
2021 Actual Traffic Monthly	17.808	13.733	16.695	18.430	21.043	25.726	37.108	40.138					190.681
Growth (%)	-61,4 %	-69,0 %	-66,9 %	-65,5 %	-63,4 %	-54,0 %	-35,6 %	-29,8 %					-54,9 %
MUAC													
2019 Actual Traffic Monthly	138.773	129.324	147.712	154.875	164.086	166.793	176.133	173.200	168.761	166.082	137.728	139.287	1.250.896
2021 Actual Traffic Monthly	44.474	34.373	41.453	46.276	52.330	69.124	98.093	109.221					495.344
Growth (%)	-68,0 %	-73,4 %	-71,9 %	-70,1 %	-68,1 %	-58,6 %	-44,3 %	-36,9 %					-60,4 %
skyguide													
2019 Actual Traffic Monthly	89.334	86.268	99.645	110.651	120.991	127.214	133.394	127.821	124.023	115.533	86.141	89.466	895.318
2021 Actual Traffic Monthly	26.405	22.687	28.012	32.619	39.721	54.940	83.886	91.102					379.372
Growth (%)	-70,4 %	-73,7 %	-71,9 %	-70,5 %	-67,2 %	-56,8 %	-37,1 %	-28,7 %					-57,6 %

FABEC TRAFFIC DEVELOPMENT (*en-route*)

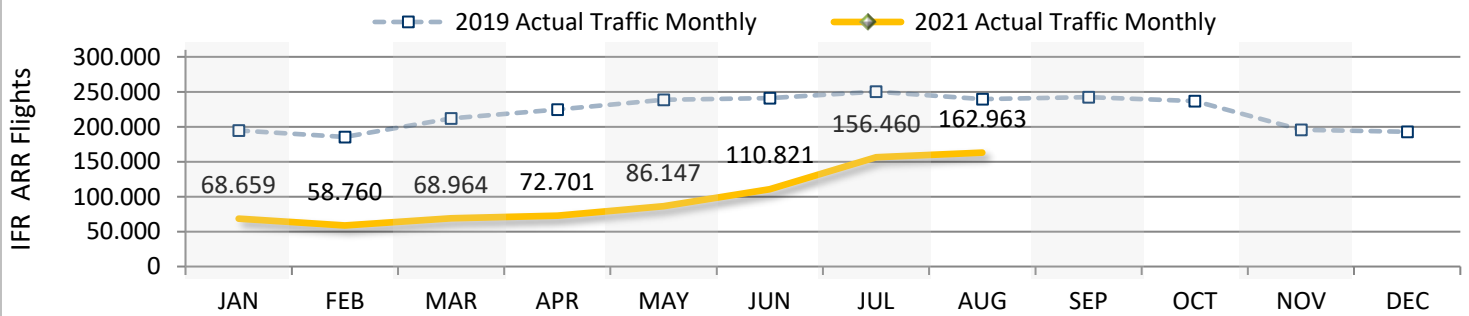
FABEC	JAN	FEB	MAR	APR	MAY	JUN	JUL	AUG	SEP	OCT	NOV	DEC	YTD
2020 Actual Traffic Monthly	430.110	415.561	276.631	52.526	73.371	113.300	239.693	294.852	261.378	228.453	147.896	162.450	1.896.044
2021 Actual Traffic Monthly	143.083	120.573	144.799	157.817	188.334	256.840	372.501	405.810					1.789.757
Growth (%)	-66,7 %	-71,0 %	-47,7 %	200,5 %	156,7 %	126,7 %	55,4 %	37,6 %					-5,6 %
2021 Traffic Expectation of FPP	440.186	436.609	490.117	531.721	585.472	604.612	640.569	624.188	608.495	582.617	463.715	456.759	6.465.057
2021 Traffic Evolution (%)	-67,5 %	-72,4 %	-70,5 %	-70,3 %	-67,8 %	-57,5 %	-41,8 %	-35,0 %					
2021 Traffic Cumulated (%)	-67,5 %	-69,9 %	-70,1 %	-70,2 %	-69,6 %	-67,3 %	-62,9 %	-58,9 %					



	JAN	FEB	MAR	APR	MAY	JUN	JUL	AUG	SEP	OCT	NOV	DEC	YTD
skeyes													
2020 Actual Traffic Monthly	44.865	43.754	30.860	7.531	9.492	13.158	26.573	29.137	25.192	22.506	17.536	19.339	205.370
2021 Actual Traffic Monthly	16.463	14.094	16.118	17.943	21.059	28.862	39.735	41.471					195.745
Growth (%)	-63,3 %	-67,8 %	-47,8 %	138,3 %	121,9 %	119,3 %	49,5 %	42,3 %					-4,7 %
DFS													
2020 Actual Traffic Monthly	218.493	209.352	141.583	32.194	42.441	60.990	115.966	139.327	132.000	118.171	77.513	79.398	960.346
2021 Actual Traffic Monthly	69.223	58.987	73.586	82.028	92.241	121.837	173.210	188.953					860.065
Growth (%)	-68,3 %	-71,8 %	-48,0 %	154,8 %	117,3 %	99,8 %	49,4 %	35,6 %					-10,4 %
DSNA													
2020 Actual Traffic Monthly	217.787	213.859	140.091	19.006	27.568	49.864	131.897	166.442	134.236	111.919	69.265	83.459	966.514
2021 Actual Traffic Monthly	74.364	60.927	71.495	78.739	101.198	144.886	217.301	233.949					982.859
Growth (%)	-65,9 %	-71,5 %	-49,0 %	314,3 %	267,1 %	190,6 %	64,8 %	40,6 %					1,7 %
LVNL													
2020 Actual Traffic Monthly	46.552	44.046	32.102	6.404	9.188	12.648	22.853	30.023	28.650	25.096	19.150	19.934	203.816
2021 Actual Traffic Monthly	17.808	13.733	16.695	18.430	21.043	25.726	37.108	40.138					190.681
Growth (%)	-61,7 %	-68,8 %	-48,0 %	187,8 %	129,0 %	103,4 %	62,4 %	33,7 %					-6,4 %
MUAC													
2020 Actual Traffic Monthly	133.754	127.979	91.834	18.524	24.874	32.882	65.762	86.306	79.956	71.184	47.963	51.870	581.915
2021 Actual Traffic Monthly	44.474	34.373	41.453	46.276	52.330	69.124	98.093	109.221					495.344
Growth (%)	-66,7 %	-73,1 %	-54,9 %	149,8 %	110,4 %	110,2 %	49,2 %	26,6 %					-14,9 %
skyguide													
2020 Actual Traffic Monthly	90.405	88.622	52.617	8.004	11.569	20.805	50.662	62.083	51.333	43.305	25.675	30.073	384.767
2021 Actual Traffic Monthly	26.405	22.687	28.012	32.619	39.721	54.940	83.886	91.102					379.372
Growth (%)	-70,8 %	-74,4 %	-46,8 %	307,5 %	243,3 %	164,1 %	65,6 %	46,7 %					-1,4 %

FABEC TRAFFIC DEVELOPMENT (*arrival*)

FABEC	JAN	FEB	MAR	APR	MAY	JUN	JUL	AUG	SEP	OCT	NOV	DEC	YTD
2019 Actual Traffic Monthly	194.850	185.420	211.796	224.471	238.490	240.788	250.186	239.483	242.195	236.830	195.678	192.743	1.785.484
2021 Actual Traffic Monthly	68.659	58.760	68.964	72.701	86.147	110.821	156.460	162.963					785.475
Growth (%)	-64,8 %	-68,3 %	-67,4 %	-67,6 %	-63,9 %	-54,0 %	-37,5 %	-32,0 %					-56,0 %



	JAN	FEB	MAR	APR	MAY	JUN	JUL	AUG	SEP	OCT	NOV	DEC	YTD
ANA LUX													
2019 Actual Traffic Monthly	2.728	2.640	3.007	3.285	3.451	3.420	3.410	3.160	3.445	3.466	3.150	3.022	25.101
2021 Actual Traffic Monthly	1.307	1.097	1.270	1.451	1.677	1.957	2.362	2.447					13.568
Growth (%)	-52,1 %	-58,4 %	-57,8 %	-55,8 %	-51,4 %	-42,8 %	-30,7 %	-22,6 %					-45,9 %

	skeyes												YTD
2019 Actual Traffic Monthly	9.804	8.825	10.293	11.083	11.763	11.678	12.607	12.086	12.016	11.632	10.315	9.981	88.139
2021 Actual Traffic Monthly	4.154	3.655	4.074	4.379	5.095	6.322	8.419	8.799					44.897
Growth (%)	-57,6 %	-58,6 %	-60,4 %	-60,5 %	-56,7 %	-45,9 %	-33,2 %	-27,2 %					-49,1 %

	DFS												YTD
2019 Actual Traffic Monthly	78.274	75.894	85.673	88.848	96.254	95.027	98.049	95.422	98.321	97.898	79.529	76.266	713.441
2021 Actual Traffic Monthly	20.815	18.158	23.398	25.886	28.960	36.973	52.200	55.684					262.074
Growth (%)	-73,4 %	-76,1 %	-72,7 %	-70,9 %	-69,9 %	-61,1 %	-46,8 %	-41,6 %					-63,3 %

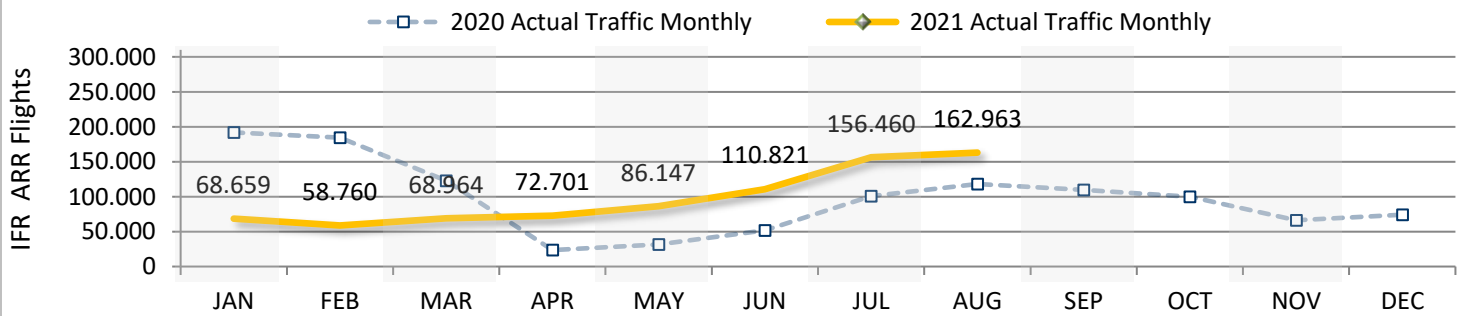
	DSNA												YTD
2019 Actual Traffic Monthly	66.766	63.317	73.401	81.023	84.477	88.656	92.799	86.055	86.206	81.851	67.332	66.631	636.494
2021 Actual Traffic Monthly	30.058	26.603	29.318	28.379	35.836	47.349	65.705	66.191					329.439
Growth (%)	-55,0 %	-58,0 %	-60,1 %	-65,0 %	-57,6 %	-46,6 %	-29,2 %	-23,1 %					-48,2 %

	LVNL												YTD
2019 Actual Traffic Monthly	18.998	18.021	20.363	21.455	22.973	22.330	22.933	23.046	22.639	22.777	19.390	19.628	170.119
2021 Actual Traffic Monthly	7.583	5.531	6.437	7.215	8.290	10.212	15.217	16.532					77.017
Growth (%)	-60,1 %	-69,3 %	-68,4 %	-66,4 %	-63,9 %	-54,3 %	-33,6 %	-28,3 %					-54,7 %

	skyguide												YTD
2019 Actual Traffic Monthly	18.280	16.723	19.059	18.777	19.572	19.677	20.388	19.714	19.568	19.206	15.962	17.215	152.190
2021 Actual Traffic Monthly	4.742	3.716	4.467	5.391	6.289	8.008	12.557	13.310					58.480
Growth (%)	-74,1 %	-77,8 %	-76,6 %	-71,3 %	-67,9 %	-59,3 %	-38,4 %	-32,5 %					-61,6 %

FABEC TRAFFIC DEVELOPMENT (*arrival*)

FABEC	JAN	FEB	MAR	APR	MAY	JUN	JUL	AUG	SEP	OCT	NOV	DEC	YTD
2020 Actual Traffic Monthly	191.890	184.251	122.668	23.552	31.760	51.750	100.748	117.893	109.808	99.745	66.007	74.203	824.512
2021 Actual Traffic Monthly	68.659	58.760	68.964	72.701	86.147	110.821	156.460	162.963					785.475
Growth (%)	-64,2 %	-68,1 %	-43,8 %	208,7 %	171,2 %	114,1 %	55,3 %	38,2 %					-4,7 %



	JAN	FEB	MAR	APR	MAY	JUN	JUL	AUG	SEP	OCT	NOV	DEC	YTD
ANA LUX													
2020 Actual Traffic Monthly	2.881	2.739	1.943	563	694	1.112	1.856	1.881	1.808	1.778	1.456	1.476	13.669
2021 Actual Traffic Monthly	1.307	1.097	1.270	1.451	1.677	1.957	2.362	2.447					13.568
Growth (%)	-54,6 %	-59,9 %	-34,6 %	157,7 %	141,6 %	76,0 %	27,3 %	30,1 %					-0,7 %

	skeyes												YTD
2020 Actual Traffic Monthly	9.672	9.405	6.820	2.284	2.770	3.248	5.434	5.647	4.944	4.860	4.195	4.738	45.280
2021 Actual Traffic Monthly	4.154	3.655	4.074	4.379	5.095	6.322	8.419	8.799					44.897
Growth (%)	-57,1 %	-61,1 %	-40,3 %	91,7 %	83,9 %	94,6 %	54,9 %	55,8 %					-0,8 %

	DFS												YTD
2020 Actual Traffic Monthly	75.120	72.932	48.729	10.990	13.307	19.202	34.829	39.685	39.172	36.662	24.273	23.968	314.794
2021 Actual Traffic Monthly	20.815	18.158	23.398	25.886	28.960	36.973	52.200	55.684					262.074
Growth (%)	-72,3 %	-75,1 %	-52,0 %	135,5 %	117,6 %	92,5 %	49,9 %	40,3 %					-16,7 %

	DSNA												YTD
2020 Actual Traffic Monthly	67.407	64.707	41.888	6.207	9.979	20.145	42.434	49.570	44.825	39.774	24.103	30.323	302.337
2021 Actual Traffic Monthly	30.058	26.603	29.318	28.379	35.836	47.349	65.705	66.191					329.439
Growth (%)	-55,4 %	-58,9 %	-30,0 %	357,2 %	259,1 %	135,0 %	54,8 %	33,5 %					9,0 %

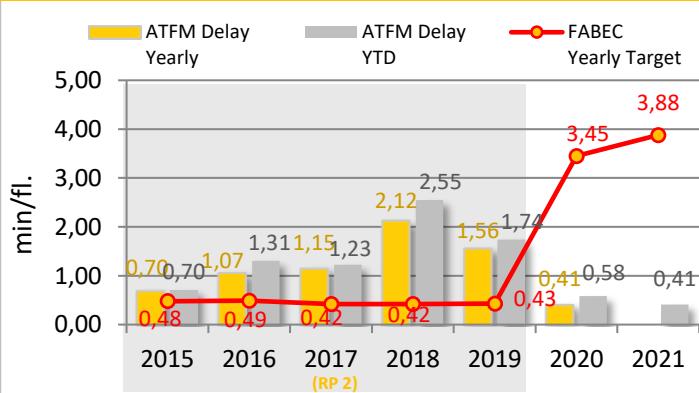
	LVNL												YTD
2020 Actual Traffic Monthly	19.188	17.938	12.953	2.274	3.146	4.383	8.362	12.014	11.506	10.112	7.696	8.300	80.258
2021 Actual Traffic Monthly	7.583	5.531	6.437	7.215	8.290	10.212	15.217	16.532					77.017
Growth (%)	-60,5 %	-69,2 %	-50,3 %	217,3 %	163,5 %	133,0 %	82,0 %	37,6 %					-4,0 %

	skyguide												YTD
2020 Actual Traffic Monthly	17.622	16.530	10.335	1.234	1.864	3.660	7.833	9.096	7.553	6.559	4.284	5.398	68.174
2021 Actual Traffic Monthly	4.742	3.716	4.467	5.391	6.289	8.008	12.557	13.310					58.480
Growth (%)	-73,1 %	-77,5 %	-56,8 %	336,9 %	237,4 %	118,8 %	60,3 %	46,3 %					-14,2 %

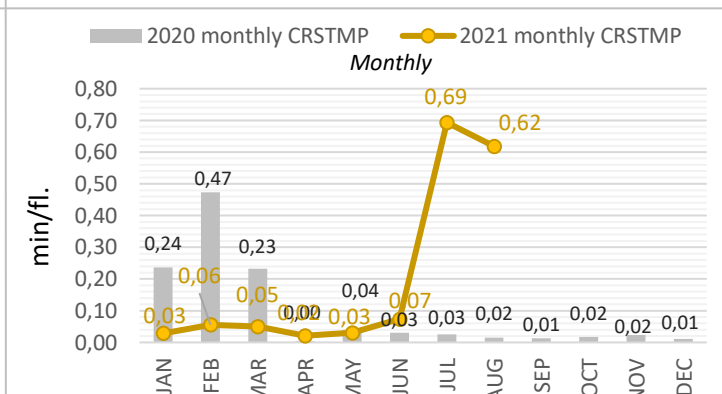
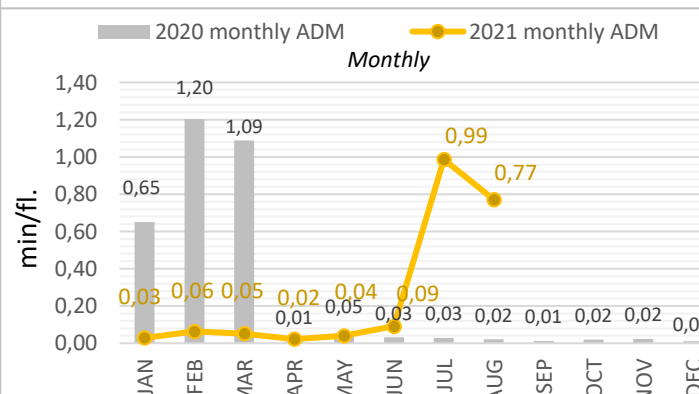
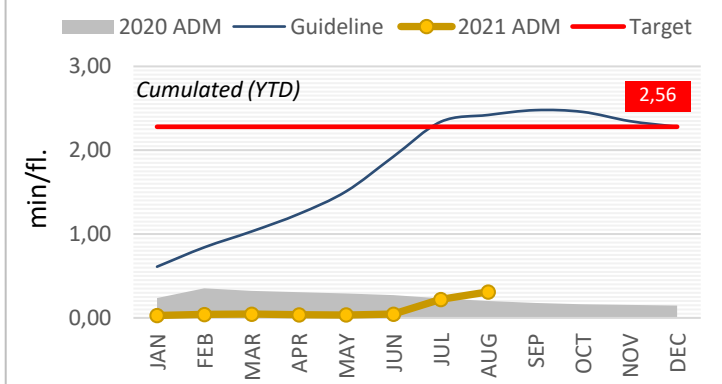
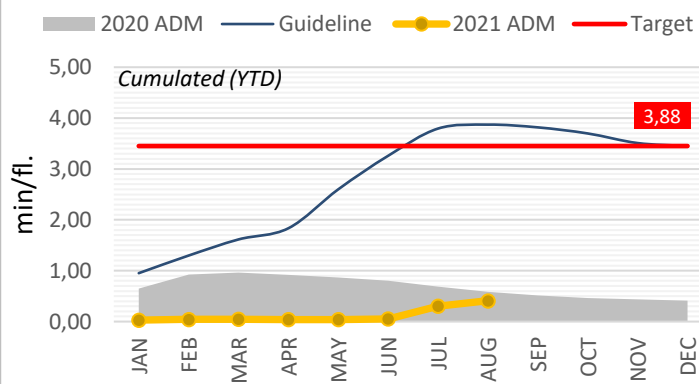
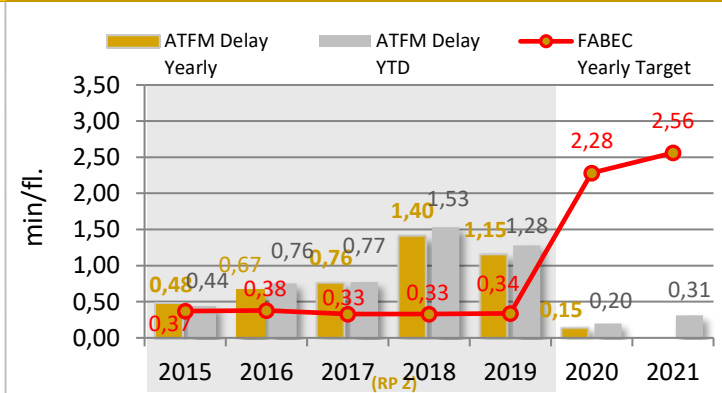
KPI #1: En-route ATFM delay per controlled flight (FABEC)

	YTD 2021	YTD 2020	YTD 2021	YTD 2020
En-route Delay All causes	0,41	0,58	En-route Delay CRSTMP causes	0,31
FABEC Target (yearly value)	3,88		FABEC Target (yearly value)	2,56
Guideline	3,87		Guideline	2,42
Minute ('000) ALL causes	734	1.102	Minute ('000) CRSTMP causes	555
Diff. 2021 - 2020	- 33,4 %		Diff. 2021 - 2020	+ 46 %
Traffic ('000)	1.790	1.896	<i>Potential savings (*) due to underbid the delay Target</i>	
Diff. 2021 - 2020	- 5,6 %		<i>(all Causes) in Mio EURO (YTD)</i> ▶ + 0,01	
<small>* Cost of ATFM-delay per min = 87 €</small>				

All Delay Causes



CRSTMP Delay Causes

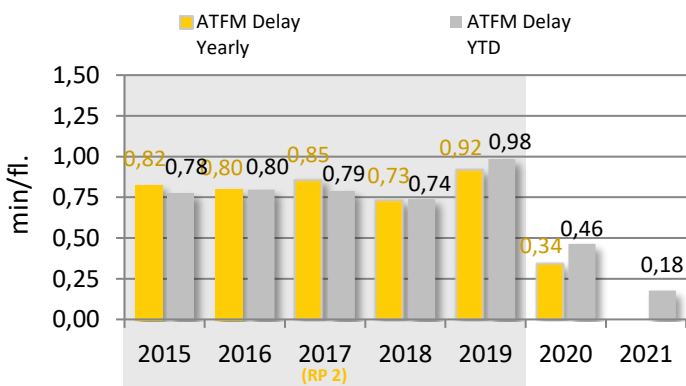


The guideline for the en-route ATFM delay per movement is a basic cumulative extrapolation of the previous three years monthly allocation and is designed to give an impression, how the YTD figures should be, in order to reach the yearly 2021 published targets (3,88 min per flight for all delay causes and 2,56 min per flight for the delay causes CRSTMP). It should be noted that the FPP is still being coordinated and it is therefore very likely that the target value will be adjusted.

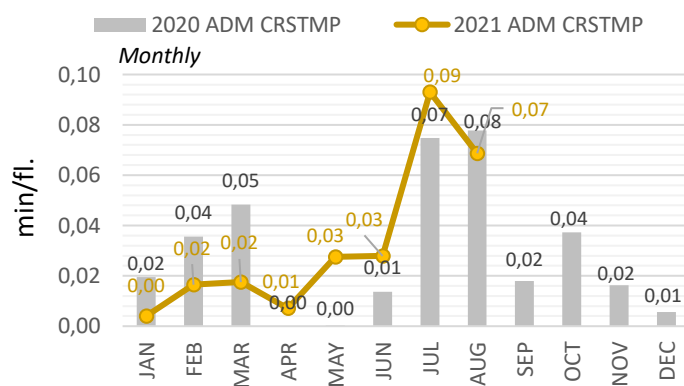
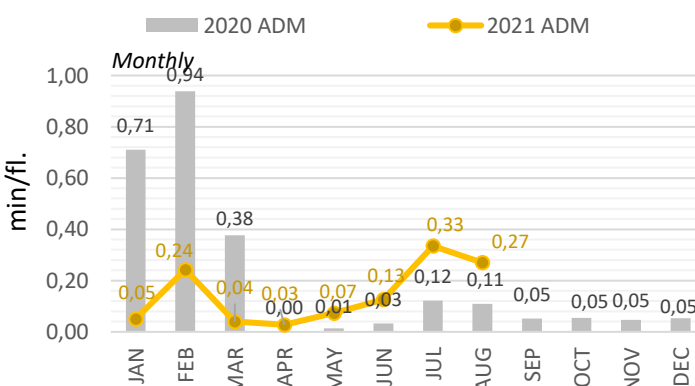
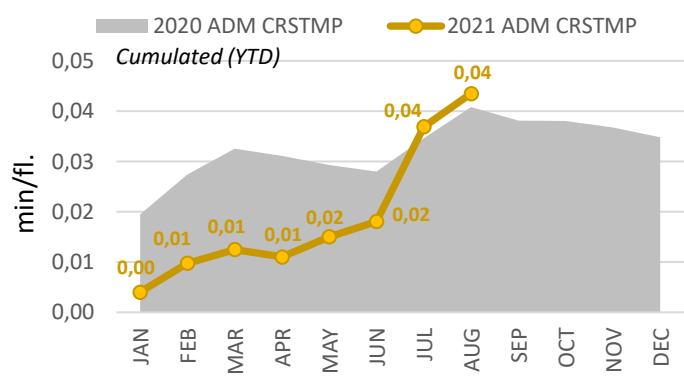
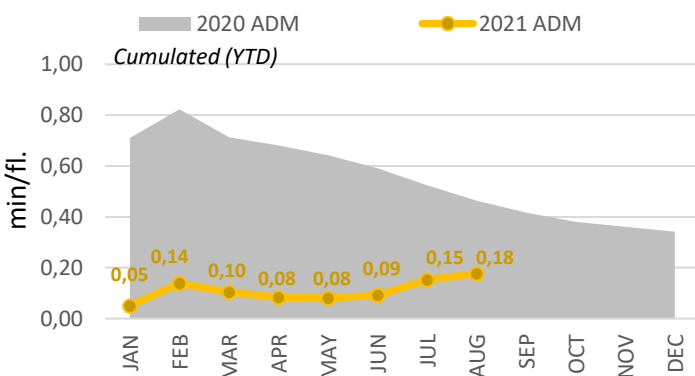
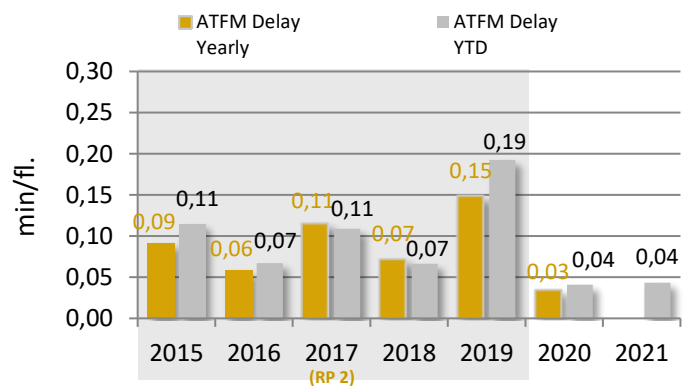
KPI #2: Arrival ATFM delay per controlled flight (FABEC)

	YTD 2021	YTD 2020		YTD 2021	YTD 2020
Arrival Delay All causes	0,18	0,46	Arrival Delay CRSTMP causes	0,04	0,04
<i>Diff. 2021 - 2020</i>	- 62 %		<i>Diff. 2021 - 2020</i>	+ 7 %	
Minute ('000) ALL causes	139	383	Minute ('000) CRSTMP causes	34	34
<i>Diff. 2021 - 2020</i>	- 64 %		<i>Diff. 2021 - 2020</i>	+ 2 %	
Traffic ('000)	785	825			
<i>Diff. 2021 - 2020</i>	- 4,7 %				

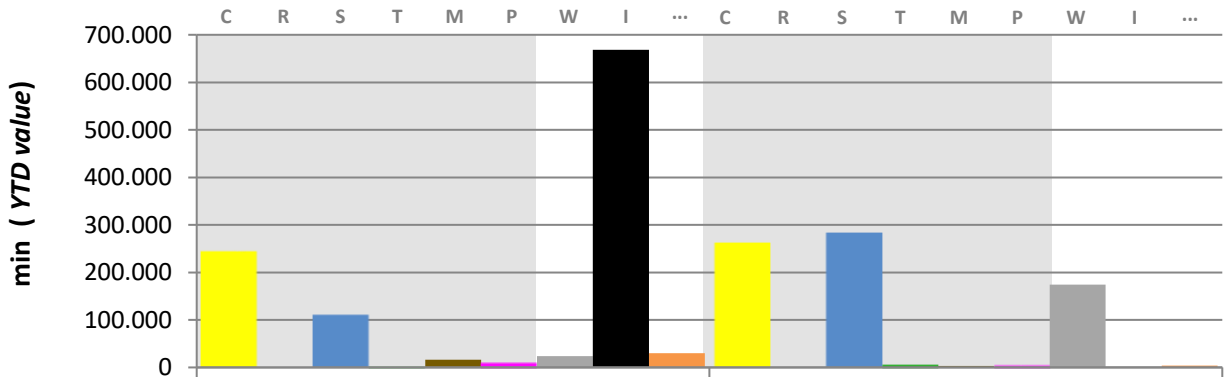
All Delay Causes



CRSTMP Delay Causes

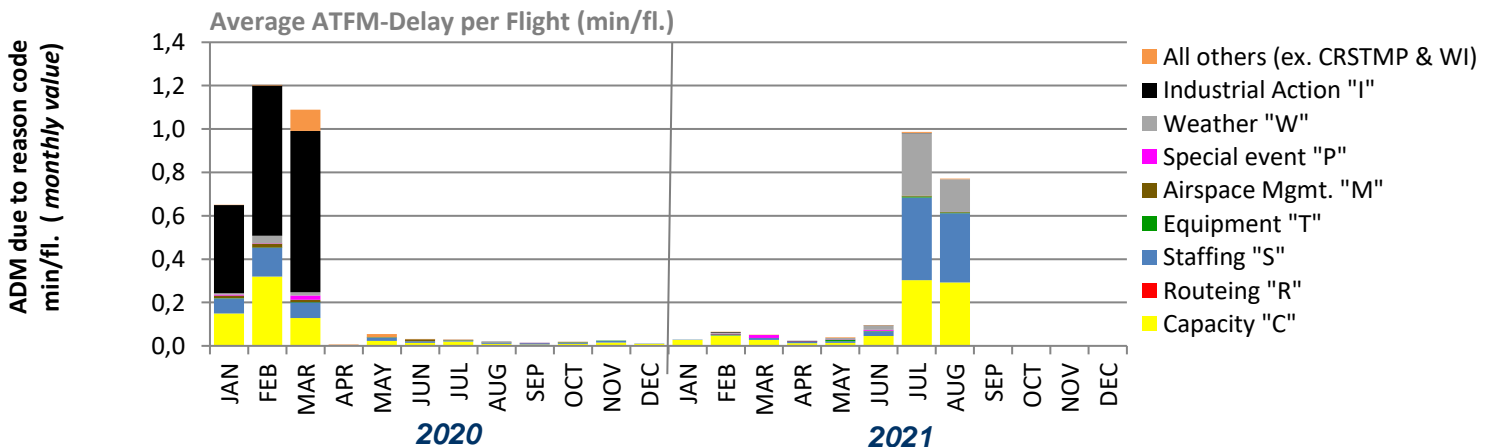
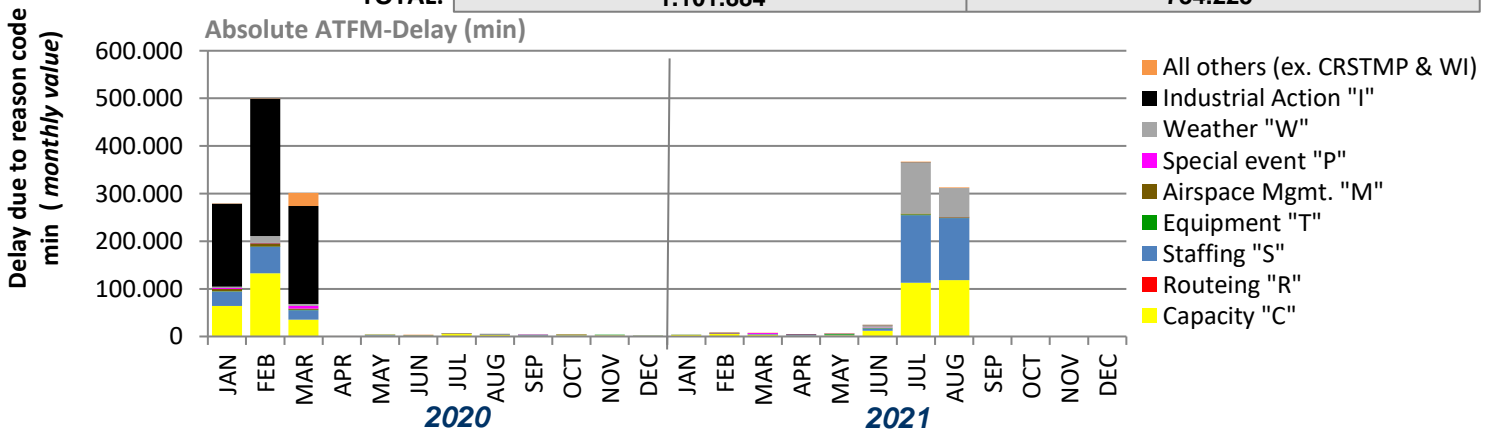


KPI #1: En-route ATFM delay per reason code (FABEC)

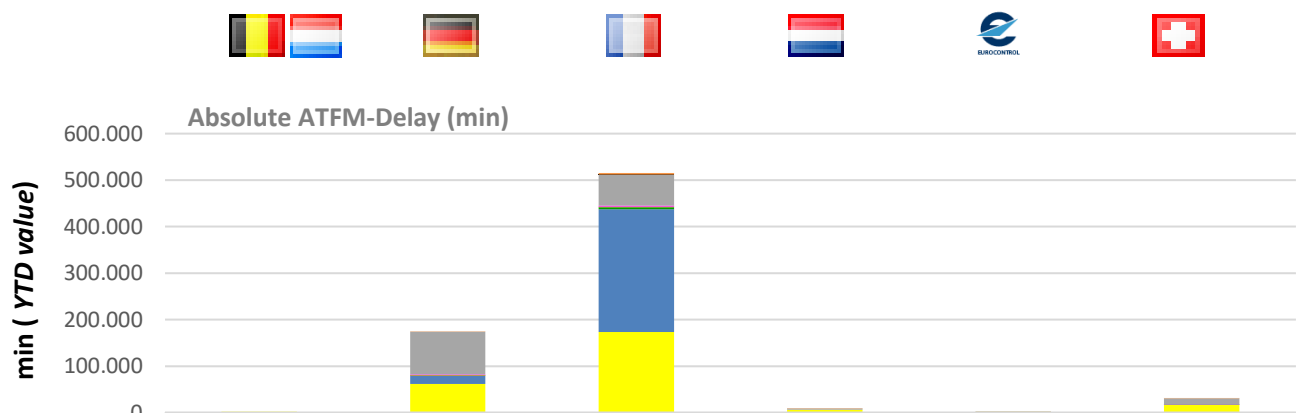


Delay due to reason code:

	2020	2021
Capacity "C"	243.494	261.247
Routeing "R"	0	0
Staffing "S"	110.442	281.502
Equipment "T"	1.768	5.296
Airspace Mgmt. "M"	15.962	3.481
Special event "P"	8.136	3.602
Weather "W"	23.595	174.056
Industrial Action "I"	668.510	1.274
All others (ex. CRSTMP & WI)	29.977	3.767
CRSTMP:	379.802	555.128
TOTAL:	1.101.884	734.225



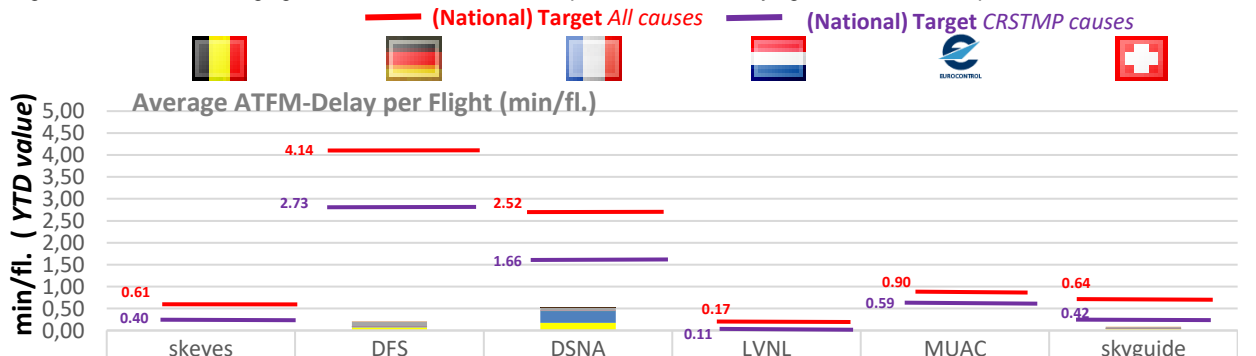
KPI #1: En-route ATFM delay per controlled flight (ANSP)



	skeyes	DFS	DSNA	LVNL	MUAC	skyguide
All others (ex. CRSTMP & WI)		139	3.401	81		146
Industrial Action "I"			1.274			
Weather "W"		92.278	65.522	2.804	84	13.368
Special event "P"		1.393	2.145			64
Airspace Mgmt. "M"		1.399	1.720		362	
Equipment "T"		27	4.309		781	179
Staffing "S"		17.488	263.658		298	58
Routeing "R"						
Capacity "C"	2.067	61.879	173.506	6.199	448	17.148

CRSTMP:	2.067	82.186	445.338	6.199	1.889	17.449
TOTAL:	2.067	174.603	515.535	9.084	1.973	30.963

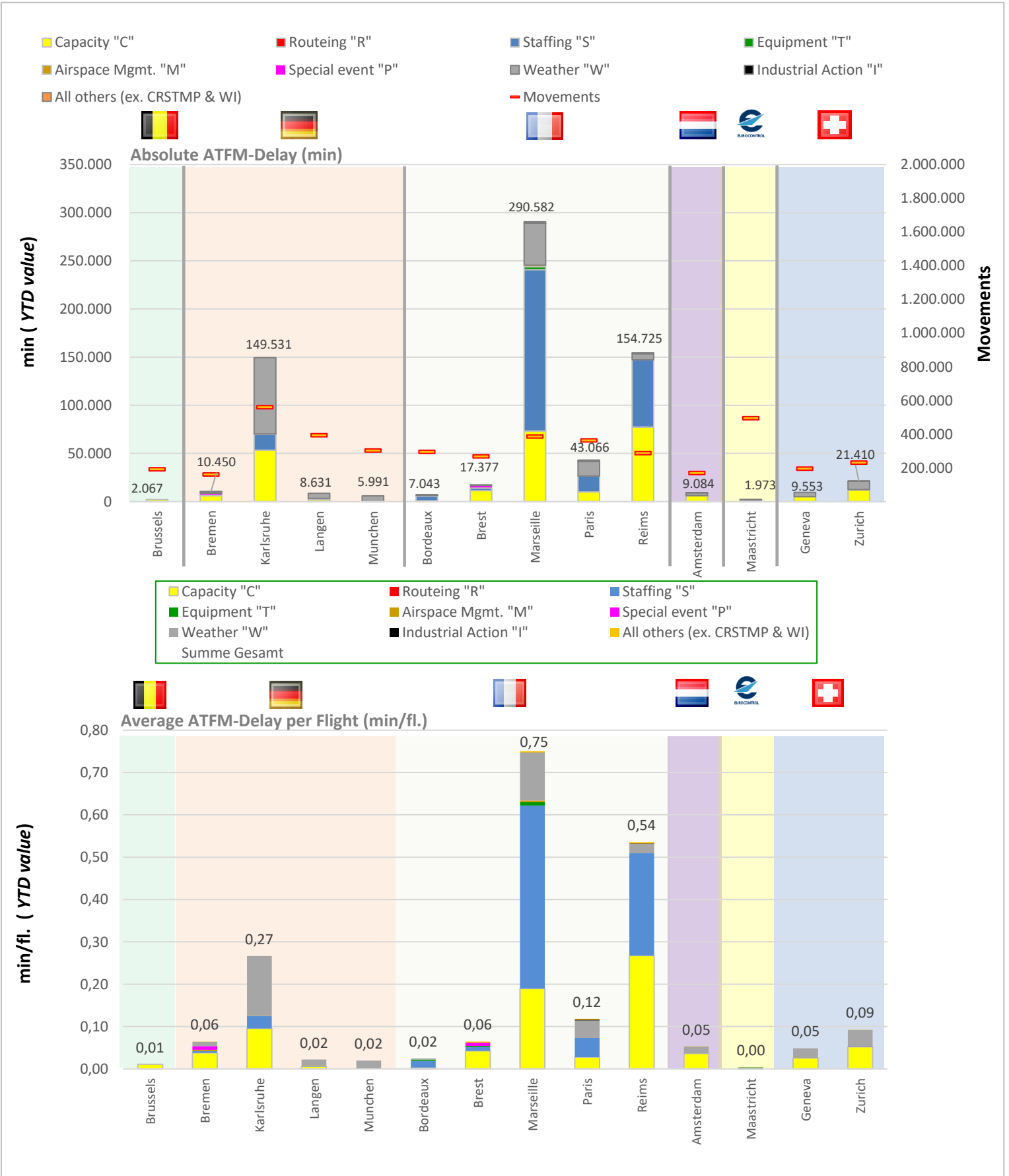
*Belgium and Luxembourg are in a common charging zone and FIR. There is no separate en-route delay figure and incentives/penalties are shared.



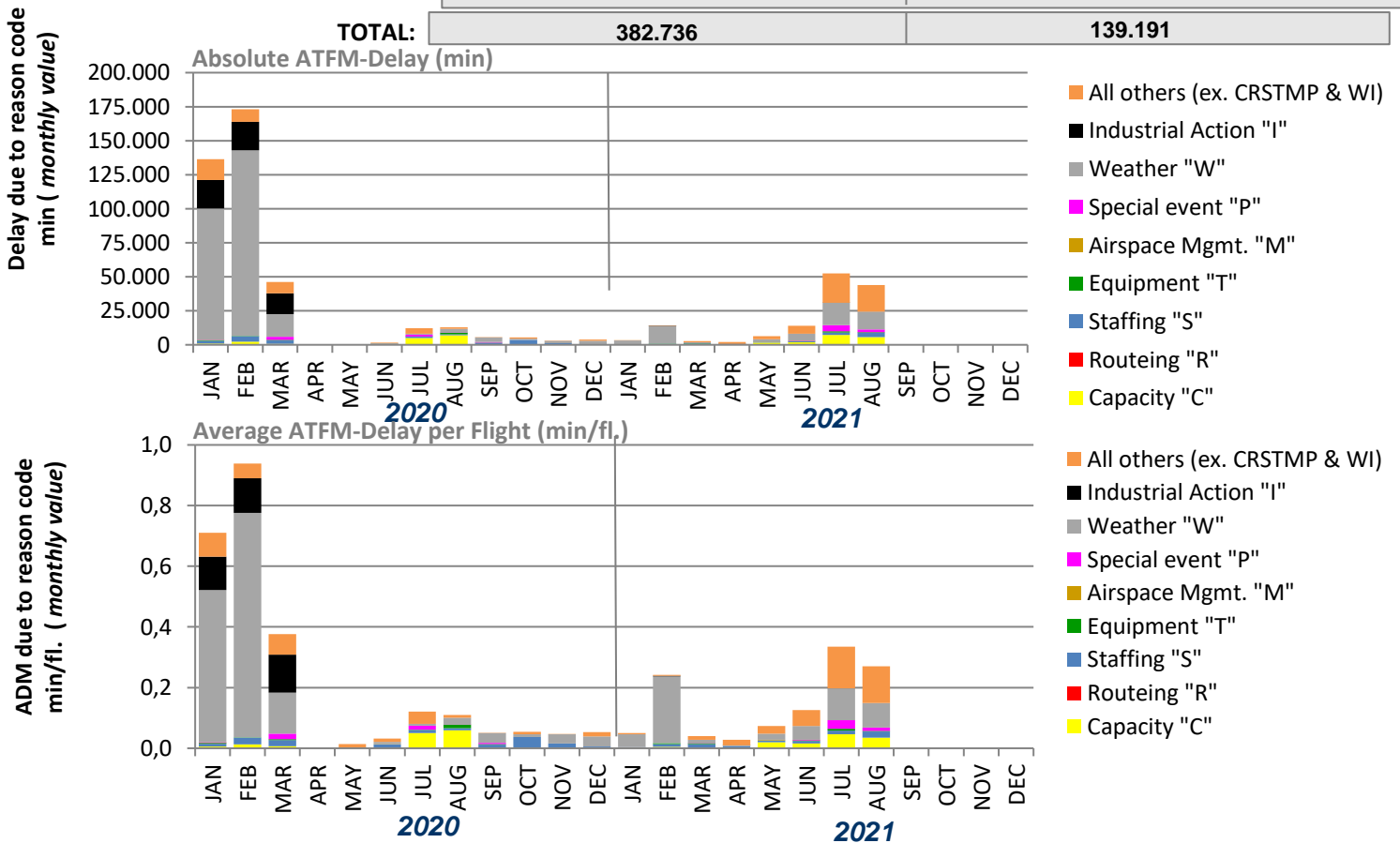
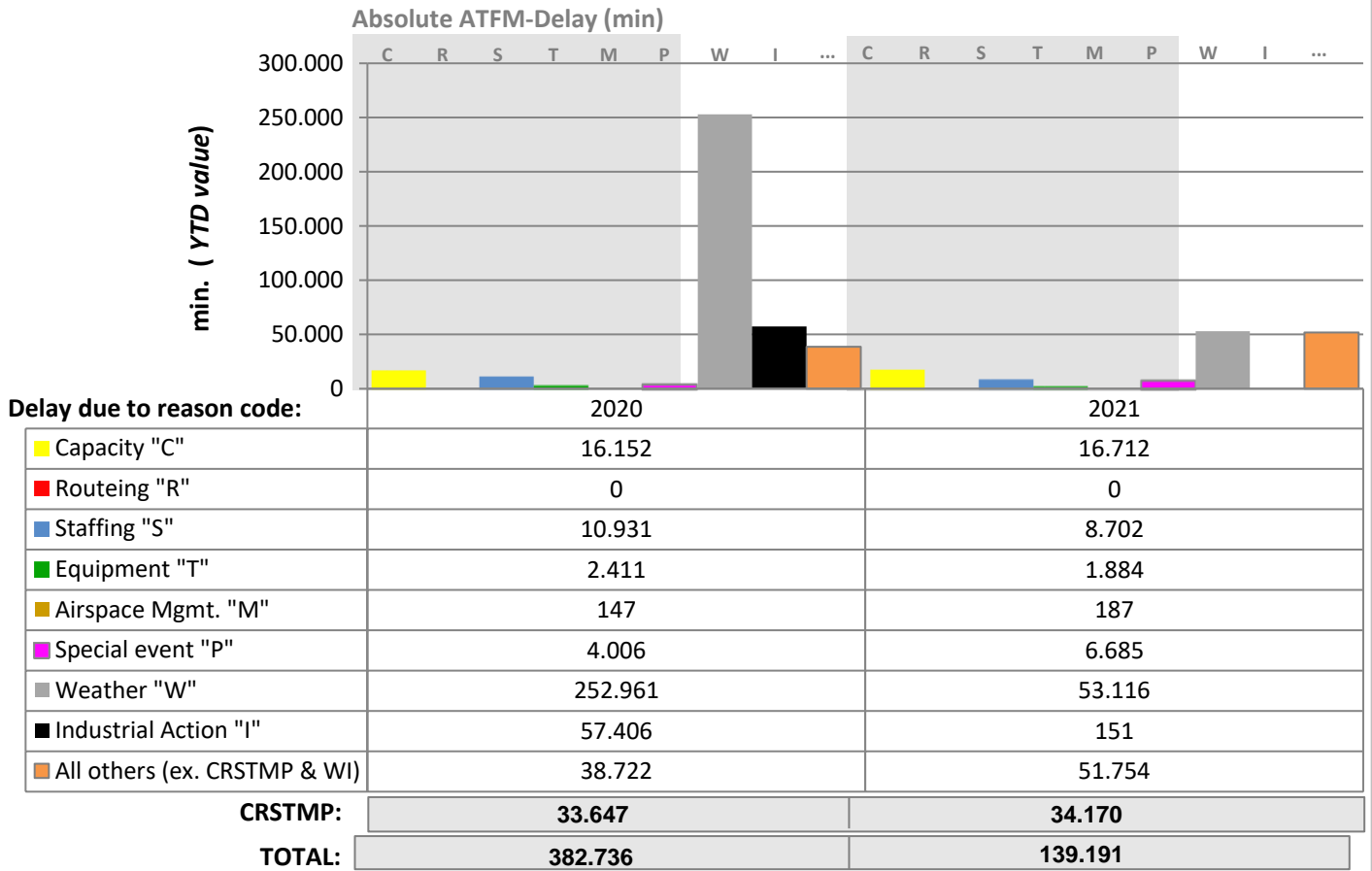
	skeyes	DFS	DSNA	LVNL	MUAC	skyguide
All others (ex. CRSTMP & WI)		0,00	0,00	0,00	0,00	0,00
Industrial Action "I"			0,00			
Weather "W"		0,11	0,07	0,01	0,00	0,04
Special event "P"		0,00	0,00	0,00		0,00
Airspace Mgmt. "M"		0,00	0,00		0,00	
Equipment "T"		0,00	0,00		0,00	0,00
Staffing "S"		0,02	0,27	0,00	0,00	0,00
Routeing "R"						
Capacity "C"	0,01	0,07	0,18	0,03	0,00	0,05

CRSTMP:	0,01	0,10	0,45	0,03	0,00	0,05
TOTAL:	0,01	0,20	0,52	0,05	0,00	0,08

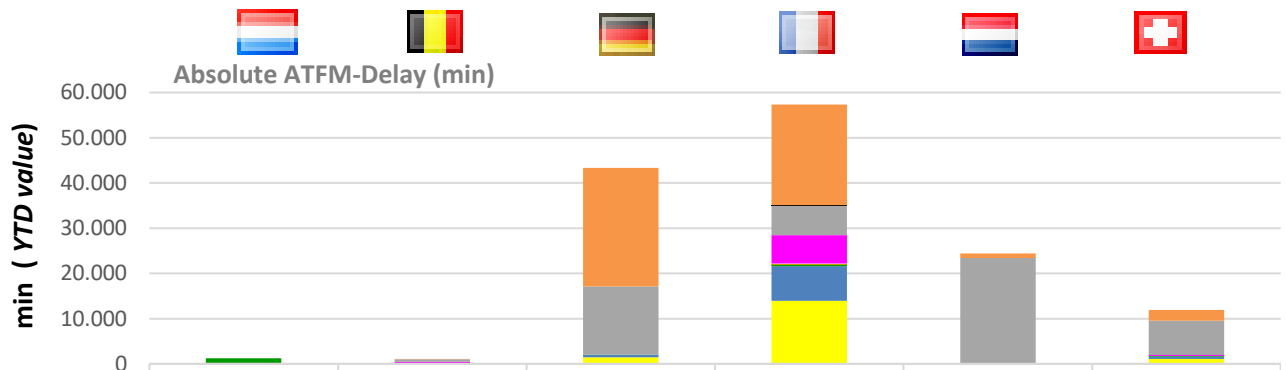
KPI #1: En-route ATFM delay per controlled flight (ACC)



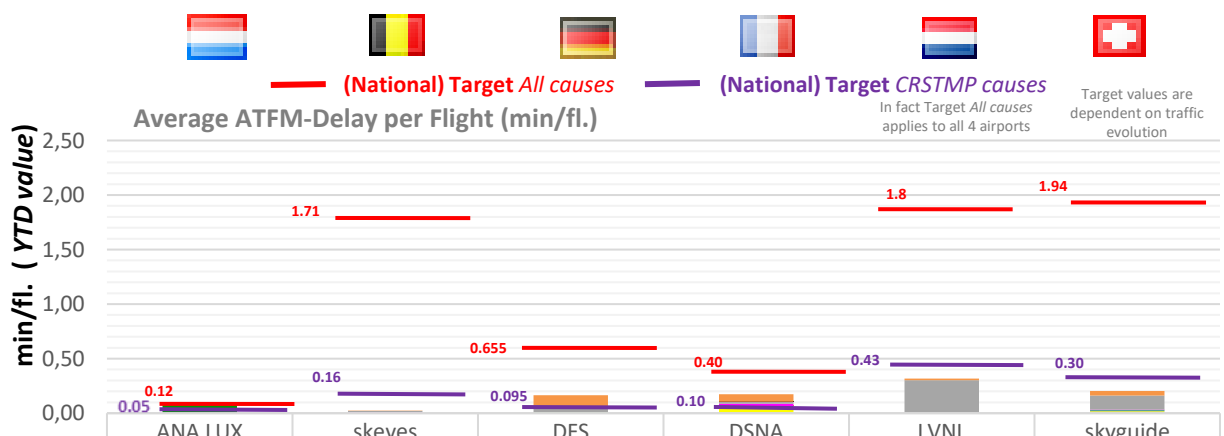
KPI #2: Arrival ATFM delay per reason code (FABEC)



KPI #2: Arrival ATFM delay per controlled flight (ANSP)



	ANA LUX	skeyes	DFS	DSNA	LVNL	skyguide
All others (ex. CRSTMP & WI)		20	26.153	22.212	1.023	2.346
Industrial Action "I"				151		
Weather "W"		577	15.083	6.535	23.310	7.611
Special event "P"		239		6.265		181
Airspace Mgmt. "M"				187		
Equipment "T"	1.263		100	352		169
Staffing "S"			507	7.665		530
Routeing "R"						
Capacity "C"		171	1.456	13.956	61	1.068
CRSTMP:	1.263	410	2.063	28.425	61	1.948
TOTAL:	1.263	1.007	43.299	57.323	24.394	11.905



	ANA LUX	skeyes	DFS	DSNA	LVNL	skyguide
All others (ex. CRSTMP & WI)		0,00	0,10	0,07	0,01	0,04
Industrial Action "I"				0,00		
Weather "W"	0,00	0,01	0,06	0,02	0,30	0,13
Special event "P"		0,01	0,00	0,02	0,00	0,00
Airspace Mgmt. "M"				0,00		
Equipment "T"	0,09		0,00	0,00	0,00	0,00
Staffing "S"			0,00	0,02		0,01
Routeing "R"						
Capacity "C"		0,00	0,01	0,04	0,00	0,02
CRSTMP:	0,09	0,01	0,01	0,09	0,00	0,03
TOTAL:	0,09	0,02	0,17	0,17	0,32	0,20

Glossary

KPI #1:

KPI #1 is set by IR (EU) 2019/317 and is expressed in minutes per flight. The EU-wide targets set for RP3 for this indicator are for 2020: 0.9 min/fl., 2021: 0.9 min/fl., 2022: 0.7 min/fl., 2023: 0.5 min/fl., 2024: 0.5 min/fl.

The targets set at FABEC level are as follows for the indicator 'En-route ATFM delay (all regulation causes) per controlled flight' for **2020**: 3.45 min/fl., **2021**: 3.88 min/fl., **2022**: 3.61 min/fl., **2023**: 2.19 min/fl., **2024**: 1.78 min/fl.

The targets set at FABEC level are as follows for the indicator 'En-route ATFM delay (CRSTMP regulation causes) per controlled flight' for **2020**: 2.28 min/fl., **2021**: 2.56 min/fl., **2022**: 2.38 min/fl., **2023**: 1.45 min/fl., **2024**: 1.17 min/fl.

KPI #2:

KPI #2 is set by IR (EU) 2019/317 and is expressed in minutes per flight. For this indicator, no targets have been defined at EU and FABEC level for RP3. The targets have been set at local level.

Cause	CODE	Guidelines for Application
ATC Capacity	C	En Route: Demand exceeds or complexity reduces declared or expected ATC capacity Airport: Demand exceeds declared or expected ATC capacity.
ATC Industrial Action	I	Reduction in any capacity due to industrial action by ATC staff
ATC Routeings	R	Network solutions / scenarios used to balance demand and capacity
ATC Staffing	S	Unplanned staff shortage reducing expected capacity.
ATC Equipment	T	Reduction of expected or declared capacity due to the non-availability or degradation of equipment used to provide an ATC service.
Accident / Incident	A	Reduction of expected ATC capacity due to an aircraft accident / incident.
Aerodrome Capacity	G	Reduction in declared or expected capacity due to the degradation or non-availability of infrastructure at an airport. e.g. Work in Progress, shortage of aircraft stands etc. Or when demand exceeds expected aerodrome capacity.
Equipment NON ATC- to be Aerodrome Services	E	Reduced capacity due to the degradation or non-availability of support equipment at an airport e.g. Fire Service, De-icing / snow removal equipment or other ground handling equipment.
Industrial Action NON ATC	N	A reduction in expected / planned capacity due to industrial action by non ATC personnel.
Airspace Management	M	Reduction in declared or expected capacity following changes in airspace / route availability due to small scale military activity.
Special Event	P	Reduction in planned, declared or expected capacity or when demand exceeds the above capacities as a result of a major sporting, governmental or social event. It may also be used for ATM system upgrades and transitions. Large multinational military exercises may also use this reason. This category should only be used with prior approval during the planning process.
Weather	W	Reduction in expected capacity due to any weather phenomena. This includes where weather impacts airport infrastructure capacity, but where aerodrome services are operating as planned / expected.
Environmental Issues	V	Reduction in any capacity or when demand exceeds any capacity due to agreed local noise, runway usage or similar procedures. This category should only be used with prior agreement in the planning process.
Other	O	This should only be used in exceptional circumstances when no other category is sufficient. An explanatory ANM remark MUST be given to allow post ops analysis.

CRSTMP:

ATC Capacity (**C**), ATC Routeings (**R**), ATC Staffing (**S**), ATC Equipment (**T**), Airspace Management (**M**), Special Event (**P**); a set of regulation codes which are defined in the Common Charging Scheme Regulation (IR 2019/317) and subject to financial incentive.

Note: Arrival figures (traffic and delay) do only include EBBR and EBLG for Belgium and only EHAM for the Netherlands.

TABLE OF ABBREVIATIONS

ADM - Average en-route ATFM Delay per Movement

ANSP - Air Navigation Service Provider

ATFM - Air Traffic Flow Management

ANM - Aeronautical Notification Message

FABEC - Functional Airspace Block Europe Central

ATM - Air Traffic Management

PRU - Performance Review Unit

YTD - Year to Date value

FPP - FABEC Performance Plan

CODA - Central Office for Delay Analysis

FABEC Performance Report Capacity:

Editor: FABEC PMG

Sources: EUROCONTROL, FABEC ANSPs

Status: August 2021

www.FABEC.eu

Notice

The FABEC PMG has made every effort to ensure that the information and analysis contained in this document are as accurate and complete as possible.

Only information from quoted sources has been used and information relating to named parties has been checked with the parties concerned.

Despite these precautions, should you find any errors or inconsistencies we would be grateful if you could please bring them to the FABEC PMG's attention.