



PERFORMANCE REPORT 2020 - 2024

CAPACITY

September 2024



skyguide



making the difference

Contents

Description & Analysis	3
FABEC TRAFFIC DEVELOPMENT (en-route)	4
FABEC TRAFFIC DEVELOPMENT (arrival)	6
KPI #1: En-route ATFM delay per controlled flight (FABEC)	8
KPI #2: Arrival ATFM delay per controlled flight (FABEC)	9
KPI #1: En-route ATFM delay per reason code (FABEC)	10
KPI #1: En-route ATFM delay per controlled flight (ANSP)	11
KPI #1: En-route ATFM delay per controlled flight (ACC)	12
KPI #2: Arrival ATFM delay per reason code (FABEC)	13
KPI #2: Arrival ATFM delay per controlled flight (ANSP)	14
Glossary	15

Description & Analysis

Europe

There were 1,007,427 flights in September, 4.3% more than September 2023. Traffic followed the seasonal trend, with a slight rise in early September before dropping off at the end of the month. The network had an average of 33,581 flights/day in September, about 1,300 flights/day more than in September 2023. The busiest day was Friday 06 September with 35,270 flights, which exceeded the busiest day of September 2023 (34,296 flights).

Among the Top 20 ACCs, only Langen ACC saw no increase in traffic compared to September 2023. Notably, seven ACCs - Ankara, Vienna, Budapest, Reims, Sofia, Beograd and Bordeaux registered substantial double-digit growth.

The rankings of the leading 6 airlines were unchanged since June, with Ryanair as the busiest operator averaging 3,571 movements per day (+9.1%) followed by easyJet (1,839), Turkish Airlines (1,510), Lufthansa (1,242) and Air France (1,112). Istanbul airport remained the busiest with an average of 1,481 flights/day, followed by Amsterdam Schiphol (1,438 flights/day), Paris Charles de Gaulle (1,388 flights/day), London Heathrow (1,339 flights/day) and Frankfurt (1,327 flights/day). All of the Top 20 airports had more traffic than in September 2023, with double-digit traffic growth at Barcelona, Rome Fiumicino and Athens.

In September 2024, the Low-cost segment continued to be, by far, the main contributor to flight growth with a 10.8% increase (+1,146 flights/day) compared to September 2023. In contrast, the other major passenger flights saw much smaller increases, with the Regional segment growing by 1.7% (+70 flights/day) and the Mainline segment increasing by just 0.9% (+107 flights/day). The Mainline segment saw fewer flights across Türkiye domestic (-67 flights/day), Norway domestic (-19 flights/day) and Spain domestic (excl. Canary Islands) (-18 flights/day) along with flights between Türkiye and Israel (-30 flights/day) and between Türkiye and the Middle-East (-19 flights/day). The Charter segment recorded a decrease of -2.7% (-35 flights/day) owing mainly to fewer daily flights between Türkiye and Israel (-12), Germany and Greece (-10), Germany and Egypt (-8) and UK and Spain (excl. Canary Islands) (-7). The Business aviation segment saw a 1.4% increase (+34 flights/day) whereas the All-cargo segment grew by 1.1% (+10 flights/day). By September 2024, only two segments surpassed their September 2023 levels: Business aviation (+11.4%) and Low-cost (+6.9%). Overall, flight numbers remained 2.7% below September 2019 levels.

Network departure punctuality (61.5%) and arrival punctuality (67.6%) were lower than in September 2023. The network was mainly impacted by weather and ATC capacity issues. Domestic routes had a departure punctuality of 72.9%, which was higher than the network level. Punctuality on the south-east axis was 54.8% which is a decrease of 5.1 pp compared to September 2023. Network first rotation departure punctuality was 77.0% and arrival punctuality was 84.2%. Improving first rotation punctuality remains a key objective for the Network Manager (NM).

There were 3.5 million minutes of ATFM delay in September, +38.0% compared to September 2023. En-route ATFM delay represented 73% of these ATFM delays. The average en-route ATFM delay per flight for the network was 2.6 minutes in September. Total en-route ATFM delays increased by 43.5% and total airport ATFM delays increased by 24.9%. Weather issues and ATC capacity shortage mainly on the south-east axis led to extensive flow measures. ATC capacity delays increased in Karlsruhe UAC and Budapest ACC due to capacity constraints in conjunction with military traffic and additional complexity. Storm Boris affected central Europe, with 13, 14 and 15 September seeing disruptions due to weather. Convective activity impacted operations on the south-east axis, particularly in Karlsruhe, Zagreb and Beograd ACCs. NM's Operational Centre reduced en-route ATFM delays by 10.7% and airport ATFM delays by 9.9% through direct actions. NM estimates that 3.1 million tonnes of fuel was burnt in the en-route flight phase in the NM area in September (Source: NM).

Delays from the passengers' point of view

For September 2024, the Central Office for Delay Analysis (CODA) reported that the average delay per flight on departure was 21.1 minutes per flight - an increase of 3.0 minutes per flight compared to September 2023. 43% of the total delay can be attributable to air traffic control. Airlines caused 44% of the total delay, resulting from such issues as technical problems, staff shortages or turnaround times that are too tightly scheduled. Airports caused 5% of the delays while the rest (IATA-Code 85,86,71-79,97-99) of around 8% can be allocated to other reasons (Source: CODA-Dashboard-09-2024, Date 29/10/2024).

FABEC

In the FABEC area, traffic decreased by 3.3% in September 2024 compared to the same month in 2019 leading to a -4.8% traffic evolution over the first three quarters of 2024. In September, traffic was down in some ANSPs and up for others; from -10.2% in skeyes, -9.4% in LVNL, -8.6% in DFS, -2.0% in MUAC to an increase of traffic by +3.0% in DSNA and +3.5% in Skyguide. Airport traffic dropped significantly (-12.7% in the FABEC area) with high disparities between ANSPs. Landings decreased by an impressive -20.7% in DFS, -14.6% in skeyes, to -8.2% in DSNA, -5.0% in ANA LUX, -4.7% in LVNL and -1.6% in Skyguide.

In September 2024, Karlsruhe UAC (408 125 min), Marseille ACC (179 371 min) and Reims ACC (116 394 min) were the units to generate the most en-route ATFM delays. In Karlsruhe, delays were due to 'ATC-Capacity' (63%), 'Weather' (30%), 'Staffing' (4%), 'Airspace Management' (2%) and 'Other' (1%); in Marseille, 'Weather' (40%), 'Staffing' (33%), 'ATC-Capacity' (20%), 'Airspace Management' (4%) and 'Equipment (ATC)' (4%); in Reims, 'ATC-Capacity' (64%), 'Weather' (19%), 'Staffing' (12%) and 'Equipment (ATC)' (4%).

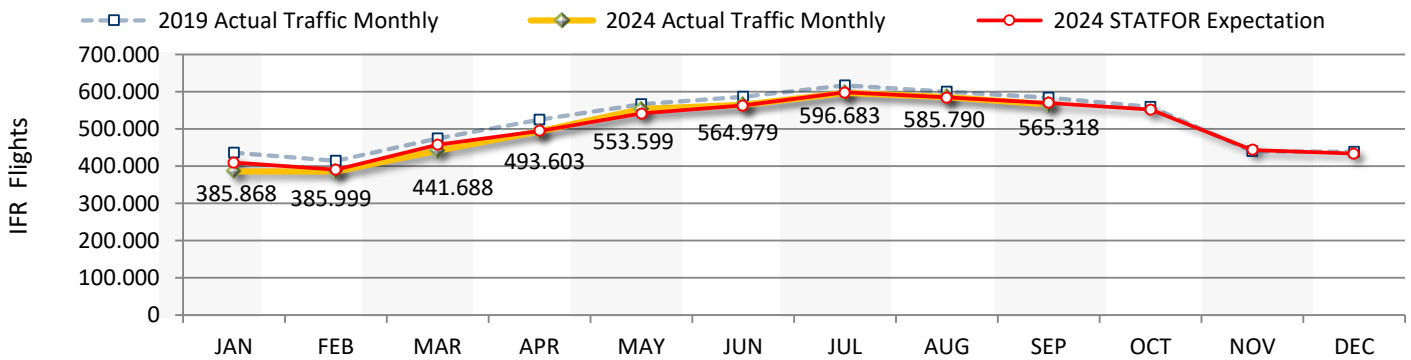
The en-route ATFM delay per flight all causes reached 2.06 min/ft in September 2024 compared to 2.01 min/ft in 2023. After 9 months in 2024, the en-route ATFM delay all causes reaches 1.84 whereas the guideline value is 0.42 min/ft. The en-route ATFM delay CRSTMP causes reached 1.10 min/ft at the end of September; this value is, as well, far beyond the FABEC guideline value (0.29 min/ft).

Airport ATFM delays were mainly generated in Amsterdam Schiphol/EHAM (123 064 min), Zurich/LSZH (35 367 min) and Frankfurt Main/EDDF (25 642 min). In Amsterdam Schiphol, delays were due to 'Weather' (56%) and 'Aerodrome Capacity' (44%). In Zurich, delays were due to 'Weather' (85%), 'Aerodrome Capacity' (15%); in Frankfurt Main, 'Weather' (80%), 'Aerodrome Capacity' (11%), 'Aerodrome Capacity (ATC)' (8%) and 'Aerodrome Services' (1%).

Over the period Jan - Sep 2024, DFS, DSNA and Skyguide are not achieving their respective en-route CRSTMP ATFM delay per flight target, contrarily to the other FABEC ANSPs. For the Arrival ATFM delay per Arrival flight, skeyes and LVNL are currently the only FABEC ANSPs to achieve their respective CRSTMP arrival ATFM delay per Arrival flight target.

FABEC TRAFFIC DEVELOPMENT (*en-route*)

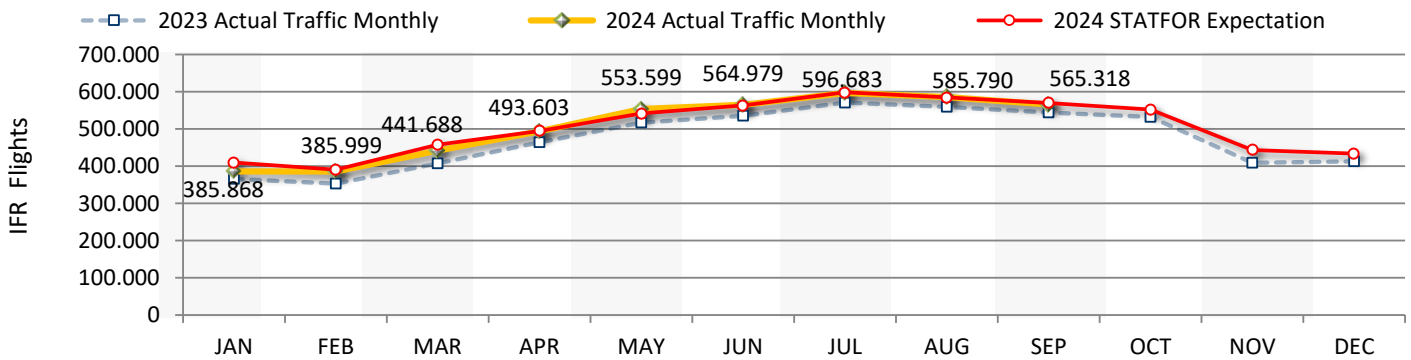
FABEC	JAN	FEB	MAR	APR	MAY	JUN	JUL	AUG	SEP	OCT	NOV	DEC	YTD
2019 Actual Traffic Monthly	435.809	414.272	474.729	524.490	566.051	586.281	617.104	600.261	584.310	558.973	439.854	438.590	4.803.307
2024 Actual Traffic Monthly	385.868	385.999	441.688	493.603	553.599	564.979	596.683	585.790	565.318				4.573.527
Growth (%)	-11,5 %	-6,8 %	-7,0 %	-5,9 %	-2,2 %	-3,6 %	-3,3 %	-2,4 %	-3,3 %				-4,8 %
2024 STATFOR Expectation	409.742	390.555	457.268	494.174	541.777	563.001	598.480	584.435	569.756	551.711	443.144	433.956	6.038.000
2024 Traffic Evolution (%)	-5,8 %	-1,2 %	-3,4 %	-0,1 %	2,2 %	0,4 %	-0,3 %	0,2 %	-0,8 %				
2024 Traffic Cumulated (%)	-5,8 %	-3,6 %	-3,5 %	-2,5 %	-1,4 %	-1,1 %	-0,9 %	-0,8 %	-0,8 %				



	JAN	FEB	MAR	APR	MAY	JUN	JUL	AUG	SEP	OCT	NOV	DEC	YTD
skeyes													
2019 Actual Traffic Monthly	46.085	42.458	49.539	53.761	57.702	58.513	62.239	59.274	59.410	57.544	46.709	46.631	488.981
2024 Actual Traffic Monthly	39.600	39.692	43.588	48.001	52.595	53.915	57.084	55.418	53.354				443.247
Growth (%)	-14,1 %	-6,5 %	-12,0 %	-10,7 %	-8,9 %	-7,9 %	-8,3 %	-6,5 %	-10,2 %				-9,4 %
DFS													
2019 Actual Traffic Monthly	222.009	211.766	240.686	258.289	282.291	286.199	299.444	292.210	291.681	284.915	225.050	223.636	2.384.575
2024 Actual Traffic Monthly	183.635	182.394	208.971	232.136	263.112	263.948	275.245	270.175	266.559				2.146.175
Growth (%)	-17,3 %	-13,9 %	-13,2 %	-10,1 %	-6,8 %	-7,8 %	-8,1 %	-7,5 %	-8,6 %				-10,0 %
DSNA													
2019 Actual Traffic Monthly	221.573	209.836	244.322	283.032	302.429	321.951	340.265	329.402	313.806	292.190	221.663	221.576	2.566.616
2024 Actual Traffic Monthly	211.771	212.346	246.278	280.675	315.309	326.499	346.509	340.261	323.228				2.602.876
Growth (%)	-4,4 %	1,2 %	0,8 %	-0,8 %	4,3 %	1,4 %	1,8 %	3,3 %	3,0 %				1,4 %
LVNL													
2019 Actual Traffic Monthly	46.111	44.366	50.512	53.470	57.492	55.907	57.593	57.195	56.974	57.181	47.564	47.298	479.620
2024 Actual Traffic Monthly	42.261	42.665	46.960	48.003	52.384	51.359	53.466	53.015	51.618				441.731
Growth (%)	-8,3 %	-3,8 %	-7,0 %	-10,2 %	-8,9 %	-8,1 %	-7,2 %	-7,3 %	-9,4 %				-7,9 %
MUAC													
2019 Actual Traffic Monthly	138.773	129.324	147.712	154.875	164.086	166.793	176.133	173.200	168.761	166.082	137.728	139.287	1.419.657
2024 Actual Traffic Monthly	123.083	122.104	136.740	147.278	165.132	164.147	172.195	168.095	165.337				1.364.111
Growth (%)	-11,3 %	-5,6 %	-7,4 %	-4,9 %	0,6 %	-1,6 %	-2,2 %	-2,9 %	-2,0 %				-3,9 %
Skyguide													
2019 Actual Traffic Monthly	89.334	86.268	99.645	110.651	120.991	127.214	133.394	127.821	124.023	115.533	86.141	89.466	1.019.341
2024 Actual Traffic Monthly	83.530	84.600	97.545	111.408	125.139	128.701	136.259	133.856	128.341				1.029.379
Growth (%)	-6,5 %	-1,9 %	-2,1 %	0,7 %	3,4 %	1,2 %	2,1 %	4,7 %	3,5 %				1,0 %

FABEC TRAFFIC DEVELOPMENT (*en-route*)

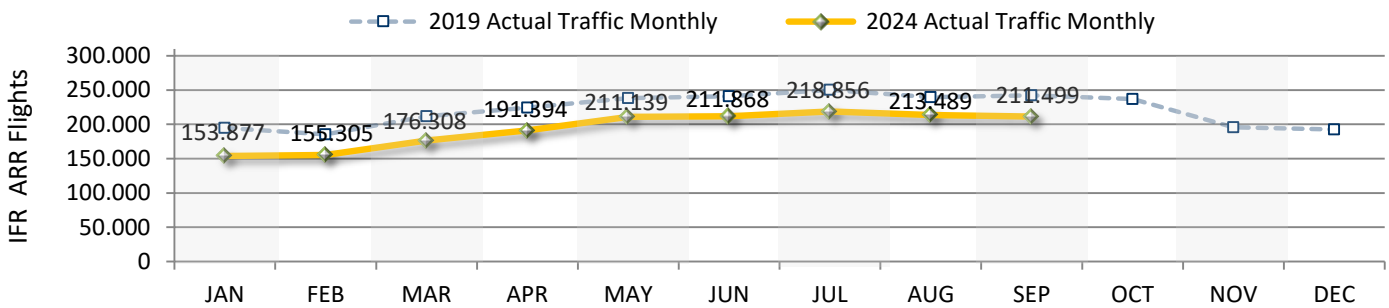
FABEC	JAN	FEB	MAR	APR	MAY	JUN	JUL	AUG	SEP	OCT	NOV	DEC	YTD
2023 Actual Traffic Monthly	365.437	352.988	407.137	463.740	516.846	535.557	570.817	559.010	544.407	532.182	408.813	412.539	4.315.939
2024 Actual Traffic Monthly	385.868	385.999	441.688	493.603	553.599	564.979	596.683	585.790	565.318				4.573.527
Growth (%)	5,6 %	9,4 %	8,5 %	6,4 %	7,1 %	5,5 %	4,5 %	4,8 %	3,8 %				6,0 %
2024 STATFOR Expectation	409.742	390.555	457.268	494.174	541.777	563.001	598.480	584.435	569.756	551.711	443.144	433.956	6.038.000
2024 Traffic Evolution (%)	-5,8 %	-1,2 %	-3,4 %	-0,1 %	2,2 %	0,4 %	-0,3 %	0,2 %	-0,8 %				
2024 Traffic Cumulated (%)	-5,8 %	-3,6 %	-3,5 %	-2,5 %	-1,4 %	-1,1 %	-0,9 %	-0,8 %	-0,8 %				



	JAN	FEB	MAR	APR	MAY	JUN	JUL	AUG	SEP	OCT	NOV	DEC	YTD
skeyes													
2023 Actual Traffic Monthly	36.485	36.295	42.495	46.473	50.917	51.783	54.520	52.729	53.120	51.956	41.291	42.062	424.817
2024 Actual Traffic Monthly	39.600	39.692	43.588	48.001	52.595	53.915	57.084	55.418	53.354				443.247
Growth (%)	8,5 %	9,4 %	2,6 %	3,3 %	3,3 %	4,1 %	4,7 %	5,1 %	0,4 %				4,3 %
DFS													
2023 Actual Traffic Monthly	173.393	165.403	199.318	223.857	246.275	252.722	264.174	260.301	258.606	257.158	198.971	190.862	2.044.049
2024 Actual Traffic Monthly	183.635	182.394	208.971	232.136	263.112	263.948	275.245	270.175	266.559				2.146.175
Growth (%)	5,9 %	10,3 %	4,8 %	3,7 %	6,8 %	4,4 %	4,2 %	3,8 %	3,1 %				5,0 %
DSNA													
2023 Actual Traffic Monthly	201.137	195.983	220.587	259.024	291.610	304.890	330.116	320.315	307.563	296.843	222.481	233.612	2.431.225
2024 Actual Traffic Monthly	211.771	212.346	246.278	280.675	315.309	326.499	346.509	340.261	323.228				2.602.876
Growth (%)	5,3 %	8,3 %	11,6 %	8,4 %	8,1 %	7,1 %	5,0 %	6,2 %	5,1 %				7,1 %
LVNL													
2023 Actual Traffic Monthly	37.554	36.153	42.950	45.901	49.919	49.730	51.787	51.738	51.031	51.534	42.979	42.874	416.763
2024 Actual Traffic Monthly	42.261	42.665	46.960	48.003	52.384	51.359	53.466	53.015	51.618				441.731
Growth (%)	12,5 %	18,0 %	9,3 %	4,6 %	4,9 %	3,3 %	3,2 %	2,5 %	1,2 %				6,0 %
MUAC													
2023 Actual Traffic Monthly	114.330	108.415	130.400	141.634	154.289	156.486	166.378	163.692	160.577	159.010	127.494	128.546	1.296.201
2024 Actual Traffic Monthly	123.083	122.104	136.740	147.278	165.132	164.147	172.195	168.095	165.337				1.364.111
Growth (%)	7,7 %	12,6 %	4,9 %	4,0 %	7,0 %	4,9 %	3,5 %	2,7 %	3,0 %				5,2 %
Skyguide													
2023 Actual Traffic Monthly	75.735	75.644	85.707	97.788	109.762	115.273	125.768	122.438	119.191	114.149	81.803	88.811	927.306
2024 Actual Traffic Monthly	83.530	84.600	97.545	111.408	125.139	128.701	136.259	133.856	128.341				1.029.379
Growth (%)	10,3 %	11,8 %	13,8 %	13,9 %	14,0 %	11,6 %	8,3 %	9,3 %	7,7 %				11,0 %

FABEC TRAFFIC DEVELOPMENT (arrival)

FABEC	JAN	FEB	MAR	APR	MAY	JUN	JUL	AUG	SEP	OCT	NOV	DEC	YTD
2019 Actual Traffic Monthly	194.850	185.420	211.796	224.471	238.490	240.788	250.186	239.483	242.195	236.830	195.678	192.743	2.027.679
2024 Actual Traffic Monthly	153.877	155.305	176.308	191.394	211.139	211.868	218.856	213.489	211.499				1.743.735
Growth (%)	-21,0 %	-16,2 %	-16,8 %	-14,7 %	-11,5 %	-12,0 %	-12,5 %	-10,9 %	-12,7 %				-14,0 %



	JAN	FEB	MAR	APR	MAY	JUN	JUL	AUG	SEP	OCT	NOV	DEC	YTD
ANA LUX													
2019 Actual Traffic Monthly	2.728	2.640	3.007	3.285	3.451	3.420	3.410	3.160	3.445	3.466	3.150	3.022	28.546
2024 Actual Traffic Monthly	2.412	2.361	2.839	3.127	3.419	3.324	3.308	3.210	3.273				27.273
Growth (%)	-11,6 %	-10,6 %	-5,6 %	-4,8 %	-0,9 %	-2,8 %	-3,0 %	1,6 %	-5,0 %				-4,5 %

	JAN	FEB	MAR	APR	MAY	JUN	JUL	AUG	SEP	OCT	NOV	DEC	YTD
skeyes													
2019 Actual Traffic Monthly	9.804	8.825	10.293	11.083	11.763	11.678	12.607	12.086	12.016	11.632	10.315	9.981	100.155
2024 Actual Traffic Monthly	7.746	8.007	8.728	9.254	10.022	9.843	10.894	10.472	10.267				85.233
Growth (%)	-21,0 %	-9,3 %	-15,2 %	-16,5 %	-14,8 %	-15,7 %	-13,6 %	-13,4 %	-14,6 %				-14,9 %

	JAN	FEB	MAR	APR	MAY	JUN	JUL	AUG	SEP	OCT	NOV	DEC	YTD
DFS													
2019 Actual Traffic Monthly	78.274	75.894	85.673	88.848	96.254	95.027	98.049	95.422	98.321	97.898	79.529	76.266	811.762
2024 Actual Traffic Monthly	54.177	54.490	62.152	70.242	77.072	77.005	77.995	77.569	77.962				628.664
Growth (%)	-30,8 %	-28,2 %	-27,5 %	-20,9 %	-19,9 %	-19,0 %	-20,5 %	-18,7 %	-20,7 %				-22,6 %

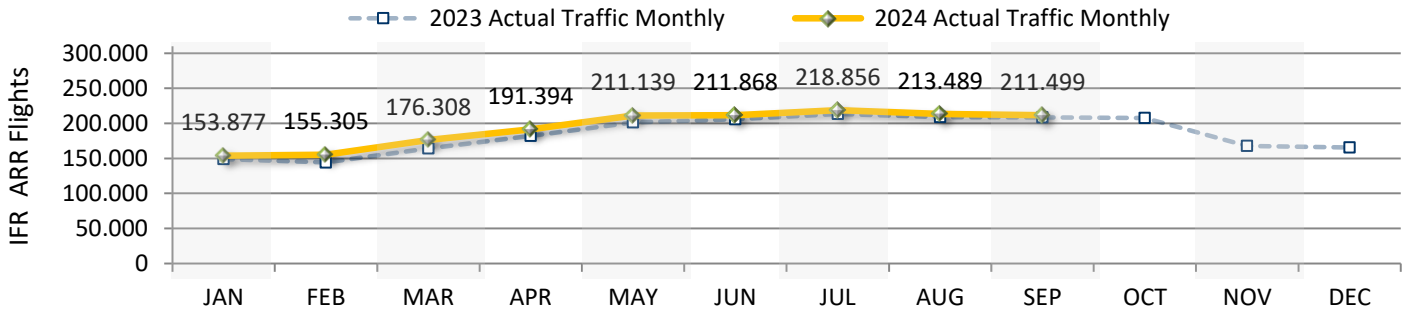
	JAN	FEB	MAR	APR	MAY	JUN	JUL	AUG	SEP	OCT	NOV	DEC	YTD
DSNA													
2019 Actual Traffic Monthly	66.766	63.317	73.401	81.023	84.477	88.656	92.799	86.055	86.206	81.851	67.332	66.631	722.700
2024 Actual Traffic Monthly	55.553	56.506	65.244	70.713	79.576	81.402	84.903	80.736	79.164				653.797
Growth (%)	-16,8 %	-10,8 %	-11,1 %	-12,7 %	-5,8 %	-8,2 %	-8,5 %	-6,2 %	-8,2 %				-9,5 %

	JAN	FEB	MAR	APR	MAY	JUN	JUL	AUG	SEP	OCT	NOV	DEC	YTD
LVNL													
2019 Actual Traffic Monthly	18.998	18.021	20.363	21.455	22.973	22.330	22.933	23.046	22.639	22.777	19.390	19.628	192.758
2024 Actual Traffic Monthly	17.985	18.064	19.694	20.160	21.757	21.233	21.925	22.225	21.586				184.629
Growth (%)	-5,3 %	0,2 %	-3,3 %	-6,0 %	-5,3 %	-4,9 %	-4,4 %	-3,6 %	-4,7 %				-4,2 %

	JAN	FEB	MAR	APR	MAY	JUN	JUL	AUG	SEP	OCT	NOV	DEC	YTD
Skyguide													
2019 Actual Traffic Monthly	18.280	16.723	19.059	18.777	19.572	19.677	20.388	19.714	19.568	19.206	15.962	17.215	171.758
2024 Actual Traffic Monthly	16.004	15.877	17.651	17.898	19.293	19.061	19.831	19.277	19.247				164.139
Growth (%)	-12,5 %	-5,1 %	-7,4 %	-4,7 %	-1,4 %	-3,1 %	-2,7 %	-2,2 %	-1,6 %				-4,4 %

FABEC TRAFFIC DEVELOPMENT (arrival)

FABEC	JAN	FEB	MAR	APR	MAY	JUN	JUL	AUG	SEP	OCT	NOV	DEC	YTD
2023 Actual Traffic Monthly	149.001	144.293	164.212	181.955	201.172	205.627	213.450	208.785	208.363	207.845	167.639	165.452	1.676.858
2024 Actual Traffic Monthly	153.877	155.305	176.308	191.394	211.139	211.868	218.856	213.489	211.499				1.743.735
Growth (%)	3,3 %	7,6 %	7,4 %	5,2 %	5,0 %	3,0 %	2,5 %	2,3 %	1,5 %				4,0 %



	JAN	FEB	MAR	APR	MAY	JUN	JUL	AUG	SEP	OCT	NOV	DEC	YTD
ANA LUX													
2023 Actual Traffic Monthly	2.438	2.448	2.874	3.038	3.235	3.376	3.321	3.149	3.320	3.360	2.745	2.718	27.199
2024 Actual Traffic Monthly	2.412	2.361	2.839	3.127	3.419	3.324	3.308	3.210	3.273				27.273
Growth (%)	-1,1 %	-3,6 %	-1,2 %	2,9 %	5,7 %	-1,5 %	-0,4 %	1,9 %	-1,4 %				0,3 %

	JAN	FEB	MAR	APR	MAY	JUN	JUL	AUG	SEP	OCT	NOV	DEC	YTD
skeyes													
2023 Actual Traffic Monthly	7.407	7.199	8.416	8.954	9.905	9.779	10.408	10.091	9.776	9.745	8.515	8.251	81.935
2024 Actual Traffic Monthly	7.746	8.007	8.728	9.254	10.022	9.843	10.894	10.472	10.267				85.233
Growth (%)	4,6 %	11,2 %	3,7 %	3,4 %	1,2 %	0,7 %	4,7 %	3,8 %	5,0 %				4,0 %

	JAN	FEB	MAR	APR	MAY	JUN	JUL	AUG	SEP	OCT	NOV	DEC	YTD
DFS													
2023 Actual Traffic Monthly	51.574	49.634	58.555	65.855	72.697	74.737	76.288	76.282	76.964	78.479	62.505	56.317	602.586
2024 Actual Traffic Monthly	54.177	54.490	62.152	70.242	77.072	77.005	77.995	77.569	77.962				628.664
Growth (%)	5,0 %	9,8 %	6,1 %	6,7 %	6,0 %	3,0 %	2,2 %	1,7 %	1,3 %				4,3 %

	JAN	FEB	MAR	APR	MAY	JUN	JUL	AUG	SEP	OCT	NOV	DEC	YTD
DSNA													
2023 Actual Traffic Monthly	56.987	55.982	60.591	68.445	76.742	79.428	83.135	79.222	78.888	76.245	60.888	63.297	639.420
2024 Actual Traffic Monthly	55.553	56.506	65.244	70.713	79.576	81.402	84.903	80.736	79.164				653.797
Growth (%)	-2,5 %	0,9 %	7,7 %	3,3 %	3,7 %	2,5 %	2,1 %	1,9 %	0,3 %				2,2 %

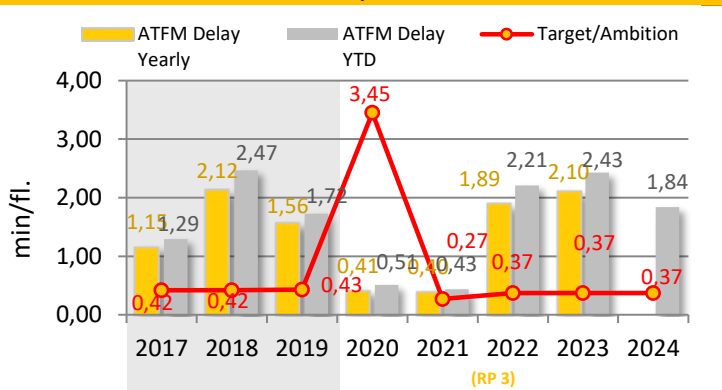
	JAN	FEB	MAR	APR	MAY	JUN	JUL	AUG	SEP	OCT	NOV	DEC	YTD
LVNL													
2023 Actual Traffic Monthly	15.524	14.707	17.314	18.881	20.648	20.321	21.248	21.424	20.948	21.448	18.279	18.346	171.015
2024 Actual Traffic Monthly	17.985	18.064	19.694	20.160	21.757	21.233	21.925	22.225	21.586				184.629
Growth (%)	15,9 %	22,8 %	13,7 %	6,8 %	5,4 %	4,5 %	3,2 %	3,7 %	3,0 %				8,0 %

	JAN	FEB	MAR	APR	MAY	JUN	JUL	AUG	SEP	OCT	NOV	DEC	YTD
Skyguide													
2023 Actual Traffic Monthly	15.071	14.323	16.462	16.782	17.945	17.986	19.050	18.617	18.467	18.568	14.707	16.523	154.703
2024 Actual Traffic Monthly	16.004	15.877	17.651	17.898	19.293	19.061	19.831	19.277	19.247				164.139
Growth (%)	6,2 %	10,8 %	7,2 %	6,6 %	7,5 %	6,0 %	4,1 %	3,5 %	4,2 %				6,1 %

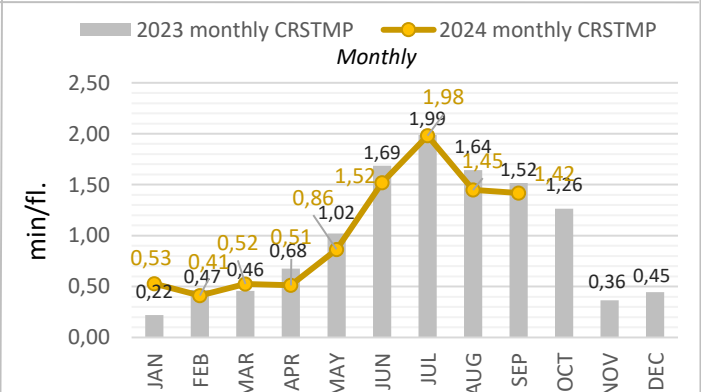
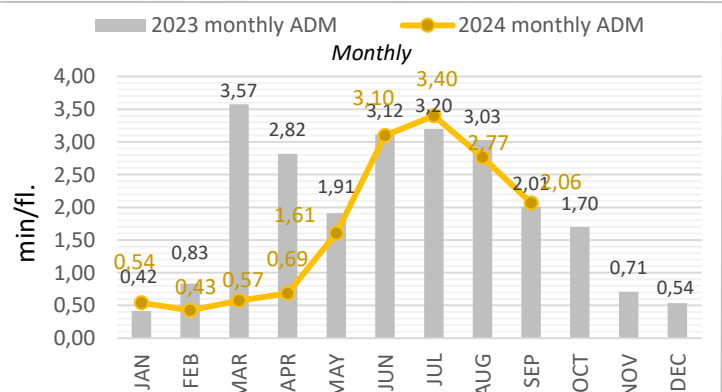
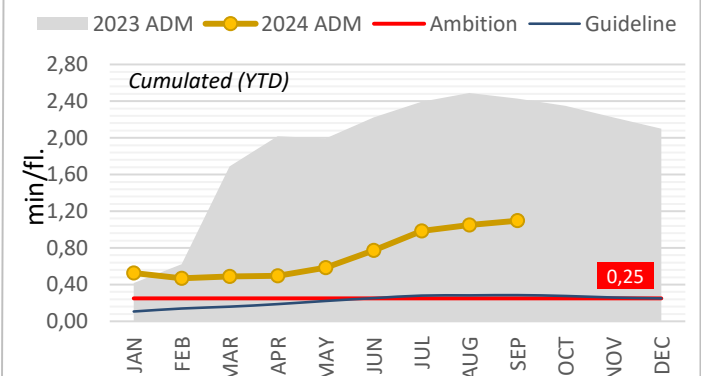
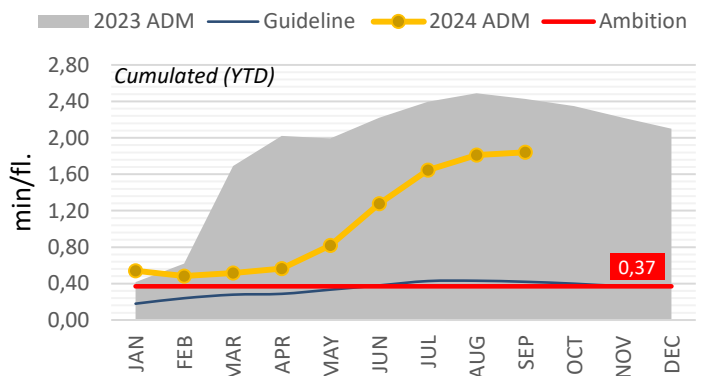
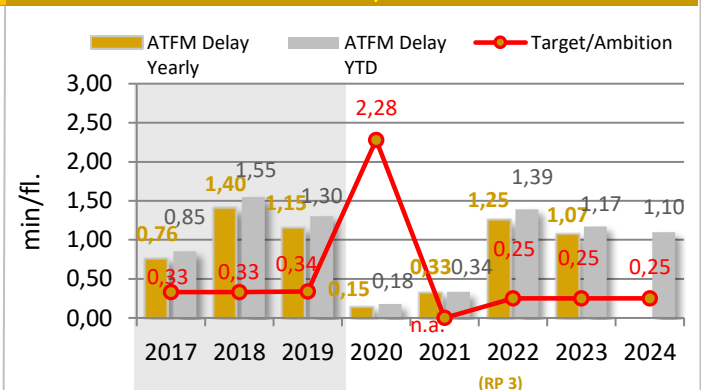
KPI #1: En-route ATFM delay per controlled flight (FABEC)

	YTD 2024	YTD 2023		YTD 2024	YTD 2023
En-route Delay All causes	1,84	2,43	En-route Delay CRSTMP causes	1,10	1,17
FABEC Ambition	0,37		FABEC Ambition	0,25	
Guideline	0,42		Guideline	0,29	
Minute ('000) ALL causes	8.420	10.480	Minute ('000) CRSTMP causes	5.014	5.054
Diff. 2024 - 2023	- 19,7 %		Diff. 2024 - 2023	- 1 %	
Traffic ('000)	4.574	4.316	<i>Potential savings (*) due to underbid the delay Target</i>		
Diff. 2024 - 2023	+ 6,0 %		<i>(all Causes) in Mio EURO (YTD)</i> ▶ 0,0		
<small>* Cost of ATFM-delay per min = 100 €</small>					

All Delay Causes



CRSTMP Delay Causes

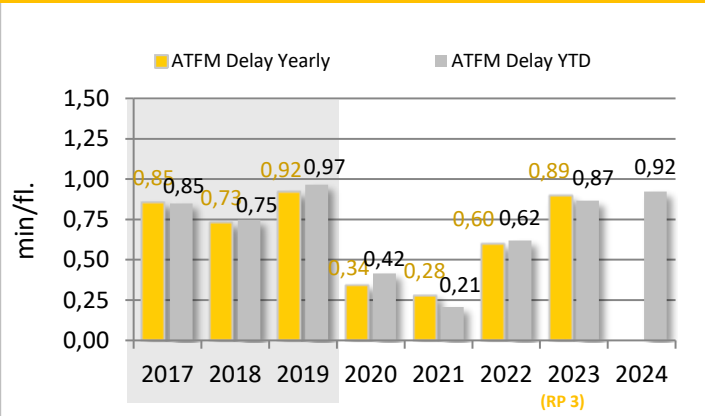


The guideline for the en-route ATFM delay per movement is a basic cumulative extrapolation of the 2017-2019 monthly allocation and is designed to give an impression, how the YTD figures should be, in order to reach the yearly 2024 ambition value set by FABEC States.

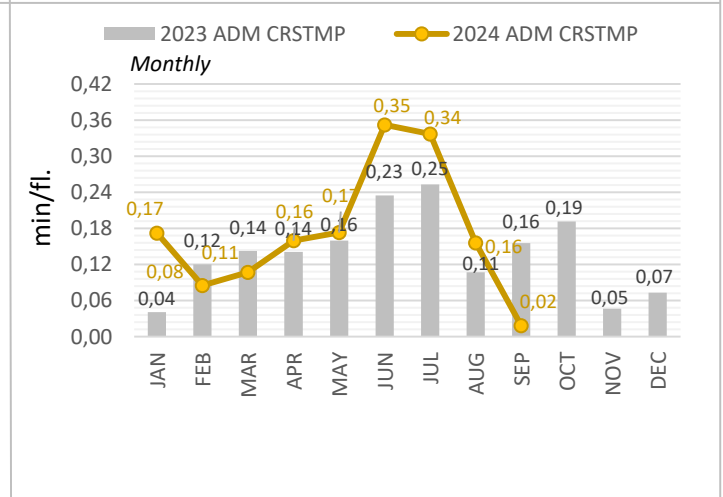
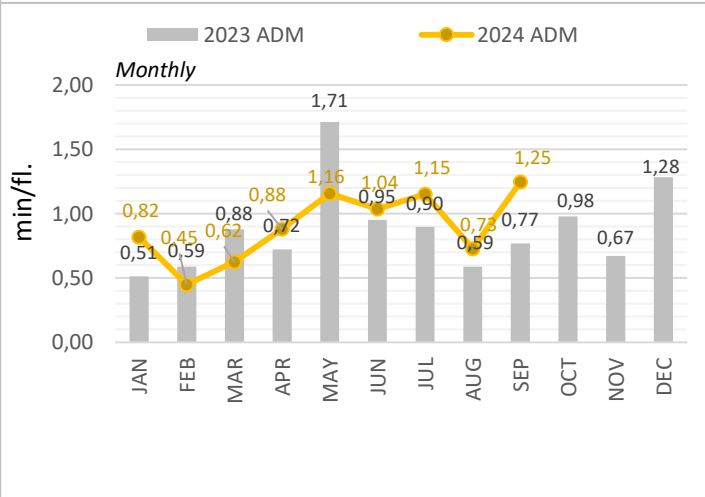
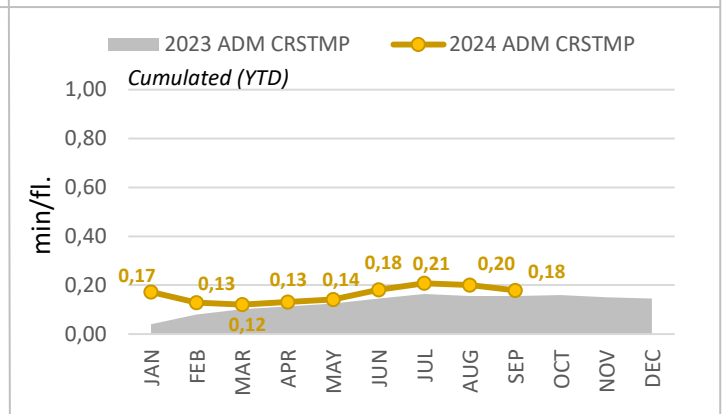
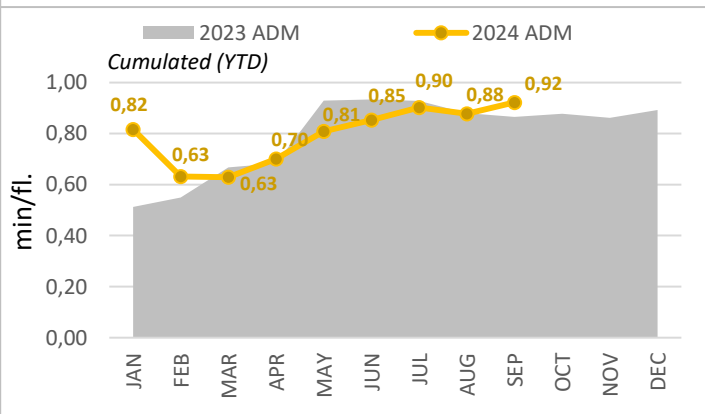
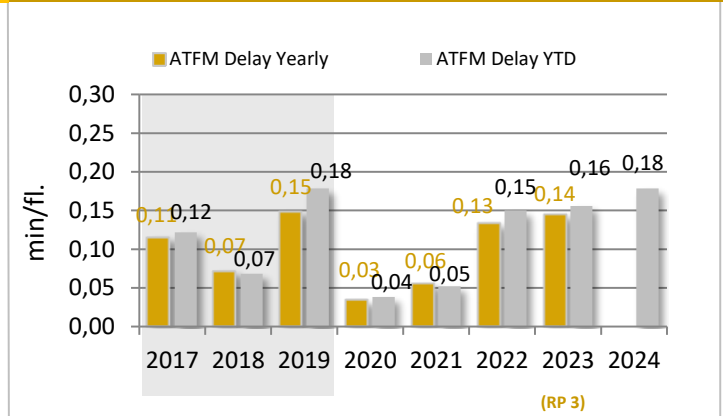
KPI #2: Arrival ATFM delay per controlled flight (FABEC)

	YTD 2024	YTD 2023	YTD 2024	YTD 2023
Arrival Delay All causes	0,92	0,87	Arrival Delay CRSTMP causes	0,18
Diff. 2024 - 2023	+ 7 %		Diff. 2024 - 2023	+ 14 %
Minute ('000) ALL causes	1608	1.452	Minute ('000) CRSTMP causes	311
Diff. 2024 - 2023	+ 11 %		Diff. 2024 - 2023	+ 19 %
Traffic ('000)	1.744	1.677		
Diff. 2024 - 2023	+ 4 %			

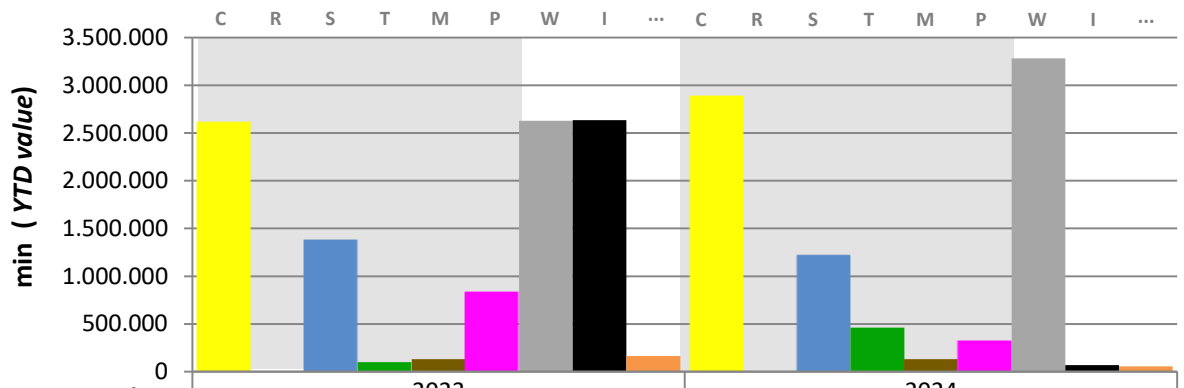
All Delay Causes



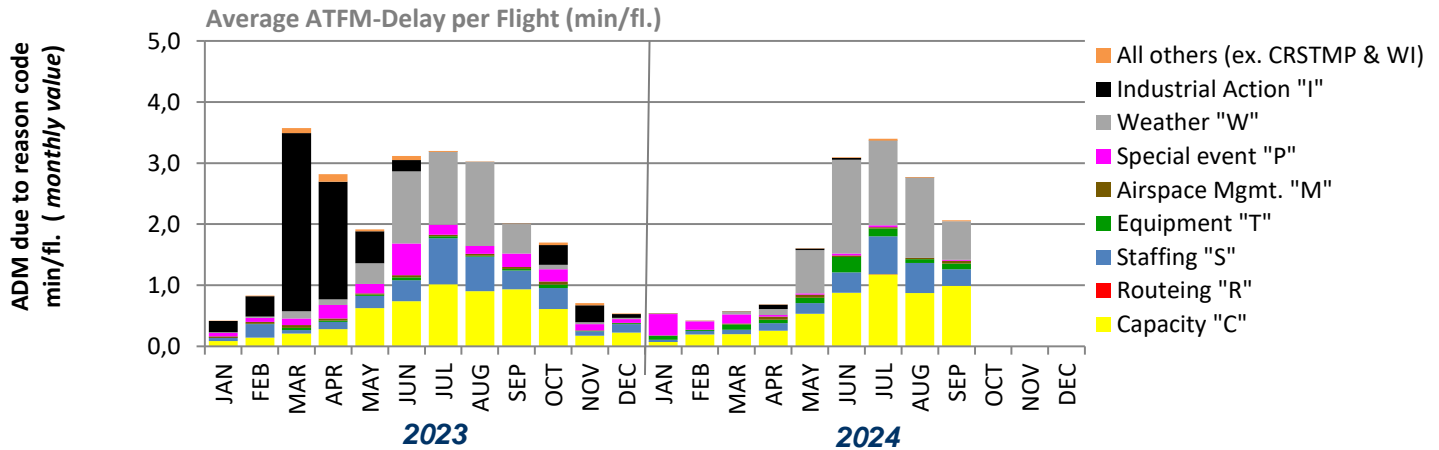
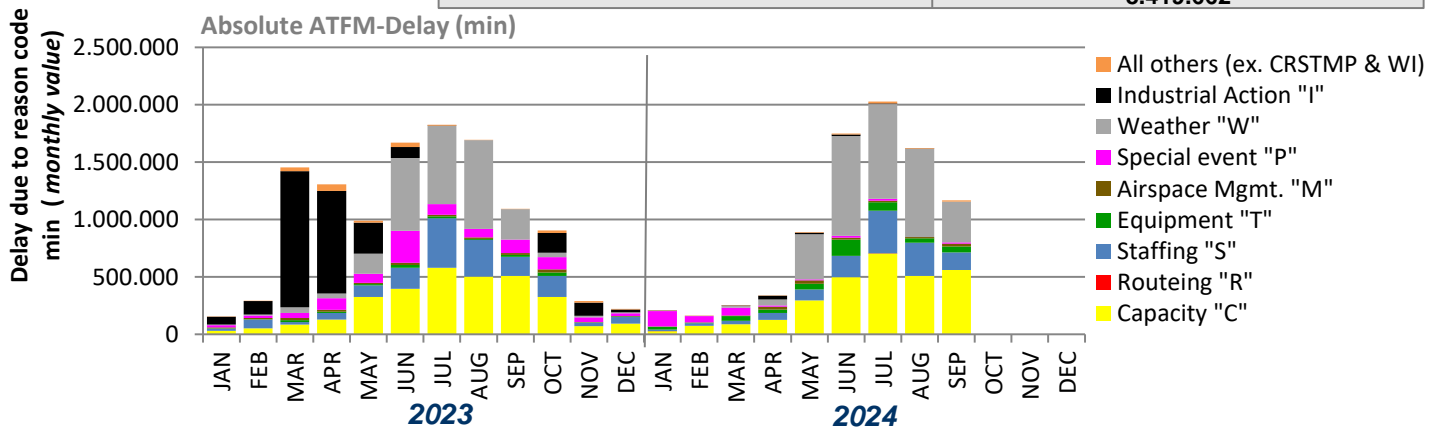
CRSTMP Delay Causes



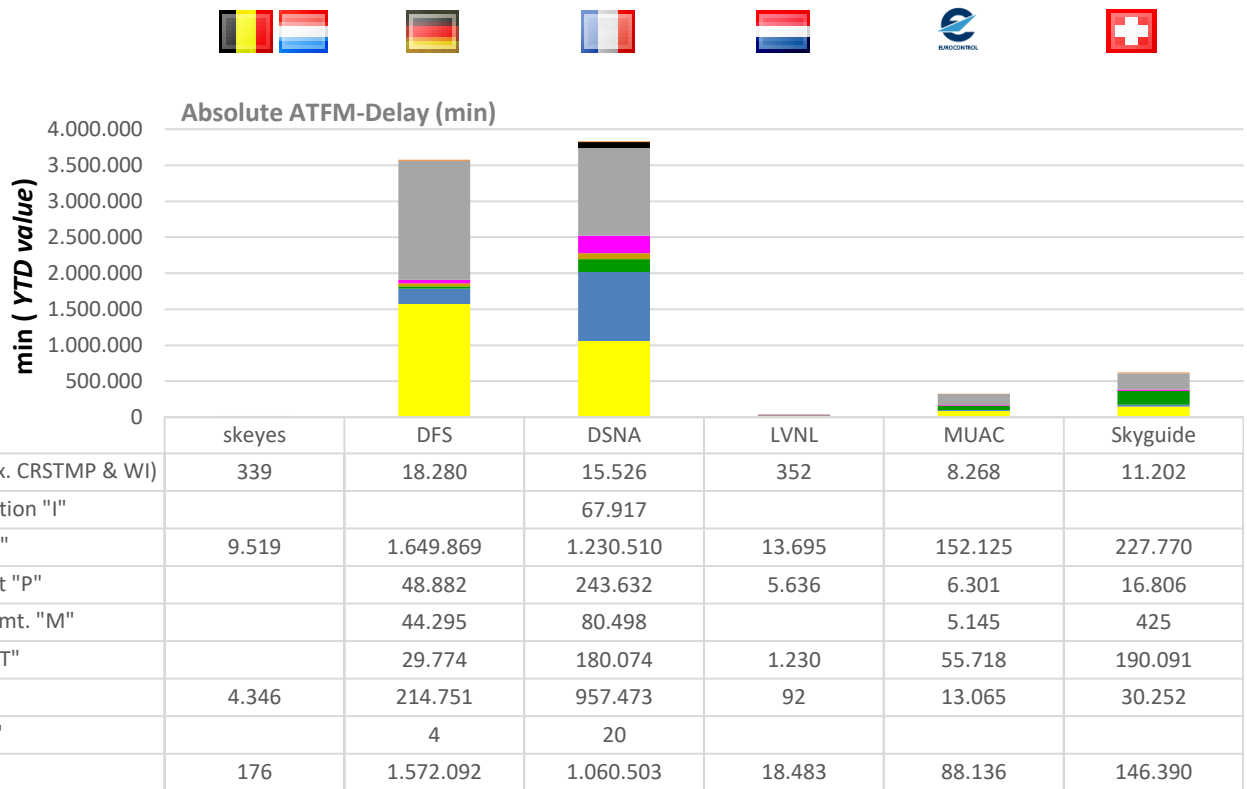
KPI #1: En-route ATFM delay per reason code (FABEC)



Delay due to reason code:	2023	2024
Capacity "C"	2.611.834	2.885.780
Routeing "R"	0	24
Staffing "S"	1.375.437	1.219.979
Equipment "T"	103.499	456.887
Airspace Mgmt. "M"	132.204	130.363
Special event "P"	831.361	321.257
Weather "W"	2.627.545	3.283.488
Industrial Action "I"	2.636.084	67.917
All others (ex. CRSTMP & WI)	162.469	53.967
CRSTMP:	5.054.335	5.014.290
TOTAL:	10.480.433	8.419.662

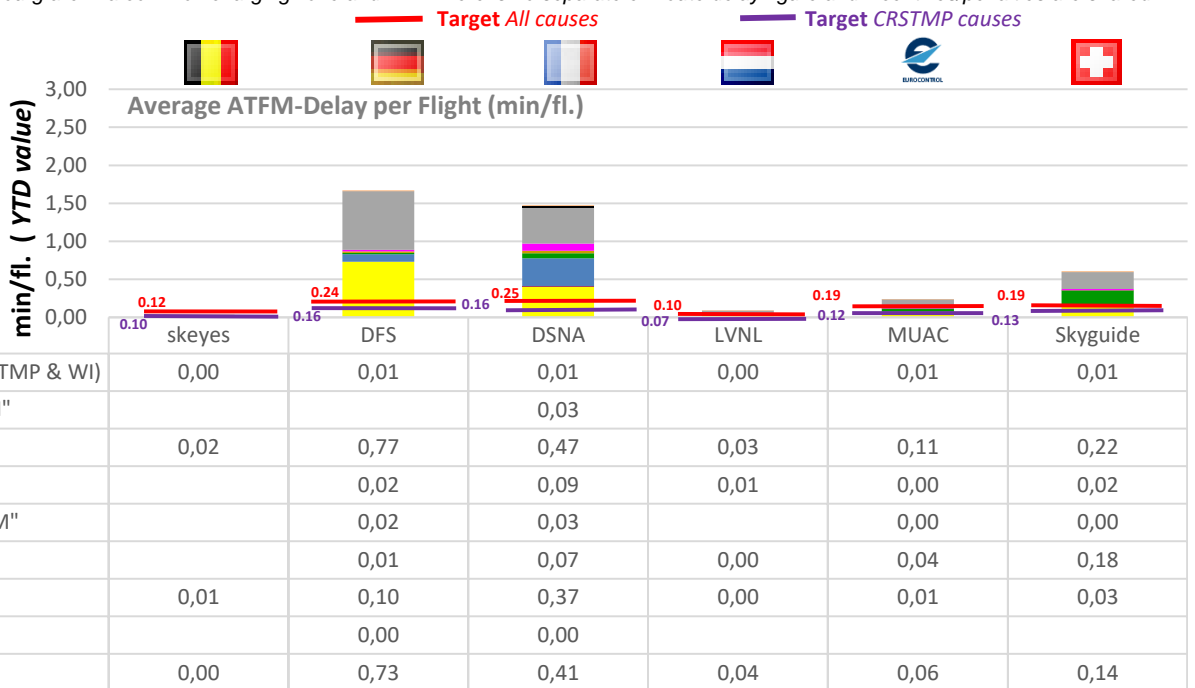


KPI #1: En-route ATFM delay per controlled flight (ANSP)



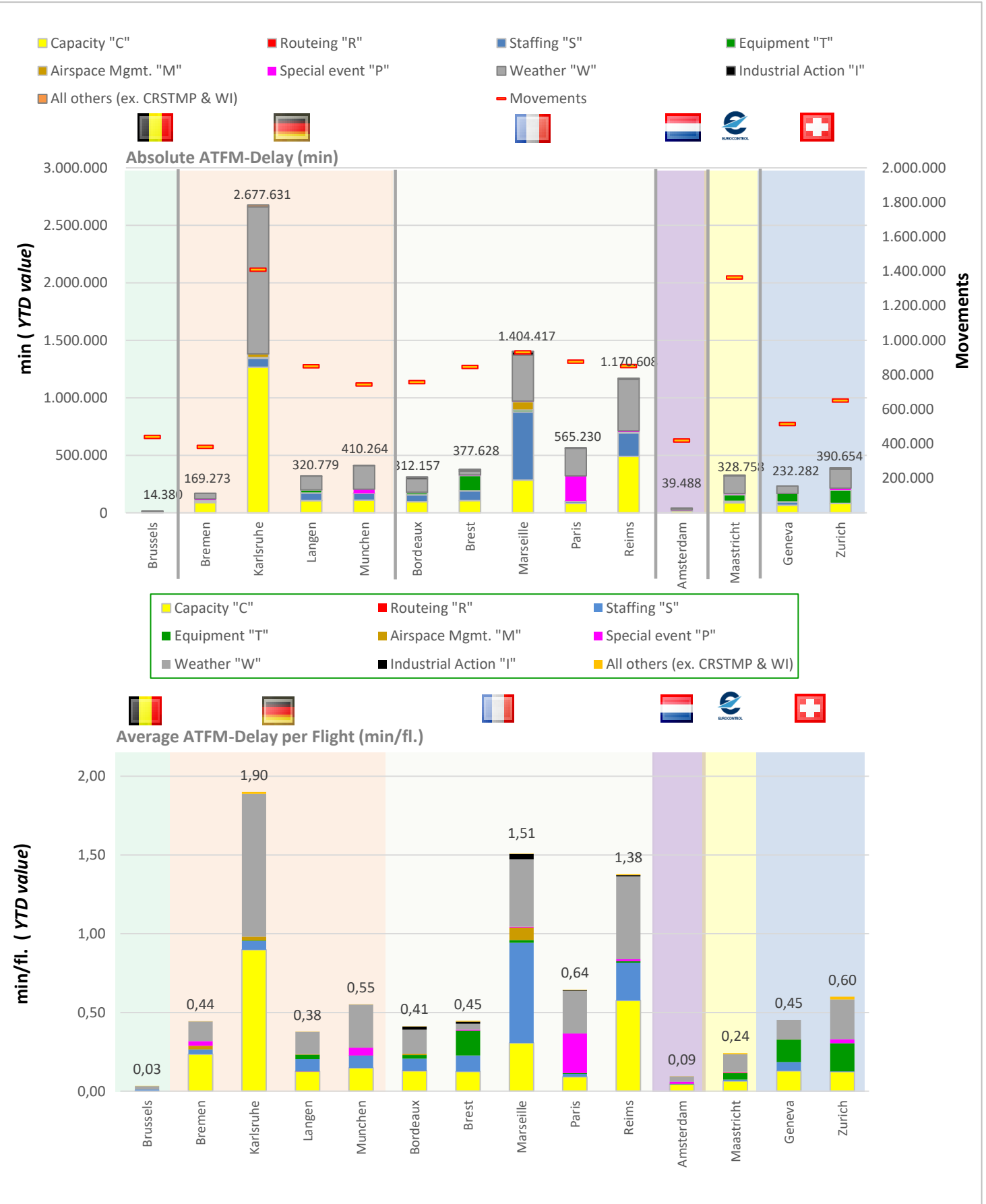
CRSTMP:	4.522	1.909.798	2.522.200	25.441	168.365	383.964
TOTAL:	14.380	3.577.947	3.836.153	39.488	328.758	622.936

*Belgium and Luxembourg are in a common charging zone and FIR. There is no separate en-route delay figure and incentives/penalties are shared.

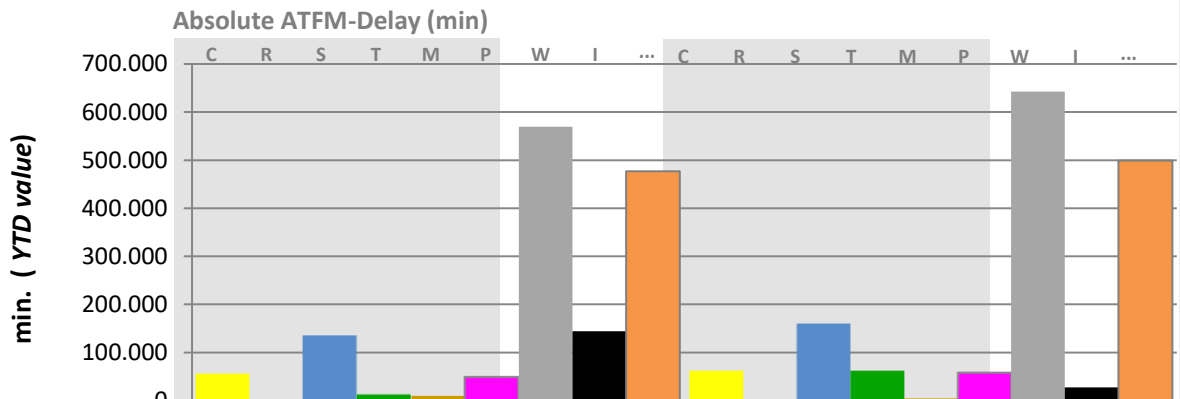


CRSTMP:	0,01	0,89	0,97	0,06	0,12	0,37
TOTAL:	0,03	1,67	1,47	0,09	0,24	0,61

KPI #1: En-route ATFM delay per controlled flight (ACC)



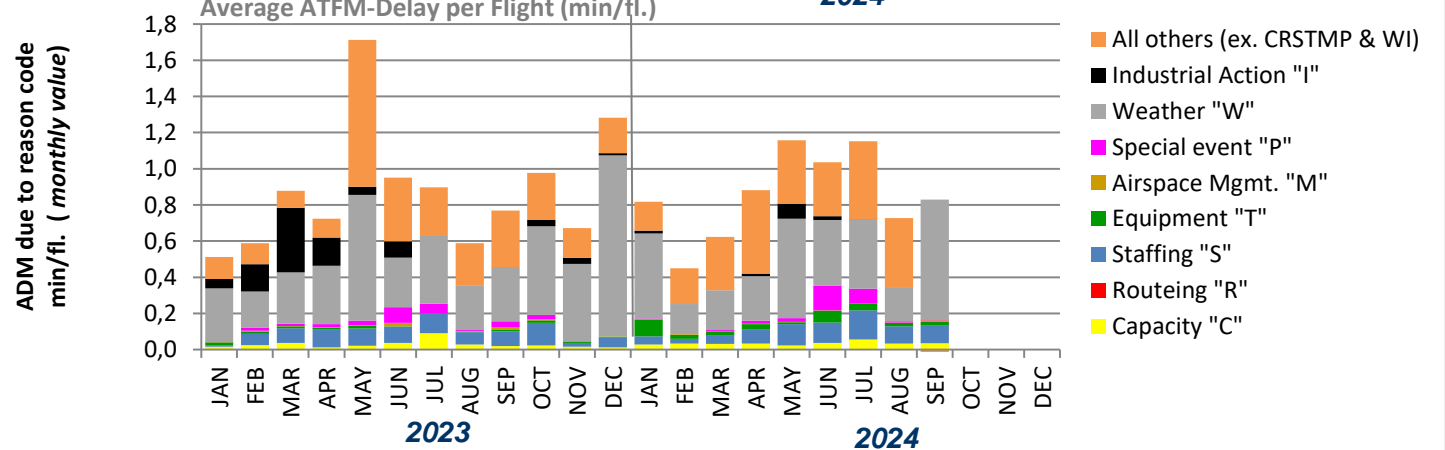
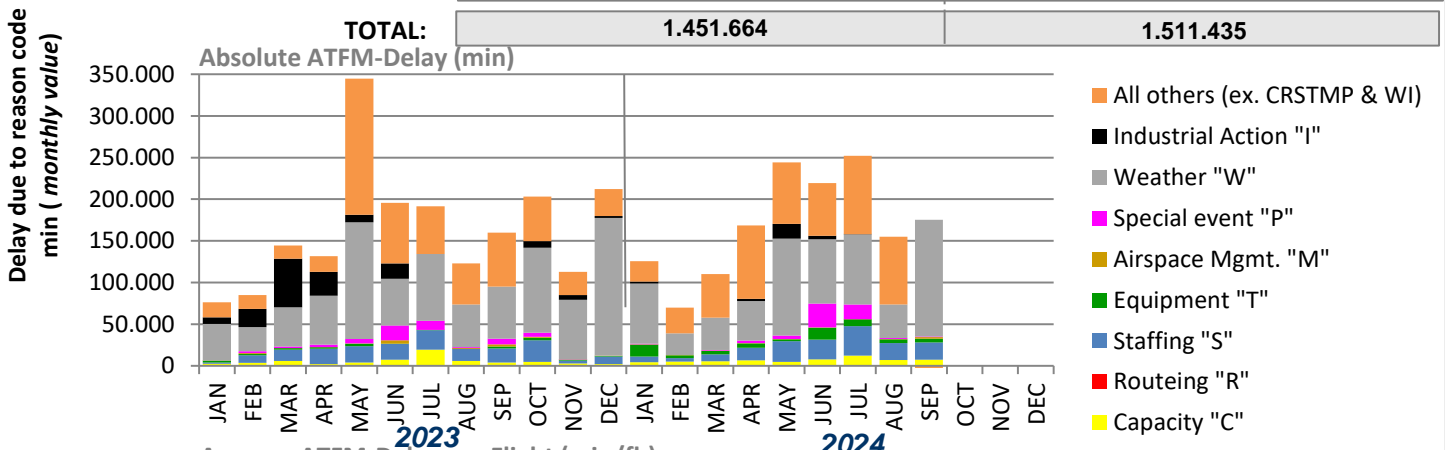
KPI #2: Arrival ATFM delay per reason code (FABEC)



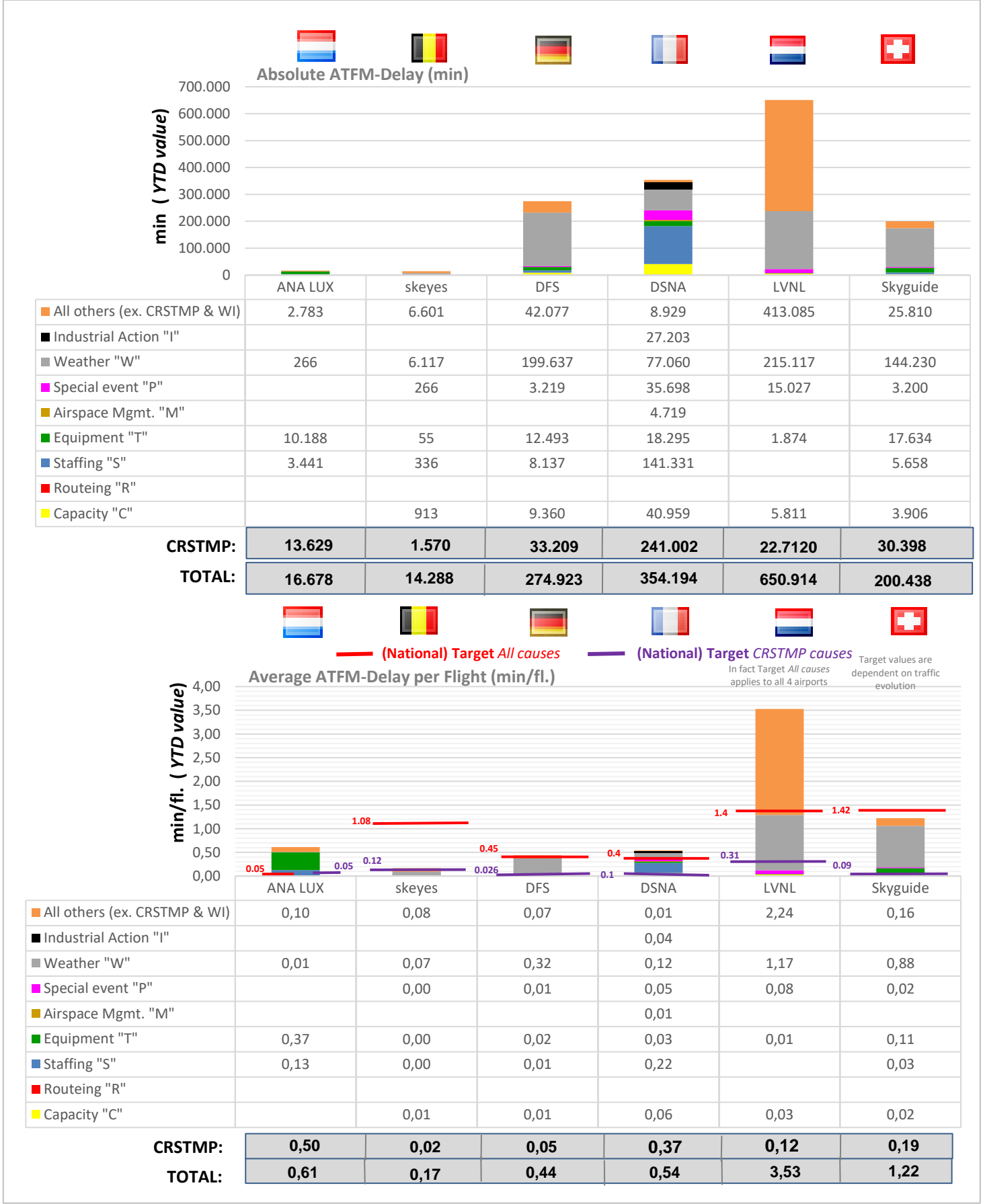
Delay due to reason code:

	2023	2024
Capacity "C"	54.519	60.949
Routing "R"	0	0
Staffing "S"	135.118	158.903
Equipment "T"	13.448	60.539
Airspace Mgmt. "M"	9.681	4.719
Special event "P"	48.698	57.410
Weather "W"	569.647	642.427
Industrial Action "I"	143.925	27.203
All others (ex. CRSTMP & WI)	476.628	499.285

CRSTMP:	261.464	342.520
TOTAL:	1.451.664	1.511.435



KPI #2: Arrival ATFM delay per controlled flight (ANSP)



FABEC Performance Report Capacity:

Editor: FABEC PMG

Sources: EUROCONTROL, FABEC ANSPs

Status: September 2024

www.FABEC.eu

Notice

The FABEC PMG has made every effort to ensure that the information and analysis contained in this document are as accurate and complete as possible.

Only information from quoted sources has been used and information relating to named parties has been checked with the parties concerned.

Despite these precautions, should you find any errors or inconsistencies we would be grateful if you could please bring them to the FABEC PMG's attention.